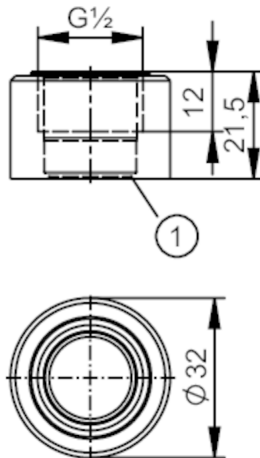


E30509



Welding adapter for process sensors

ADAPT G1/2-WELDING SLEEVE



1 sealing edge

Application	
Design	for pipes
Pressure rating	160 bar 5 MPa
Note on pressure rating	for the connection sensor - adapter professional welding according to operating instructions
Tests / approvals	
Pressure Equipment Directive	A possible classification to PED depends on the application and has to be carried out by the user / operator.
Safety instructions	The compatibility between medium and product material has to be checked in all applications.
Mechanical data	
Weight [g]	144.6
Materials (wetted parts)	stainless steel (316L/1.4435)
Sensor connection	G 1/2
Process connection	welding adapter Ø 32 mm
Remarks	
Pack quantity	1 pcs.