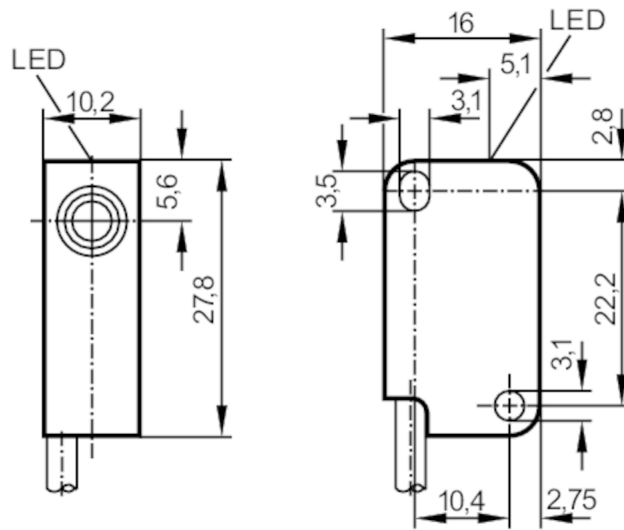


IS5088



Inductive sensor

IS-3002-BPKG/0,150M



Product characteristics

Electrical design		PNP
Output function		normally open
Sensing range	[mm]	2
Housing		rectangular
Dimensions	[mm]	27.8 x 10.2 x 16

Electrical data

Operating voltage	[V]	10...30 DC
Current consumption	[mA]	< 15
Protection class		III
Reverse polarity protection		yes

Outputs

Electrical design		PNP
Output function		normally open
Max. voltage drop switching output DC	[V]	2.5
Max. leakage current	[mA]	0.5
Permanent current rating of switching output DC	[mA]	200
Short-time current rating of switching output	[mA]	200
Switching frequency DC	[Hz]	800
Short-circuit protection		yes
Overload protection		yes

Detection zone

Sensing range	[mm]	2
Real sensing range Sr	[mm]	2 ± 10 %

IS5088



Inductive sensor

IS-3002-BPKG/0,150M

Operating distance	[mm]	0...1.62
Accuracy / deviations		
Correction factor		steel: 1 / stainless steel: 0.7 / brass: 0.4 / aluminium: 0.3 / copper: 0.2
Hysteresis	[% of Sr]	1...15
Switch point drift	[% of Sr]	-10...10
Operating conditions		
Ambient temperature	[°C]	-25...80
Protection		IP 67
Tests / approvals		
EMC	EN 61000-4-2 ESD	-- CD / 8 kV AD
	EN 61000-4-3 HF radiated	10 V/m
	EN 61000-4-4 Burst	2 kV
	EN 61000-4-5 Surge	0,5 kV
	EN 61000-4-6 HF conducted	10 V
	EN 55011 emission	class B
Vibration resistance	EN 60947-5-2	
Shock resistance	EN 60947-5-2	
MTTF	[years]	3044
Mechanical data		
Weight	[g]	11.8
Housing		rectangular
Mounting		flush mountable
Dimensions	[mm]	27.8 x 10.2 x 16
Materials		housing: PBT; cover: PBT
Tightening torque	[Nm]	< 0.5; (with washer)
Displays / operating elements		
Display	switching status	1 x LED, yellow
Remarks		
Pack quantity		1 pcs.

IS5088



Inductive sensor

IS-3002-BPKG/0,150M

Electrical connection

Cable: 0.15 m, PVC, Ø 3.5 mm; 3 x 0.14 mm²

Connection



Core colours :
BN = brown
BU = blue
BK = black