

# AI-TWIN 2X 0,5 - 8 WH - Ferrule



3200933

<https://www.phoenixcontact.com/gb/products/3200933>

Please be informed that the data shown in this PDF document is generated from our online catalog. Please find the complete data in the user documentation. Our general terms of use for downloads are valid.

Ferrule, Length contact range: 8 mm, sleeve length: 15 mm, color: white



## Your advantages

- These special ferrules allow chain bridges to be set up with ease
- The TWIN ferrules provide a practical way of crimping two conductors in one ferrule
- Different versions of the individual TWIN ferrules can be selected for specific applications

## Commercial data

Item number	3200933
Packing unit	100 pc
Minimum order quantity	100 pc
Sales key	BH3413
Product key	BH3413
GTIN	4017918094485
Weight per piece (including packing)	0.115 g
Weight per piece (excluding packing)	0.106 g
Customs tariff number	85369010
Country of origin	DE

# AI-TWIN 2X 0,5 - 8 WH - Ferrule

3200933

<https://www.phoenixcontact.com/gb/products/3200933>

## Technical data

### Product properties

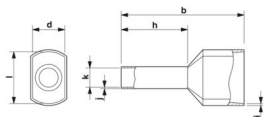
Product type	Cable end sleeve
Conductor category	stranded conductors, class 2, 5, 6 / B, C, K, M
Product property	UL certified
	Made from soft tin-plated electrolytic copper
	Correspond to the requirements of UL 486F
	Plastic collar made of polypropylene
	Halogen-free
	Long/short-term temperature: +105°C/+120°C

### Connection data

#### Conductor connection

Conductor cross section flexible max.	0.5 mm <sup>2</sup>
Conductor cross section AWG max.	20
Stripping length	11 mm

### Dimensions

Dimensional drawing	
Sleeve length	15 mm
Length contact range	8 mm
Ferrule diameter	1.5 mm
Sleeve wall thickness	0.15 mm
Insulating collar thickness	0.25 mm
Inner dimensions of the insulating collar	2.5 mm

### Material specifications

Color	white (RAL 9010)
Material	CU-DHP
Flammability rating according to UL 94	HB
Coating	galvanically tin-plated
Surface characteristics	Tin-plated
Components	free from silicone and halogen

### Mechanical properties

#### Technical data

Sleeve length	15 mm
---------------	-------

# AI-TWIN 2X 0,5 - 8 WH - Ferrule



3200933

<https://www.phoenixcontact.com/gb/products/3200933>

## Environmental and real-life conditions

### Ambient conditions

Permanent temperature	105 °C (-40 °C no load / 0 °C dynamic load)
Short-term temperature	120 °C

## Standards and regulations

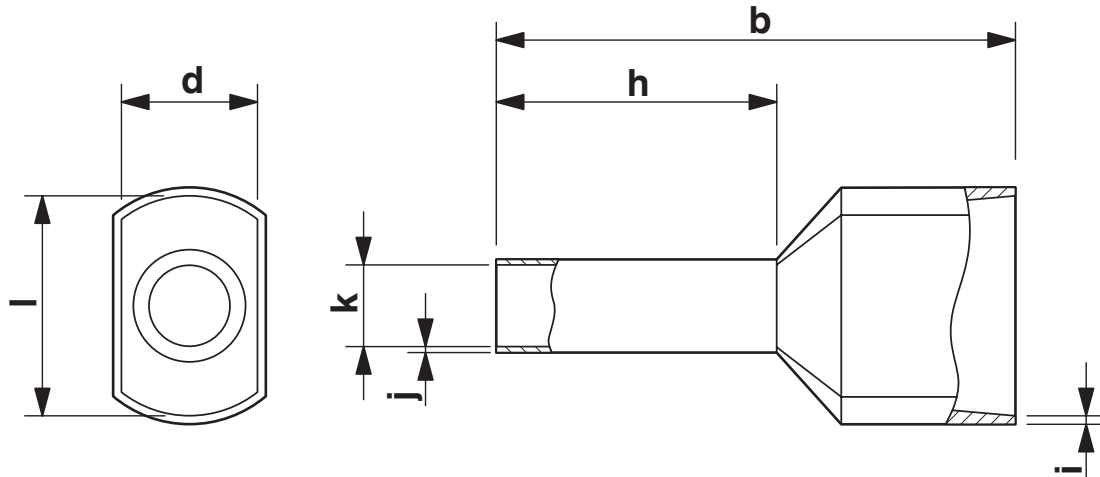
Design according to standard	DIN 46228-4, UL 486F-F
------------------------------	------------------------

3200933

<https://www.phoenixcontact.com/gb/products/3200933>

## Drawings

Dimensional drawing



Sleeve length (b), length contact range (h), insulating collar inner dimension (d), sleeve diameter (k), insulating collar thickness (i), sleeve wall thickness (j)

# AI-TWIN 2X 0,5 - 8 WH - Ferrule



3200933

<https://www.phoenixcontact.com/gb/products/3200933>

## Approvals

To download certificates, visit the product detail page: <https://www.phoenixcontact.com/gb/products/3200933>



**cULus Listed**

Approval ID: E488001

# AI-TWIN 2X 0,5 - 8 WH - Ferrule



3200933

<https://www.phoenixcontact.com/gb/products/3200933>

## Classifications

### ECLASS

ECLASS-13.0	27400201
ECLASS-15.0	27400201

### ETIM

ETIM 9.0	EC000005
----------	----------

### UNSPSC

UNSPSC 21.0	27121700
-------------	----------

# AI-TWIN 2X 0,5 - 8 WH - Ferrule



3200933

<https://www.phoenixcontact.com/gb/products/3200933>

## Environmental product compliance

### EU RoHS

Fulfills EU RoHS substance requirements	Yes, No exemptions
---	--------------------

### China RoHS

Environment friendly use period (EFUP)	EFUP-E
	No hazardous substances above the limits

### EU REACH SVHC

REACH candidate substance (CAS No.)	No substance above 0.1 wt%
-------------------------------------	----------------------------

Phoenix Contact 2025 © - all rights reserved  
<https://www.phoenixcontact.com>

PHOENIX CONTACT Ltd  
Halesfield 13, Telford  
Shropshire, TF7 4PG  
01952 681700  
[info@phoenixcontact.co.uk](mailto:info@phoenixcontact.co.uk)