

# FL SM PATCH COUPLER LC-LC - FO coupling

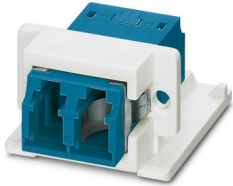


2700313

<https://www.phoenixcontact.com/gb/products/2700313>

Please be informed that the data shown in this PDF document is generated from our online catalog. Please find the complete data in the user documentation. Our general terms of use for downloads are valid.

Coupling, LC/LC, can be used for single mode glass fibers



## Commercial data

Item number	2700313
Packing unit	1 pc
Minimum order quantity	1 pc
Sales key	ABNIDA
Product key	ABNIDA
GTIN	4046356543019
Weight per piece (including packing)	15 g
Weight per piece (excluding packing)	15 g
Customs tariff number	85367000
Country of origin	BG

# FL SM PATCH COUPLER LC-LC - FO coupling



2700313

<https://www.phoenixcontact.com/gb/products/2700313>

## Technical data

### Product properties

Product type	Data plug
Application	FO coupling
Sensor type	Ethernet
Number of positions	2
Connection profile	LC-Duplex
Number of slots	1
Type	Socket

### Connection data

Connection method	Coupling
-------------------	----------

### Dimensions

#### Mechanical characteristics

Ferrule diameter	1.25 mm
------------------	---------

### Material specifications

Color	blue
Flammability rating according to UL 94	V0
Ferrule material	Zirconia ceramics
Housing material	PBT

### Cable/line

Cable type	Fiberglass
------------	------------

#### FO cable

Number of fibers	2
Fiber type	Single-mode fiberglass
Attenuation	≤ 0.2 dB

### Mechanical properties

#### Mechanical data

Insertion/withdrawal cycles	≥ 500
-----------------------------	-------

### Environmental and real-life conditions

#### Ambient conditions

Degree of protection	IP20
	IP20
Ambient temperature (operation)	-25 °C ... 70 °C
Ambient temperature (storage/transport)	-40 °C ... 85 °C
Ambient temperature (assembly)	-5 °C ... 50 °C

# FL SM PATCH COUPLER LC-LC - FO coupling

2700313

<https://www.phoenixcontact.com/gb/products/2700313>



Ambient temperature (installation)

-40 °C ... 85 °C

# FL SM PATCH COUPLER LC-LC - FO coupling



2700313

<https://www.phoenixcontact.com/gb/products/2700313>

## Classifications

### ETIM

ETIM 8.0	EC000752
----------	----------

### UNSPSC

UNSPSC 21.0	43223300
-------------	----------

# FL SM PATCH COUPLER LC-LC - FO coupling



2700313

<https://www.phoenixcontact.com/gb/products/2700313>

## Environmental product compliance

### EU RoHS

Fulfills EU RoHS substance requirements	Yes, No exemptions
---	--------------------

### China RoHS

Environment friendly use period (EFUP)	EFUP-E
	No hazardous substances above the limits

### EU REACH SVHC

REACH candidate substance (CAS No.)	No substance above 0.1 wt%
-------------------------------------	----------------------------

Phoenix Contact 2025 © - all rights reserved  
<https://www.phoenixcontact.com>

PHOENIX CONTACT Ltd  
Halesfield 13, Telford  
Shropshire, TF7 4PG  
01952 681700  
[info@phoenixcontact.co.uk](mailto:info@phoenixcontact.co.uk)