

adapter M12 plug, 8-pole, for M20/M25 cable entry, for plastic/metal enclosure



product brand name	SIRIUS ACT
product designation	Adapter
design of the product	M12 plug, 8-pole, for M20/M25 cable entry
product type designation	3SU1

**General technical data**

protection class IP	IP66, IP67, IP69(IP69K)
Substance Prohibittance (Date)	10/01/2014
Weight	13 g

**Connections/ Terminals**

wire length	0.5 m
-------------	-------

**Ambient conditions**

ambient temperature	
• during operation	-25 ... +70 °C
• during storage and transport	-40 ... +80 °C

**Environmental footprint**

Environmental Product Declaration(EPD)	Yes
global warming potential [CO2 eq] total	0.787 kg
global warming potential [CO2 eq] during manufacturing	0.566 kg
global warming potential [CO2 eq] during operation	0.235 kg
global warming potential [CO2 eq] after end of life	-0.015 kg

**Installation/ mounting/ dimensions**

height	38.8 mm
width	36 mm
mounting height	23.3 mm
installation depth	15.5 mm

**Accessories**

material of accessory	Plastic
color of accessory	black

**Approvals Certificates**

General Product Approval	Test Certificates	Maritime application
--------------------------	-------------------	----------------------



[Type Test Certificates/Test Report](#)



Maritime application	other	Environment
----------------------	-------	-------------



[Confirmation](#)



## Environment

[Environmental Confirmations](#)

## Further information

Information on the packaging

<https://support.industry.siemens.com/cs/ww/en/view/109813875>

Information- and Downloadcenter (Catalogs, Brochures,...)

<https://www.siemens.com/ic10>

Industry Mall (Online ordering system)

<https://mall.industry.siemens.com/mall/en/en/Catalog/product?mlfb=3SU1900-0JL10-0AA0>

Cax online generator

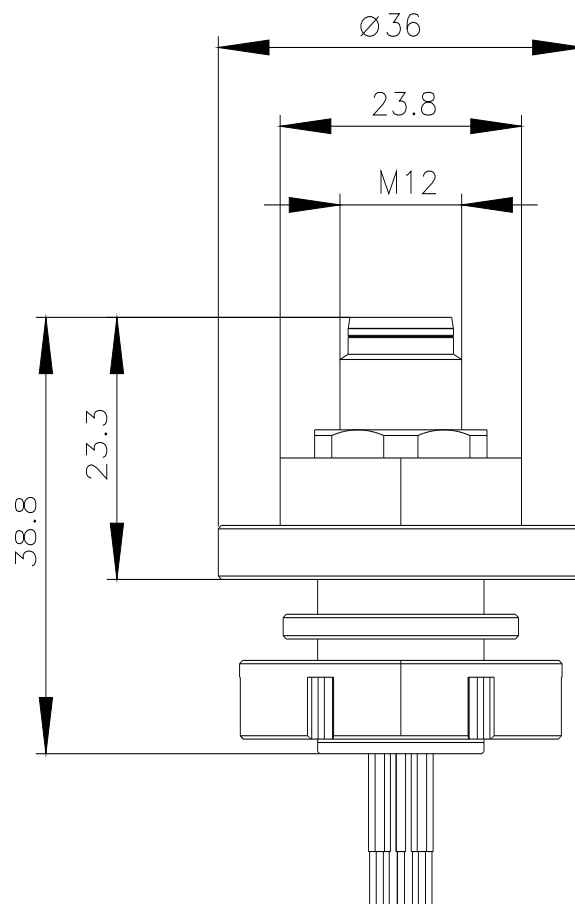
<http://support.automation.siemens.com/WW/CAXorder/default.aspx?lang=en&mlfb=3SU1900-0JL10-0AA0>

Service&Support (Manuals, Certificates, Characteristics, FAQs,...)

<https://support.industry.siemens.com/cs/ww/en/ps/3SU1900-0JL10-0AA0>

Image database (product images, 2D dimension drawings, 3D models, device circuit diagrams, EPLAN macros, ...)

[http://www.automation.siemens.com/bilddb/cax\\_de.aspx?mlfb=3SU1900-0JL10-0AA0&lang=en](http://www.automation.siemens.com/bilddb/cax_de.aspx?mlfb=3SU1900-0JL10-0AA0&lang=en)



last modified:

4/2/2025