



Fixed-mounted circuit breaker IEC 60947-2, frame size 1, 3-poles, $I_n=1250A$, breaking capacity E, up to 1000V AC 50/60Hz, $I_{cu}=85/50kA$ at 690/1000V, Trip unit ETU300 LSI optimized for standard applications, without display Protection LT, ST, INST, N-protection required an external N-sensor, incl. trip alarm switch (1xCO), rear connection vertical, without Com & metering function with manual and motorized operating mechanism (M) 208-240 V AC / 220-250 V DC, Storage status and ready-to-close signaling switches, Auxiliary switches 2NO+2NC, Closing coil (CC) 100% OP 208-240 V AC / 220-250 V DC, applicable for continuous duty, without Remote trip alarm reset coil (RR), Undervoltage release (UVR) instantaneous (0,08 s) and short-delay (0,2 s), 208-240 V AC / 220-250 V DC, Shunt trip (ST) 100% OP 208-240 V AC / 220-250 V DC, suitable for continuous duty, Option S07 = Locking provision against unauthorized closing Secured Open; for padlock device Padlocks are not included.

Model	
product brand name	SENTRON
suitability for use	circuit breaker
size of the circuit-breaker	I
number of poles	3
position / of neutral conductor	no internal N-conductor
fastening method	fixed-mounted circuit breakers
design of the product	AC application
type of the driving mechanism	manual operating mechanism/spring charging motor with spring charge signaling switch
design of the electronic trip unit	ETU300 LSI
Weight	52.156 kg
Net Weight	39.156 kg
General technical data	
insulation voltage / rated value	1000 V
operating voltage / at AC / at 50/60 Hz / rated value	1000 V
power loss [W] / maximum	105 W
Current	
continuous current / rated value / maximum	1250 A
continuous current / rated value	1250 A
operational current	
• at 40 °C / rated value	1250 A
• at 45 °C / rated value	1250 A
• at 50 °C / rated value	1250 A
• at 55 °C / rated value	1250 A
• at 60 °C / rated value	1250 A
• at 65 °C / rated value	1250 A
• at 70 °C / rated value	1250 A
Switching capacity and short-time withstand current, according to IEC 60947-2	
switching capacity class of the circuit breaker	E
maximum short-circuit current breaking capacity (I_{cu})	
• at 500 V / rated value	85 kA
• at 690 V / rated value	85 kA
• at 1000 V / rated value	50 kA
operating short-circuit current breaking capacity (I_{cs})	
• at 500 V / rated value	85 kA
• at 690 V / rated value	85 kA
• at 1000 V / rated value	50 kA
short-circuit current making capacity (I_{cm})	
• at 690 V / rated value	187 kA

<ul style="list-style-type: none"> at 1000 V / rated value 	105 kA
short-time withstand current (I _{cw}) / at 690 V AC	
<ul style="list-style-type: none"> for 0.5 s / rated value 	85 kA
<ul style="list-style-type: none"> for 1 s / rated value 	85 kA
<ul style="list-style-type: none"> for 2 s / rated value 	70 kA
<ul style="list-style-type: none"> for 3 s / rated value 	60 kA
short-time withstand current (I _{cw}) / at 1000 V AC	
<ul style="list-style-type: none"> for 0.5 s / rated value 	50 kA
<ul style="list-style-type: none"> for 1 s / rated value 	50 kA
<ul style="list-style-type: none"> for 2 s / rated value 	50 kA
<ul style="list-style-type: none"> for 3 s / rated value 	50 kA

Electronic release unit

product feature	
<ul style="list-style-type: none"> upgradable 	No
<ul style="list-style-type: none"> Bluetooth and USB interface 	No
<ul style="list-style-type: none"> decoder for basic protection functions 	Yes
<ul style="list-style-type: none"> display and function keys 	No
<ul style="list-style-type: none"> SENTRON powerconfig configuration software 	No

Basic protection functions

product feature / for L-tripping	
<ul style="list-style-type: none"> can be switched on/off 	No
<ul style="list-style-type: none"> selectable characteristic function 	No
<ul style="list-style-type: none"> decoder and infinite adjustability are selectable with eSet 	No
set values setting current (I _r) / for L-tripping / with I2t characteristic	0.4;0.5;0.6;0.7;0.75;0.8;0.85;0.9;0.95;1.0
reference value setting current (I _r) / for L-tripping / with I2t characteristic	x I _n
set values delay time (t _r) / for L-tripping / with I2t characteristic	0.75;1;2;5;8;10;14;17;21;25
reference value delay time (t _r) / for L-tripping / with I2t characteristic	s
L: Overload protection N-conductor	
product feature / with neutral conductor protection / can be switched on/off	No
setting values setting current (I _{nN}) / for N-tripping	1
reference value setting current (I _{nN}) / for N-tripping	x I _n
S: delayed short-circuit protection ST	
product feature / for S-tripping	
<ul style="list-style-type: none"> independent of direction / can be switched on/off 	Yes
<ul style="list-style-type: none"> independent of direction / selectable characteristic function 	Yes
<ul style="list-style-type: none"> decoder and infinite adjustability are selectable with eSet 	No
S: delayed short-circuit protection ST, settings values I0t	
set values setting current (I _{sd}) / for S-tripping / with I0t characteristic	1.5;2;2.5;3;4;5;6;8;10
reference value setting current (I _{sd}) / for S-tripping / with I0t characteristic	x I _r
set values delay time (t _{sd}) / for S-tripping / with I0t characteristic	0.08;0.15;0.22;0.3;0.4
reference value delay time (t _{sd}) / for S-tripping / with I0t characteristic	s
S: delayed short-circuit protection ST, settings values I2t	
set values setting current (I _{sd}) / for S-tripping / with I2t characteristic	1.5;2;2.5;3;4;5;6;8;10
reference value setting current (I _{sd}) / for S-tripping / with I2t characteristic	x I _r
set values delay time (t _{sd}) / for S-tripping / with I2t characteristic	0.08;0.15;0.22;0.3;0.4
product feature / for I-tripping	
<ul style="list-style-type: none"> can be switched on/off 	No
<ul style="list-style-type: none"> decoder and infinite adjustability are selectable (with eSet) 	No
set values setting current (I _i) / for I-tripping	1.5;2;3;4;5;6;8;10;12;15
reference value setting current (I _i) / for I-tripping	x I _n
G: ground fault GF	
product feature / for G-tripping	
<ul style="list-style-type: none"> can be switched on/off 	No

• selectable characteristic function	No	
Further protective functions		
protection function		
• maintenance mode DAS+	Yes	
Measuring functions		
measurement function		
• current measurement	Yes	
Communication		
communication function	No	
Service Life		
mechanical service life (operating cycles)		
• without support / typical	10000	
• with support / typical	15000	
electrical endurance (operating cycles)		
• at 690 V / without support / typical	10000	
• at 690 V / with support / typical	15000	
• at 1000 V / without support / typical	1000	
Dimensions		
height	462 mm	
width	320 mm	
depth	357 mm	
Main connection		
arrangement of electrical connectors / for main current circuit	main connection on the rear, vertical	
Auxiliary circuit		
design of the auxiliary switch	2 NO + 2 NC	
number of NC contacts / for auxiliary contacts	2	
number of NO contacts / for auxiliary contacts	2	
number of CO contacts / for auxiliary contacts	0	
Internal accessories		
product component		
• undervoltage release	Yes	
• voltage trigger	Yes	
• trip indicator	Yes	
• motor drive	Yes	
Environmental conditions		
protection class IP / on the front	IP20	
ambient temperature / during operation		
• minimum	-40 °C	
• maximum	70 °C	
ambient temperature / during storage		
• minimum	-40 °C	
• maximum	80 °C	
Certificates		
reference code		
• according to IEC 81346-2	Q	
General Product Approval	EMV	Radio Equipment Type Approval Certificate



[Miscellaneous](#)

Test Certificates

Maritime application

other

[Special Test Certificate](#)

[Miscellaneous](#)



[Confirmation](#)

other

Dangerous goods

Environment



[Manufacturer Declaration](#)

[Transport Information](#)



Siemens
EcoTech



Further information

Information on the packaging

<https://support.industry.siemens.com/cs/ww/en/view/109813875>

Industry Mall (Online ordering system)

<https://mall.industry.siemens.com/mall/en/en/Catalog/product?mlfb=3WA1112-8AB01-4EQ4-Z S07>

Service&Support (Manuals, Certificates, Characteristics, FAQs,...)

<https://support.industry.siemens.com/cs/ww/en/ps/3WA1112-8AB01-4EQ4-Z S07>

Image database (product images, 2D dimension drawings, 3D models, device circuit diagrams, ...)

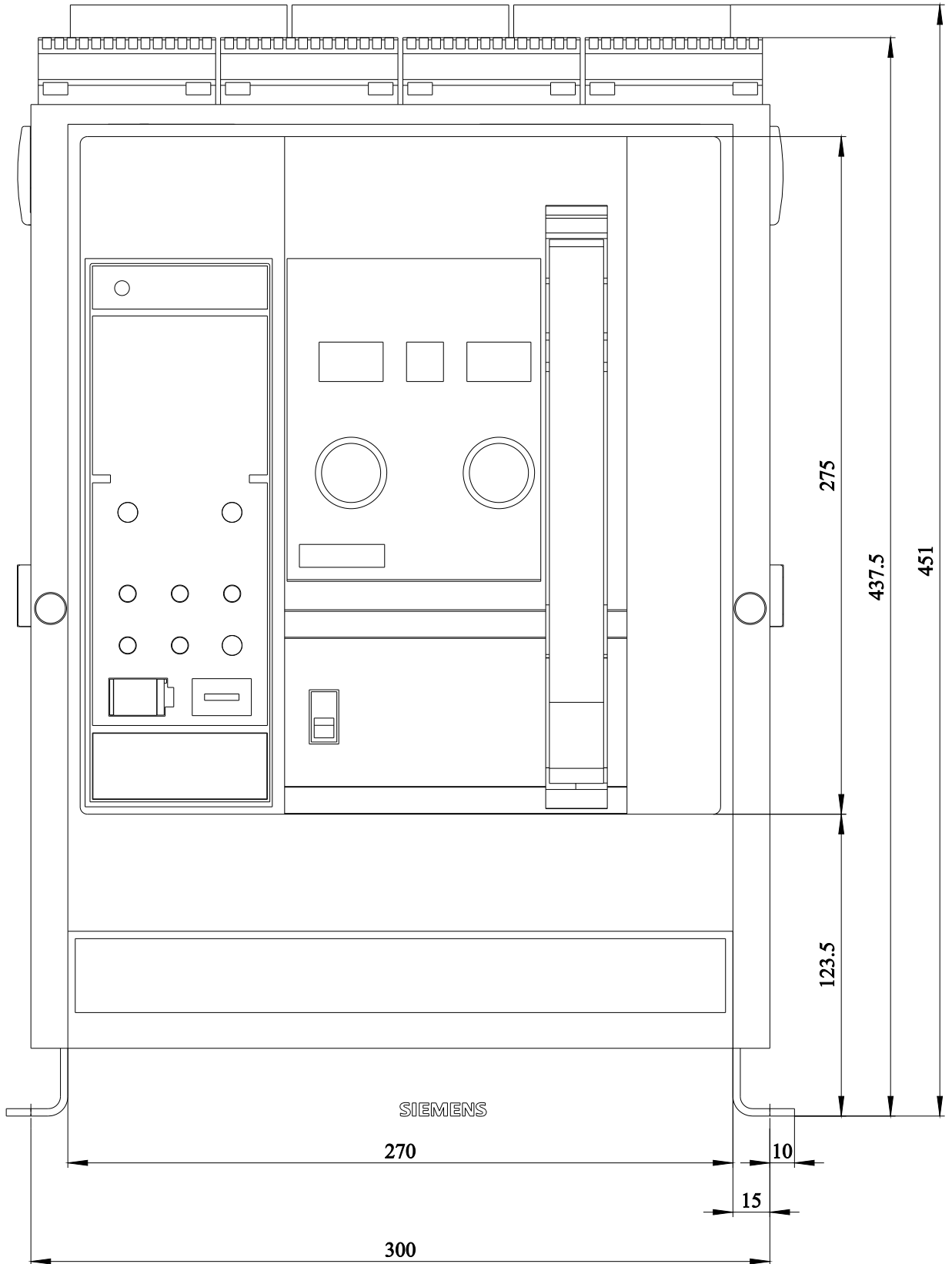
http://www.automation.siemens.com/bilddb/cax_en.aspx?mlfb=3WA1112-8AB01-4EQ4-Z S07

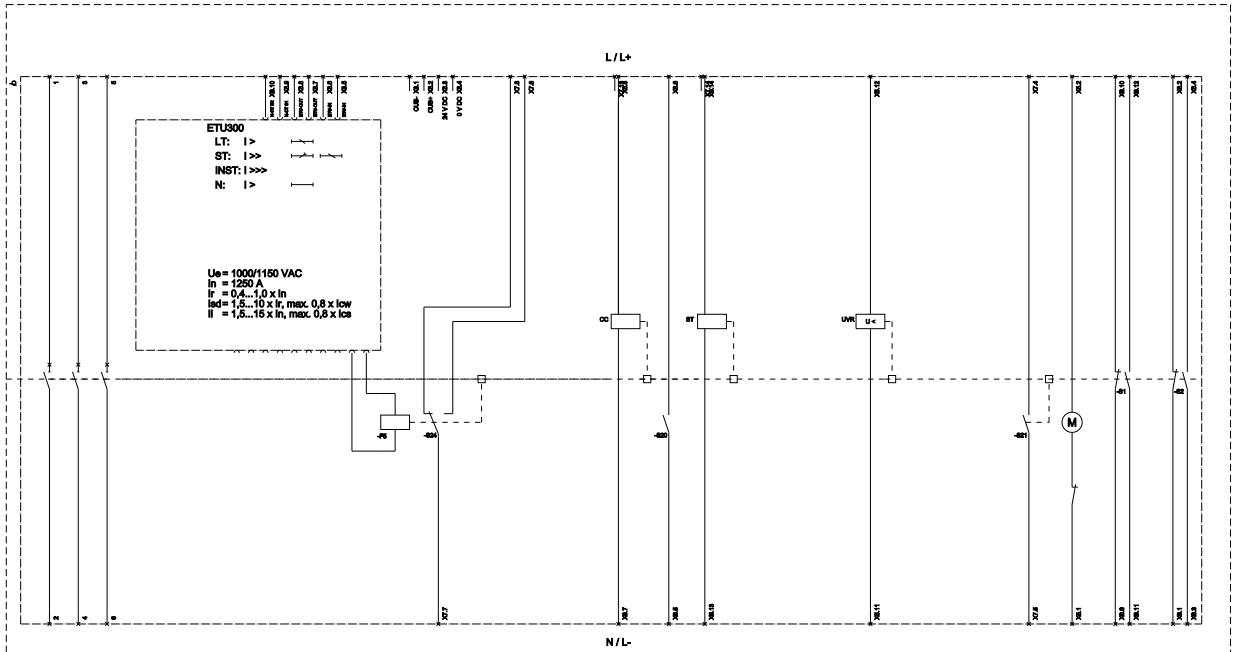
CAX-Online-Generator

<http://www.siemens.com/cax>

Information- and Downloadcenter (catalogues, leaflets,...)

<http://www.siemens.com/energy-automation>





12 (Circuit Breaker) 13 (Circuit Breaker) 14 (Circuit Breaker) 15 (Circuit Breaker) 16 (Circuit Breaker) 17 (Circuit Breaker) 18 (Circuit Breaker) 19 (Circuit Breaker) 20 (Circuit Breaker) 21 (Circuit Breaker) 22 (Circuit Breaker) 23 (Circuit Breaker) 24 (Circuit Breaker) 25 (Circuit Breaker) 26 (Circuit Breaker) 27 (Circuit Breaker) 28 (Circuit Breaker) 29 (Circuit Breaker) 30 (Circuit Breaker) 31 (Circuit Breaker) 32 (Circuit Breaker) 33 (Circuit Breaker) 34 (Circuit Breaker) 35 (Circuit Breaker) 36 (Circuit Breaker) 37 (Circuit Breaker) 38 (Circuit Breaker) 39 (Circuit Breaker) 40 (Circuit Breaker) 41 (Circuit Breaker) 42 (Circuit Breaker) 43 (Circuit Breaker) 44 (Circuit Breaker) 45 (Circuit Breaker) 46 (Circuit Breaker) 47 (Circuit Breaker) 48 (Circuit Breaker) 49 (Circuit Breaker) 50 (Circuit Breaker) 51 (Circuit Breaker) 52 (Circuit Breaker) 53 (Circuit Breaker) 54 (Circuit Breaker) 55 (Circuit Breaker) 56 (Circuit Breaker) 57 (Circuit Breaker) 58 (Circuit Breaker) 59 (Circuit Breaker) 60 (Circuit Breaker) 61 (Circuit Breaker) 62 (Circuit Breaker) 63 (Circuit Breaker) 64 (Circuit Breaker) 65 (Circuit Breaker) 66 (Circuit Breaker) 67 (Circuit Breaker) 68 (Circuit Breaker) 69 (Circuit Breaker) 70 (Circuit Breaker) 71 (Circuit Breaker) 72 (Circuit Breaker) 73 (Circuit Breaker) 74 (Circuit Breaker) 75 (Circuit Breaker) 76 (Circuit Breaker) 77 (Circuit Breaker) 78 (Circuit Breaker) 79 (Circuit Breaker) 80 (Circuit Breaker) 81 (Circuit Breaker) 82 (Circuit Breaker) 83 (Circuit Breaker) 84 (Circuit Breaker) 85 (Circuit Breaker) 86 (Circuit Breaker) 87 (Circuit Breaker) 88 (Circuit Breaker) 89 (Circuit Breaker) 90 (Circuit Breaker) 91 (Circuit Breaker) 92 (Circuit Breaker) 93 (Circuit Breaker) 94 (Circuit Breaker) 95 (Circuit Breaker) 96 (Circuit Breaker) 97 (Circuit Breaker) 98 (Circuit Breaker) 99 (Circuit Breaker) 100 (Circuit Breaker)

last modified:

7/4/2023

