

Data sheet for SIMOTICS S-1FG1

Article No. : 1FG1504-5UE23-2HK1-Z
D12+K11

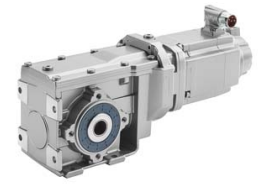


Figure similar

Client order no. :
Order no. :
Offer no. :
Remarks :

Item no. :
Consignment no. :
Project :

Gearbox data

Gear box type	K39
Gearbox basic type	Bevel geared B / K
Gearbox size	39
Transmission stages	3
Transmission (ratio)	15.41
Gear number relation	2835/184
Output moment maximum (short-time)	230 Nm
max. input speed (briefly)	4,500 rpm
Output speed short-time	292 rpm
Emergency off output moment (1000 cycles)	370 Nm
Radial force maximum	3,560 N
Max. permissible radial force with Mmax	3,470 N
Moment of inertia	0.67 kgcm ²
Torsional stiffness	23 Nm/°
Efficiency	0.94
Mounting position	M2-A
Mounting type	Housing flange (C type)
Output shaft version	Hollow shaft standard
Output shaft dimension	H30 mm
Gearbox flange diameter	-/-
Output shaft bearing	No
Figure 2 torque support	-

General tech. specifications

Color of the housing	Standard painting (Anthracite RAL 7016)
Specification	CE / UL / CSA / EAC / cRUus
Net weight	21.35 kg
1 m-sound pressure level L _{pA} (Tol.+3dB(A))	70
Plug position	top (default) (2)
Adapter flange position	top (default) (2)

Lubrication and sealing

Gear oil	Synthetic oil CLPH1 VG460
Output shaft sealing	Standard
Oil charge	0.90 l

Motor data

Motor type	Permanent-magnet synchronous motor
Motor type	Compact
DC-link voltage, max.	510...720V
Shaft height	63 mm
Cooling	Natural cooling
Rated speed	3,000 rpm
Rated torque (100K)	5.40 Nm
Rated power	1.70 kW
Rated current (100K)	3.70 A
Static torque	7.50 Nm
Static current	4.85 A
Moment of inertia	11.20 kgcm ²
Efficiency η	91 %
Temperature monitoring	Pt1000 temperature sensor
Connector size	1
Degree of protection	IP65
Encoder system	Resolver R15DQ: resolver 15 bits (resolution 32768, internal multi-pole)

Limiting data

Maximum speed (short-time)	7,200 rpm
Maximum torque	26.00 Nm
Motor current short term	19.2 A

Optimum operating point

Optimum speed	3,000 rpm
Optimum power	1.69 kW

Data sheet for SIMOTICS S-1FG1

Article No. : 1FG1504-5UE23-2HK1-Z
D12+K11

Recommended Motor Module

Rated inverter current	5.0 A
Maximum inverter current	15.0 A
Maximum torque	22.1 Nm

Standards

Compliance with standards	CE / UL / CSA / EAC / cRUus
CE marking	EN 60034

Options

D12	M2-A for bevel and worm gearboxes
K11	Food-grade oil CLP ISO H1 VG460

Info servo geared motor

Outside the standard temperature range of -10 to +40 °C, further selectable options must be observed, in addition to the lubricant selection.

Further, you have to check the suitability of the components and options used for the requested temperature range.