

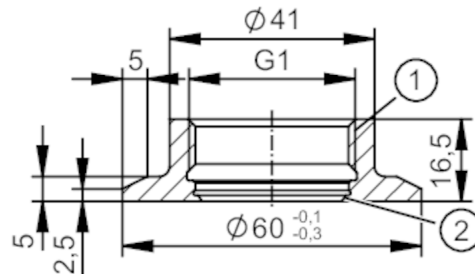
# E30150



## Welding adapter for process sensors

WELDING ADAPT D60/G1

recommended for wall thickness  $\leq 3$  mm. There are more suitable welding adapters for thicker walls.



- 1 G1 internal thread Aseptoflex Vario
- 2 sealing area

EC 1935/2004 FCM 

Application	
Installation	recommended for wall thickness $\leq 3$ mm
Pressure rating [bar]	25
Note on pressure rating	for the connection sensor - adapter
Tests / approvals	
Pressure Equipment Directive	A possible classification to PED depends on the application and has to be carried out by the user / operator.
Safety instructions	The compatibility between medium and product material has to be checked in all applications.
Mechanical data	
Weight [g]	118.6
Materials (wetted parts)	stainless steel (316L/1.4435) surface characteristics: $R_a < 0,4 \mu\text{m}$ / $R_z = 4 \mu\text{m}$
Sensor connection	G 1 internal thread Aseptoflex Vario
Process connection	welding adapter $\varnothing 60$ mm
Sealing	Gasket
Accessories	
Items supplied	O-ring: 1 x (24 x 2 mm), EPDM, FDA compliant, E30054
Accessories (optional)	O-ring: 1 x 24 x 2, FKM, FDA compliant, E30123
	Welding mandrel, E30452
	welding mandrel, water-cooled, E30532
	leak test, E30530
	grinding protection, E30160
Remarks	
Notes	recommended for wall thickness $\leq 3$ mm. There are more suitable welding adapters for thicker walls.
Pack quantity	1 pcs.