

ATTB 6 PE

Weidmüller Interface GmbH & Co. KG
Klingenbergstraße 26
D-32758 Detmold
Germany

www.weidmueller.com



Current and voltage transformer wiring

Our test disconnect terminal blocks featuring spring and screw connection technology allow you to create all the important converter circuits for measuring current, voltage and power in a safe and sophisticated way.

General ordering data

Version	PE terminal, PUSH IN, 6 mm ² , Green/yellow
Order No.	2710080000
Type	ATTB 6 PE
GTIN (EAN)	4050118808100
Qty.	50 ST

ATTB 6 PE

Weidmüller Interface GmbH & Co. KG

Klingenbergstraße 26

D-32758 Detmold

Germany

www.weidmueller.com

Technical data

Approvals

Approvals



ROHS Conform

UL File Number Search [UL Website](#)

Certificate No. (cURus) E60693

Dimensions and weights

Depth	68 mm	Depth (inches)	2.6772 inch
Height	100 mm	Height (inches)	3.937 inch
Width	8.1 mm	Width (inches)	0.3189 inch
Net weight	30.35 g		

Temperatures

Storage temperature	-25 °C...55 °C	Continuous operating temp., min.	-60 °C
Continuous operating temp., max.	130 °C		

Environmental Product Compliance

RoHS Compliance Status	Compliant without exemption
REACH SVHC	No SVHC above 0.1 wt%

Material data

Material	Wemid	Colour	Green/yellow
Colour of operational elements	orange	UL 94 flammability rating	V-0

System specifications

End cover plate required	Yes	Number of potentials	1
Number of levels	1	Number of clamping points per level	2
Number of potentials per tier	1	PE connection	Yes
Rail	TS 35	N-function	No
PE function	Yes	PEN function	No

Additional technical data

Open sides	right	Snap-on	Yes
Explosion-tested version	No	Type of mounting	Snap-on

CSA rating data

Wire cross section max. (CSA)	8 AWG	Certificate No. (CSA)	200039-80099474
Wire cross section min. (CSA)	22 AWG		

Conductors for clamping (additional connection)

Connection type, additional connection PUSH IN

ATTB 6 PE

Weidmüller Interface GmbH & Co. KG
 Klingenbergstraße 26
 D-32758 Detmold
 Germany

www.weidmueller.com

Technical data

Conductors for clamping (rated connection)

Gauge to IEC 60947-1	A5	Wire connection cross section AWG, max.	AWG 8
Connection direction	top	Stripping length	12 mm
Type of connection	PUSH IN	Number of connections	2
Clamping range, max.	10 mm ²	Clamping range, min.	0.5 mm ²
Blade size	0.8 x 4.0 mm	Wire connection cross section AWG, min.	AWG 22
Wire connection cross-section, finely stranded with wire-end ferrules DIN 46228/4, max.	6 mm ²	Wire connection cross-section, finely stranded with wire-end ferrules DIN 46228/4, min.	0.5 mm ²
Wire connection cross-section, finely stranded with wire-end ferrules DIN 46228/1, max.	10 mm ²	Wire connection cross-section, finely stranded with wire-end ferrules DIN 46228/1, min.	0.5 mm ²
Wire connection cross section, finely stranded, max.	10 mm ²	Wire connection cross section, finely stranded, min.	0.5 mm ²
Connection cross-section, stranded, max.	6 mm ²	Connection cross-section, stranded, min.	0.5 mm ²
Wire connection cross-section, solid core, max.	6 mm ²	Wire connection cross-section, solid core, min.	0.5 mm ²

General

Wire connection cross section AWG, max.	AWG 8	Wire connection cross section AWG, min.	AWG 22
Standards	IEC 60947-7-2	Rail	TS 35

Rating data

Rated cross-section	6 mm ²	Rated voltage to adjoining terminal	500 V
Rated DC voltage	500 V	Standards	IEC 60947-7-2
Volume resistance according to IEC 60947-7-x	0.78 mΩ	Rated impulse withstand voltage to adjacent terminal	6 kV
Surge voltage category	III	Pollution severity	3

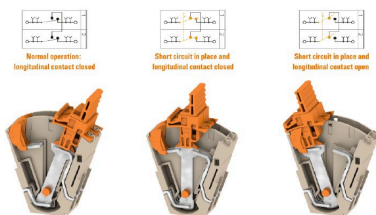
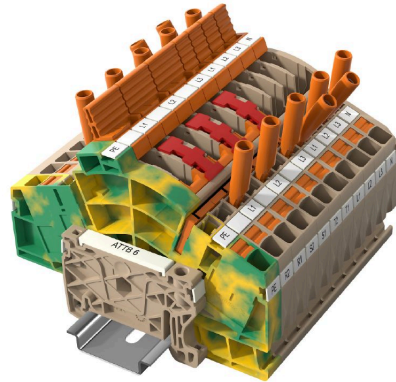
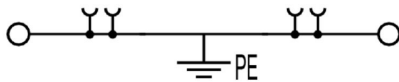
UL rating data

Conductor size Factory wiring max. (cURus)	8 AWG	Certificate No. (cURus)	E60693
Conductor size Field wiring min. (cURus)	22 AWG	Conductor size Factory wiring min. (cURus)	22 AWG
Conductor size Field wiring max. (cURus)	8 AWG		

Classifications

ETIM 6.0	EC000901	ETIM 7.0	EC000901
ETIM 8.0	EC000901	ETIM 9.0	EC000901
ETIM 10.0	EC000901	ECLASS 9.0	27-14-11-41
ECLASS 9.1	27-14-11-41	ECLASS 10.0	27-14-11-41
ECLASS 11.0	27-14-11-41	ECLASS 12.0	27-14-11-41
ECLASS 13.0	27-25-01-03	ECLASS 14.0	27-25-01-03
ECLASS 15.0	27-25-01-03		

Drawings



ATTB 6 PE

Weidmüller Interface GmbH & Co. KG
 Klingenbergstraße 26
 D-32758 Detmold
 Germany

Accessories

www.weidmueller.com

Test sockets



The test socket is used to connect test devices with a standard 4.0 plug with widths up to 10 mm into the terminal. Test sockets are arranged at an angle, therefore all standard measurements (even adjoining) can be realised within the terminal width of 8.1 mm. Once mounted, the test socket cannot be removed from the application.

General ordering data

Type	TS TTB 6 BK	Version
Order No.	2710520000	Socket (terminal), Plug-in depth: 11.5 mm, Depth: 51.3 mm
GTIN (EAN)	4050118881080	
Qty.	48 ST	
Type	TS TTB 6 BL	Version
Order No.	2710480000	Socket (terminal), Plug-in depth: 11.5 mm, Depth: 51.3 mm
GTIN (EAN)	4050118880656	
Qty.	48 ST	
Type	TS TTB 6 BR	Version
Order No.	2715540000	Socket (terminal), Plug-in depth: 11.5 mm, Depth: 51.3 mm
GTIN (EAN)	4050118769609	
Qty.	48 ST	
Type	TS TTB 6 GN	Version
Order No.	2710490000	Socket (terminal), Plug-in depth: 11.5 mm, Depth: 51.3 mm
GTIN (EAN)	4050118880953	
Qty.	48 ST	
Type	TS TTB 6 OR	Version
Order No.	2710470000	Socket (terminal), Plug-in depth: 11.5 mm, Depth: 51.3 mm
GTIN (EAN)	4050118880649	
Qty.	48 ST	
Type	TS TTB 6 RD	Version
Order No.	2710510000	Socket (terminal), Plug-in depth: 11.5 mm, Depth: 51.3 mm
GTIN (EAN)	4050118881073	
Qty.	48 ST	
Type	TS TTB 6 VT	Version
Order No.	2710530000	Socket (terminal), Plug-in depth: 11.5 mm, 0.00 mm, Depth: 51.3 mm
GTIN (EAN)	4050118881097	
Qty.	48 ST	
Type	TS TTB 6 WT	Version
Order No.	2817250000	Socket (terminal), Plug-in depth: 11.5 mm, Depth: 51.3 mm
GTIN (EAN)	4064675322566	
Qty.	48 ST	
Type	TS TTB 6 YL	Version
Order No.	2710500000	Socket (terminal), Plug-in depth: 11.5 mm, Depth: 51.3 mm
GTIN (EAN)	4050118881066	
Qty.	48 ST	

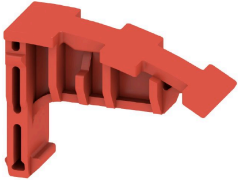
ATTB 6 PE

Weidmüller Interface GmbH & Co. KG
 Klingenbergstraße 26
 D-32758 Detmold
 Germany

www.weidmueller.com

Accessories

Switch lock



The switch lock can be easily inserted into the terminal from above. The switch lock prevents unauthorised opening or closing of circuits as it blocks the disconnect lever in its respective position.

General ordering data

Type	SL TTB 6	Version	
Order No.	2710220000	Lockout device (terminal), PA 66/6, red	
GTIN (EAN)	4050118893311		
Qty.	50 ST		

Lever Link



Current and voltage transformer wiring
 Our test disconnect terminal blocks featuring spring and screw connection technology allow you to create all the important converter circuits for measuring current, voltage and power in a safe and sophisticated way.

General ordering data

Type	LL TTB 6/1	Version	
Order No.	2710230000	Locking lever (terminal)	
GTIN (EAN)	4050118847925		
Qty.	50 ST		
Type	LL TTB 6/1 BK	Version	
Order No.	2710280000	Locking lever (terminal)	
GTIN (EAN)	4050118847963		
Qty.	50 ST		
Type	LL TTB 6/1 BL	Version	
Order No.	2710240000	Locking lever (terminal)	
GTIN (EAN)	4050118847918		
Qty.	50 ST		
Type	LL TTB 6/1 BR	Version	
Order No.	2762590000	Locking lever (terminal)	
GTIN (EAN)	4064675018377		
Qty.	50 ST		
Type	LL TTB 6/1 GN	Version	
Order No.	2710250000	Locking lever (terminal)	
GTIN (EAN)	4050118847949		
Qty.	50 ST		

ATTB 6 PE

Weidmüller Interface GmbH & Co. KG

Klingenbergstraße 26
D-32758 Detmold
Germany

www.weidmueller.com

Accessories

Type	LL TTB 6/1 RD	Version
Order No.	2710270000	Locking lever (terminal)
GTIN (EAN)	4050118847956	
Qty.	50 ST	
Type	LL TTB 6/1 VT	Version
Order No.	2710290000	Locking lever (terminal)
GTIN (EAN)	4050118847970	
Qty.	50 ST	
Type	LL TTB 6/1 WT	Version
Order No.	2817220000	Locking lever (terminal)
GTIN (EAN)	4064675322535	
Qty.	50 ST	
Type	LL TTB 6/1 YL	Version
Order No.	2710260000	Locking lever (terminal)
GTIN (EAN)	4050118893335	
Qty.	50 ST	
Type	LL TTB 6/2	Version
Order No.	2710300000	Locking lever (terminal)
GTIN (EAN)	4050118848243	
Qty.	50 ST	
Type	LL TTB 6/2 BK	Version
Order No.	2710350000	Locking lever (terminal)
GTIN (EAN)	4050118848274	
Qty.	50 ST	
Type	LL TTB 6/2 BL	Version
Order No.	2710310000	Locking lever (terminal)
GTIN (EAN)	4050118848250	
Qty.	50 ST	
Type	LL TTB 6/2 BR	Version
Order No.	2762600000	Locking lever (terminal)
GTIN (EAN)	4064675018384	
Qty.	50 ST	
Type	LL TTB 6/2 CM	Version
Order No.	2710370000	Locking lever (terminal)
GTIN (EAN)	4064675012092	
Qty.	50 ST	
Type	LL TTB 6/2 CM BK	Version
Order No.	2710420000	Locking lever (terminal)
GTIN (EAN)	4064675012641	
Qty.	50 ST	
Type	LL TTB 6/2 CM BL	Version
Order No.	2710380000	Locking lever (terminal)
GTIN (EAN)	4064675012603	
Qty.	50 ST	
Type	LL TTB 6/2 CM BR	Version
Order No.	2762610000	Locking lever (terminal)
GTIN (EAN)	4064675018391	
Qty.	50 ST	
Type	LL TTB 6/2 CM GN	Version
Order No.	2710390000	Locking lever (terminal)
GTIN (EAN)	4064675012610	
Qty.	50 ST	

ATTB 6 PE

Weidmüller Interface GmbH & Co. KG
 Klingenbergstraße 26
 D-32758 Detmold
 Germany

www.weidmueller.com

Accessories

Type	LL TTB 6/2 CM RD	Version
Order No.	2710410000	Locking lever (terminal)
GTIN (EAN)	4064675012634	
Qty.	50 ST	
Type	LL TTB 6/2 CM VT	Version
Order No.	2710430000	Locking lever (terminal)
GTIN (EAN)	4064675012658	
Qty.	50 ST	
Type	LL TTB 6/2 CM WT	Version
Order No.	2817240000	Locking lever (terminal)
GTIN (EAN)	4064675322559	
Qty.	50 ST	
Type	LL TTB 6/2 CM YL	Version
Order No.	2710400000	Locking lever (terminal)
GTIN (EAN)	4064675012627	
Qty.	50 ST	
Type	LL TTB 6/2 GN	Version
Order No.	2710320000	Locking lever (terminal)
GTIN (EAN)	4050118848328	
Qty.	50 ST	
Type	LL TTB 6/2 RD	Version
Order No.	2710340000	Locking lever (terminal)
GTIN (EAN)	4050118848281	
Qty.	50 ST	
Type	LL TTB 6/2 VT	Version
Order No.	2710360000	Locking lever (terminal)
GTIN (EAN)	4050118848267	
Qty.	50 ST	
Type	LL TTB 6/2 WT	Version
Order No.	2817230000	Locking lever (terminal)
GTIN (EAN)	4064675322542	
Qty.	50 ST	
Type	LL TTB 6/2 YL	Version
Order No.	2710330000	Locking lever (terminal)
GTIN (EAN)	4050118848311	
Qty.	50 ST	
Type	LL TTB 6/3	Version
Order No.	2710440000	Locking lever (terminal)
GTIN (EAN)	4050118848236	
Qty.	50 ST	
Type	LL TTB 6/3 CM	Version
Order No.	2726100000	Locking lever (terminal)
GTIN (EAN)	4064675012665	
Qty.	50 ST	
Type	LL TTB 6/4	Version
Order No.	2710450000	Locking lever (terminal)
GTIN (EAN)	4050118848229	
Qty.	25 ST	
Type	LL TTB 6/4 CM	Version
Order No.	2726110000	Locking lever (terminal)
GTIN (EAN)	4064675012672	
Qty.	50 ST	

ATTB 6 PE

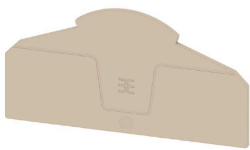
Weidmüller Interface GmbH & Co. KG
 Klingenbergstraße 26
 D-32758 Detmold
 Germany

www.weidmueller.com

Accessories

Type	LL TTB 6/6	Version	
Order No.	2710460000	Locking lever (terminal)	
GTIN (EAN)	4050118848212		
Qty.	10 ST		

End plate

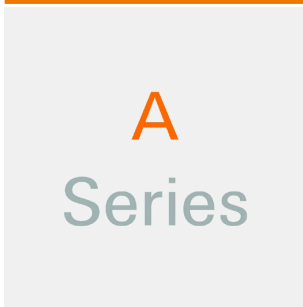


Current and voltage transformer wiring
 Our test disconnect terminal blocks featuring spring and screw connection technology allow you to create all the important converter circuits for measuring current, voltage and power in a safe and sophisticated way.

General ordering data

Type	EP TTB 6	Version	
Order No.	2710170000	A-series, End plate	
GTIN (EAN)	4050118822229		
Qty.	20 ST		

A-Series



Weidmüller's range of products includes end brackets that guarantee a permanent, reliable mounting on the terminal rail and prevent sliding. Versions with and without screws are available. The end brackets include marking options, also for group markers, and also a test plug holder.

General ordering data

Type	AEB 35 SCL/1 V0	Version	
Order No.	2661280000	A-series, End bracket	
GTIN (EAN)	4050118702163		
Qty.	20 ST		
Type	AEB 35 SCL/1 V0 BK	Version	
Order No.	2661300000	A-series, End bracket	
GTIN (EAN)	4050118702187		
Qty.	20 ST		
Type	AEB 35 SCL/1 V0 GY	Version	
Order No.	2661290000	A-series, End bracket	
GTIN (EAN)	4050118702170		
Qty.	20 ST		

ATTB 6 PE

Weidmüller Interface GmbH & Co. KG
 Klingenbergstraße 26
 D-32758 Detmold
 Germany

Accessories

www.weidmueller.com

Shorting elements



The short circuit bridge can be simply and quickly inserted into the terminal blocks. If several levers are connected simultaneously with the lever connector, the make before break can be realised. Once mounted, the short circuit bridge cannot be removed from the application.

General ordering data

Type	SCCB TTB 6/2	Version
Order No.	2710190000	Cross-connector (terminal), Plugged, orange, 30 A, Number of poles:
GTIN (EAN)	4050118847987	2, Pitch in mm (P): 8.10, Insulated: Yes, Width: 16 mm
Qty.	25 ST	
Type	SCCB TTB 6/3	Version
Order No.	2710200000	Cross-connector (terminal), Plugged, orange, 30 A, Number of poles:
GTIN (EAN)	4050118847994	3, Pitch in mm (P): 8.10, Insulated: Yes, Width: 24.1 mm
Qty.	25 ST	
Type	SCCB TTB 6/4	Version
Order No.	2710210000	Cross-connector (terminal), Plugged, orange, 30 A, Number of poles:
GTIN (EAN)	4050118848007	4, Pitch in mm (P): 8.10, Insulated: Yes, Width: 32.2 mm
Qty.	25 ST	

6 mm²

6
mm²

The plug-in cross-connections feature easy handling and quick installation. This saves a great deal of time during installation in comparison with screwed solutions.

General ordering data

Type	ZQV 6N/10	Version
Order No.	2733970000	Cross-connector (terminal), Plugged, orange, 41 A, Number of poles:
GTIN (EAN)	4064675066811	10, Pitch in mm (P): 8.00, Insulated: Yes, Width: 3.1 mm
Qty.	20 ST	
Type	ZQV 6N/6	Version
Order No.	2733950000	Cross-connector (terminal), Plugged, orange, 41 A, Number of poles:
GTIN (EAN)	4064675066699	6, Pitch in mm (P): 8.00, Insulated: Yes, Width: 3.1 mm
Qty.	20 ST	
Type	ZQV 6N/7	Version
Order No.	2733960000	Cross-connector (terminal), Plugged, orange, 41 A, Number of poles:
GTIN (EAN)	4064675066804	7, Pitch in mm (P): 8.00, Insulated: Yes, Width: 3.1 mm
Qty.	20 ST	

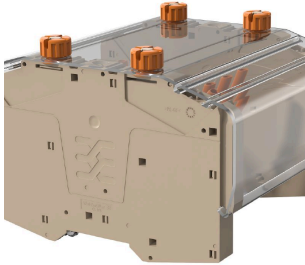
ATTB 6 PE

Weidmüller Interface GmbH & Co. KG
 Klingenbergstraße 26
 D-32758 Detmold
 Germany

www.weidmueller.com

Accessories

Cover profiles



Current and voltage transformer wiring
 Our test disconnect terminal blocks featuring spring and screw connection technology allow you to create all the important converter circuits for measuring current, voltage and power in a safe and sophisticated way.

General ordering data

Type	CH TTB	Version
Order No.	2710130000	Cover hood (terminal)
GTIN (EAN)	4064675021155	
Qty.	1 ST	
Type	CP TTB	Version
Order No.	2710140000	Cover hood (terminal)
GTIN (EAN)	4064675014171	
Qty.	10 ST	
Type	CS TTB	Version
Order No.	2710150000	A-series, End bracket
GTIN (EAN)	4064675021148	
Qty.	10 ST	

DEK 5/8



WS/ DEK

MultiMark terminal markers use an innovative composite material made from two components. The hard base contour of the marker snaps securely into the connector. The elastic surface finish makes the marker easy to mount. This specially punched material enables the strips to be stretched to accommodate the slight variations in spacing that tend to add up, especially with long terminal blocks. Another advantage: the excellent printability of the surface material guarantees durable and wear-resistant labelling. A print resolution of 300 dpi also produces a very legible script.

Your benefits with MultiMark

- Firm hold and durable printing
- Continuous strips save installation time
- Easy mounting thanks to an innovative composite material
- Large label field for optimal legibility
- High flexibility thanks to manufacturer independence

General ordering data

Type	DEK-A 5/8 MM WS	Version
Order No.	2448860000	Dekafix, Terminal marker, 5 x 8.1 mm, Weidmueller, white
GTIN (EAN)	4050118462968	
Qty.	500 ST	

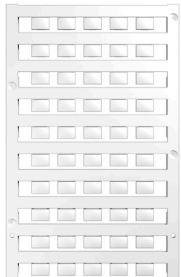
ATTB 6 PE

Weidmüller Interface GmbH & Co. KG
 Klingenbergstraße 26
 D-32758 Detmold
 Germany

Accessories

www.weidmueller.com

Blank



The Dekafix (DEK) marker is the universal marker for all conductor and plug-in connectors as well as for electronic sub-assemblies. The system is ideal for short number sequences and covers a wide range of ready-printed markers.

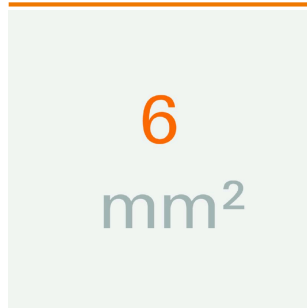
Strips for fast installation in only one work step. The printing is easy to read, rich in contrast and available in various widths.

- Large range of ready-to-use markers
 - Strips for fast installation
 - Terminal markers, suitable for all Weidmüller cable connectors
 - Available as blank MultiCard or with standard printing
- For custom printing: Please send us a file of our labeling software M-Print PRO or M-Print PRO Online (without installation) for your labeling specifications.

General ordering data

Type	DEK 5/8-11.5 MC NE WS	Version
Order No.	1341630000	Dekafix, Terminal marker, 5 x 8 mm, Pitch in mm (P): 8.00
GTIN (EAN)	4050118145946	Weidmueller, white
Qty.	500 ST	

6 mm²



The plug-in cross-connections feature easy handling and quick installation. This saves a great deal of time during installation in comparison with screwed solutions.

General ordering data

Type	ZQV 6N/10 BL	Version
Order No.	2786910000	Cross-connector (terminal), Plugged, blue, 41 A, Number of poles: 10, Pitch in mm (P): 8.00, Insulated: Yes, Width: 78.7 mm
GTIN (EAN)	4064675064602	
Qty.	20 ST	
Type	ZQV 6N/2	Version
Order No.	1985740000	Cross-connector (terminal), Plugged, orange, 41 A, Number of poles: 2, Pitch in mm (P): 8.00, Insulated: Yes, Width: 13.7 mm
GTIN (EAN)	4050118370362	
Qty.	60 ST	
Type	ZQV 6N/3	Version
Order No.	1985760000	Cross-connector (terminal), Plugged, orange, 41 A, Number of poles: 3, Pitch in mm (P): 8.00, Insulated: Yes, Width: 21.8 mm
GTIN (EAN)	4050118370263	
Qty.	60 ST	
Type	ZQV 6N/3 BL	Version
Order No.	1985840000	Cross-connector (terminal), Plugged, blue, 41 A, Number of poles: 3, Pitch in mm (P): 8.00, Insulated: Yes, Width: 21.8 mm
GTIN (EAN)	4050118370379	
Qty.	60 ST	

ATTB 6 PE

Weidmüller Interface GmbH & Co. KG
 Klingenbergstraße 26
 D-32758 Detmold
 Germany

www.weidmueller.com

Accessories

Type	ZQV 6N/4	Version
Order No.	1985780000	Cross-connector (terminal), Plugged, orange, 41 A, Number of poles: 4, Pitch in mm (P): 8.00, Insulated: Yes, Width: 29.9 mm
GTIN (EAN)	4050118370287	
Qty.	60 ST	
Type	ZQV 6N/4 BL	Version
Order No.	1985850000	Cross-connector (terminal), Plugged, blue, 41 A, Number of poles: 4, Pitch in mm (P): 8.00, Insulated: Yes, Width: 29.9 mm
GTIN (EAN)	4050118370447	
Qty.	60 ST	
Type	ZQV 6N/6 BL	Version
Order No.	2786890000	Cross-connector (terminal), Plugged, blue, 41 A, Number of poles: 6, Pitch in mm (P): 8.00, Insulated: Yes, Width: 46.3 mm
GTIN (EAN)	4064675064572	
Qty.	20 ST	
Type	ZQV 6N/7 BL	Version
Order No.	2786900000	Cross-connector (terminal), Plugged, blue, 41 A, Number of poles: 7, Pitch in mm (P): 8.00, Insulated: Yes, Width: 54.4 mm
GTIN (EAN)	4064675064596	
Qty.	20 ST	
Type	ZQV 6N/2 BL	Version
Order No.	1985830000	Cross-connector (terminal), Plugged, blue, 41 A, Number of poles: 2, Pitch in mm (P): 8.00, Insulated: Yes, Width: 13.7 mm
GTIN (EAN)	4050118370232	
Qty.	60 ST	