



Inductive sensor

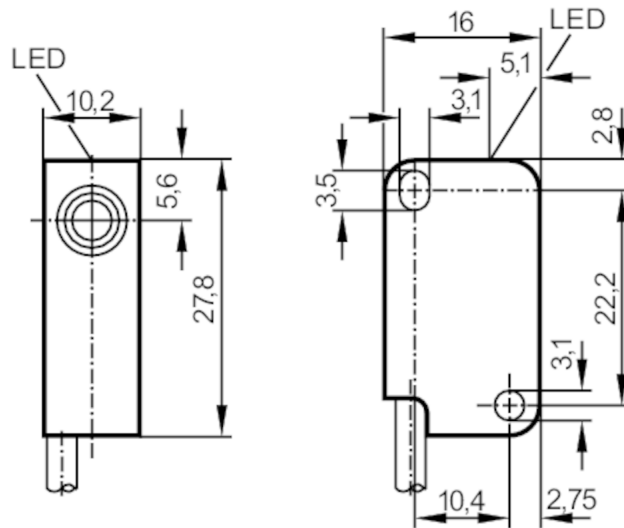
IS-2002-FRKG/4M/PH

phase-out article

Discontinuation date: 03/31/2026

Alternative articles: IS5026

When selecting an alternative article and accessories please note that technical data may differ!



Product characteristics

Electrical design		PNP/NPN
Output function		normally open / normally closed; (selectable)
Sensing range	[mm]	2
Housing		rectangular
Dimensions	[mm]	27.8 x 10.2 x 16

Electrical data

Operating voltage	[V]	5...36 DC
Protection class		III
Reverse polarity protection		yes

Outputs

Electrical design		PNP/NPN
Output function		normally open / normally closed; (selectable)
Max. voltage drop switching output DC	[V]	4.6
Minimum load current	[mA]	4
Max. leakage current	[mA]	0.8
Permanent current rating of switching output DC	[mA]	200
Switching frequency DC	[Hz]	2000
Short-circuit protection		yes
Overload protection		yes

IS5049



Inductive sensor

IS-2002-FRKG/4M/PH

Detection zone		
Sensing range	[mm]	2
Real sensing range Sr	[mm]	2 ± 10 %
Operating distance	[mm]	0...1.62
Accuracy / deviations		
Correction factor		steel: 1 / stainless steel: 0.7 / brass: 0.4 / aluminium: 0.3 / copper: 0.2
Hysteresis	[% of Sr]	1...15
Switch point drift	[% of Sr]	-10...10
Operating conditions		
Ambient temperature	[°C]	-25...80
Protection		IP 67
Tests / approvals		
EMC	EN 61000-4-2 ESD	4 kV CD / 8 kV AD
	EN 61000-4-3 HF radiated	3 V/m
	EN 61000-4-4 Burst	2 kV
	EN 61000-4-6 HF conducted	3 V
	EN 55011	class B
MTTF	[years]	2460
Mechanical data		
Weight	[g]	82
Housing		rectangular
Mounting		flush mountable
Dimensions	[mm]	27.8 x 10.2 x 16
Materials		PBT
Tightening torque	[Nm]	< 0.5; (with washer)
Displays / operating elements		
Display	switching status	1 x LED, yellow
Remarks		
Pack quantity		1 pcs.

IS5049



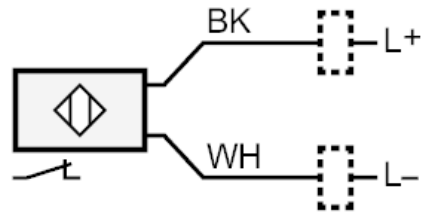
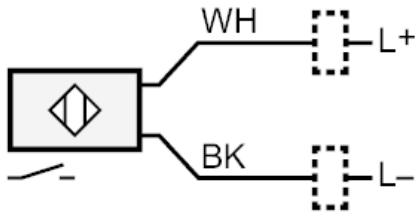
Inductive sensor

IS-2002-FRKG/4M/PH

Electrical connection

Cable: 4 m, PUR; 2 x 0.14 mm²

Connection



BK = Core colours :
WH = black
white