

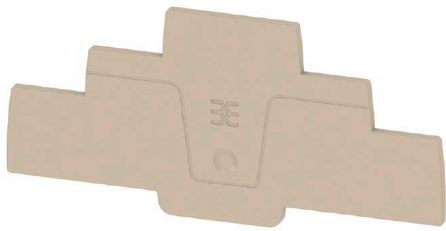
AEP 3T 1.5**Weidmüller Interface GmbH & Co. KG**

Klingenbergstraße 26

D-32758 Detmold

Germany

www.weidmueller.com



End plates are fitted to the open side of the last modular terminal before the end bracket. The use of an end plate ensures the function of the modular terminal and the specified rated voltage. It guarantees protection against contact with live parts and makes the final terminal finger-proof.

General ordering data

Version	A-series, End plate
Order No.	2816950000
Type	AEP 3T 1.5
GTIN (EAN)	4064675315391
Qty.	20 items

AEP 3T 1.5

Weidmüller Interface GmbH & Co. KG
 Klingenbergstraße 26
 D-32758 Detmold
 Germany

www.weidmueller.com

Technical data

Approvals

ROHS	Conform
------	---------

Dimensions and weights

Depth	49.5 mm	Depth (inches)	1.9488 inch
Height	104.3 mm	Height (inches)	4.1063 inch
Width	2 mm	Width (inches)	0.0787 inch
Net weight	3.96 g		

Temperatures

Continuous operating temp., min.	-60 °C	Continuous operating temp., max.	130 °C
----------------------------------	--------	----------------------------------	--------

Environmental Product Compliance

RoHS Compliance Status	Compliant without exemption		
REACH SVHC	No SVHC above 0.1 wt%		
Product Carbon Footprint	Cradle to gate	0.035 kg CO2eq.	

Material data

Basic material	Wemid	Colour	dark beige
UL 94 flammability rating	V-0		

Additional technical data

Snap-on	Yes
---------	-----

Classifications

ETIM 6.0	EC000886	ETIM 7.0	EC000886
ETIM 8.0	EC000886	ETIM 9.0	EC000886
ETIM 10.0	EC000886	ECLASS 9.1	27-14-11-33
ECLASS 10.0	27-14-11-33	ECLASS 11.0	27-14-11-33
ECLASS 12.0	27-14-11-33	ECLASS 13.0	27-25-03-01
ECLASS 14.0	27-25-03-01	ECLASS 15.0	27-25-03-01