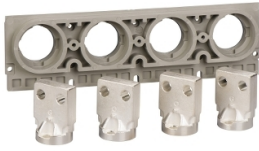


Product datasheet

Specifications



horizontal rear connections, 630 A
to 1600 A, fixed circuit breaker,
bottom mounting, 3 poles

Local distributor code:

383450157

33607

EAN Code: 3303430336075

Main

Range of product	MasterPact NT ComPacT NS630b...1600 new generation
Product or component type	Rear connection
Accessory / separate part category	Connection accessory
Range compatibility	Masterpact MasterPact NT ComPact ComPact NS630b...1600
Poles description	3P
Mounting mode	Fixed
[In] rated current	630...1600 A

Complementary

Location of connection	Rear
Localisation on device	Bottom
Connection position	Horizontal
Connection pitch	70 mm

Packing Units

Unit Type of Package 1	PCE
Number of Units in Package 1	1
Package 1 Height	3.0 cm
Package 1 Width	8.0 cm
Package 1 Length	20.0 cm
Package 1 Weight	2.264 kg

Logistical informations

Country of origin	FR
--------------------------	----

Contractual warranty

Warranty (in months)	18
Warranty	18 months

Disclaimer: This documentation is not intended as a substitute for and is not to be used for determining suitability or reliability of these products for specific user applications


Environmental Data

Schneider Electric aims to achieve Net Zero status by 2050 through supply chain partnerships, lower impact materials, and circularity via our ongoing “Use Better, Use Longer, Use Again” campaign to extend product lifetimes and recyclability.


[Environmental Data explained >](#)

[How we assess product sustainability >](#)

Use Better

 Materials and Substances	
Packaging made with recycled cardboard	Yes
Packaging without single use plastic	No
EU RoHS Directive	Compliant
SCIP Number	C588eeeb-58ac-4d17-9002-eac85122f8d9
REACH Regulation	REACH Declaration
Halogen-free status	Halogen free plastic parts product

Use Again

 Repack and remanufacture	
Take-back	No