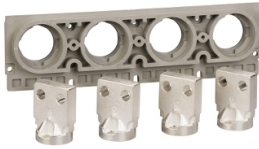


Product datasheet

Specifications



horizontal rear connections, 630 A to 1600 A, drawout circuit breaker, bottom mounting, 3 poles

Local distributor code:

383501404

33732

EAN Code: 3303430337324

Main

Range of product	MasterPact NT ComPacT NS630b...1600 new generation
Product or component type	Rear connection
Accessory / separate part category	Connection accessory
Range compatibility	Masterpact MasterPact NT ComPact ComPact NS630b...1600
Poles description	3P
Mounting mode	Drawout
[In] rated current	630...1600 A

Complementary

Location of connection	Rear
Localisation on device	Bottom
Connection position	Horizontal
Connection pitch	70 mm

Packing Units

Unit Type of Package 1	PCE
Number of Units in Package 1	1
Package 1 Height	1.5 cm
Package 1 Width	4.5 cm
Package 1 Length	6.0 cm
Package 1 Weight	2.038 kg

Logistical informations

Country of origin	FR
-------------------	----

Contractual warranty

Warranty (in months)	18
Warranty	18 months

Disclaimer: This documentation is not intended as a substitute for and is not to be used for determining suitability or reliability of these products for specific user applications



Environmental Data

Schneider Electric aims to achieve Net Zero status by 2050 through supply chain partnerships, lower impact materials, and circularity via our ongoing “Use Better, Use Longer, Use Again” campaign to extend product lifetimes and recyclability.

[Environmental Data explained >](#)

[How we assess product sustainability >](#)

Environmental footprint

Total lifecycle Carbon footprint	60
----------------------------------	----

Environmental Disclosure	Product Environmental Profile
--------------------------	---

Use Better

Materials and Substances

Packaging made with recycled cardboard	Yes
--	-----

Packaging without single use plastic	No
--------------------------------------	----

EU RoHS Directive	Compliant
-----------------------------------	-----------

SCIP Number	C588eeeb-58ac-4d17-9002-eac85122f8d9
-------------	--------------------------------------

REACH Regulation	REACH Declaration
------------------	-----------------------------------

Use Again

Repack and remanufacture

End of life manual availability	No need of specific recycling operations
---------------------------------	--

Take-back	No
-----------	----