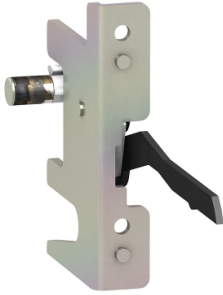


# Product datasheet

Specifications



## safety trip advanced opening of plug-in kit - for NS100..250

29270

⚠ Discontinued on: 19 May 2023

EAN Code: 3303430292708

⚠ Discontinued

### Main

Product or component type	Safety trip advanced opening
Accessory / separate part category	Protection accessory
Poles description	3P 4P

### Complementary

Mounting mode	Plug-in
---------------	---------

### Packing Units

Unit Type of Package 1	PCE
Number of Units in Package 1	1

### Contractual warranty

Warranty (in months)	18
----------------------	----

Disclaimer: This documentation is not intended as a substitute for and is not to be used for determining suitability or reliability of these products for specific user applications

## Environmental Data

Schneider Electric aims to achieve Net Zero status by 2050 through supply chain partnerships, lower impact materials, and circularity via our ongoing “Use Better, Use Longer, Use Again” campaign to extend product lifetimes and recyclability.

[Environmental Data explained >](#)

[How we assess product sustainability >](#)

### Use Better

#### Materials and Substances

[EU RoHS Directive](#)

Pro-active compliance (Product out of EU RoHS legal scope)