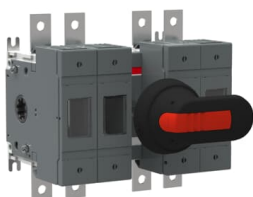




 PRODUCT-DETAILS

OS200GB22N1P

OS200GB22N1P SWITCH FUSE



General Information

Extended Product Type	OS200GB22N1P
Product ID	1SCA132202R1001
EAN	6417019613505
Catalog Description	OS200GB22N1P SWITCH FUSE
Long Description	Switch-disconnector fuse, 200A, 4-pole, British Standard A2/A3/A4, front operated, switched non-fusible fourth pole, handle and shaft included.

ABB EcoSolutions

ABB Site Meeting Group Waste To Landfill Target	UL 2799 Zero Waste To Landfill Validation available
End Of Life Disassembling Instructions	1SCC311049M0201
Environmental Product Declaration - EPD	1SCC311196D0201

Material Compliance

Conflict Minerals Reporting Template (CMRT)	9AKK108467A5658
REACH Declaration	1SCC011021D0201
RoHS Declaration	1SCC011020D0201
RoHS Information	Following EU Directive 2011/65/EU and Amendment 2015/863 July 22, 2019
Toxic Substances Control Act - TSCA	1SCC011025D0201

Popular Downloads

Data Sheet, Technical Information	1SCC311013C0201
Instructions and Manuals	1SCC311037M0206
Mechanical Drawings	OS100-200GB22N.stp
Environmental Product Declaration - EPD	1SCC311196D0201

Environmental

Degree of Protection	acc. to IEC 60529 IP20
Pollution Degree	3

Ordering

Minimum Order Quantity	1 piece
Customs Tariff Number	85365080
Country or Territory of Origin	Finland

Dimensions

Product Net Width	250 mm
Product Net Height	220 mm
Product Net Depth / Length	155 mm
Product Net Weight	2.46 kg

Container Information

Package Level 1 Units	box 1 piece
Package Level 1 Width	260 mm 10.2 in
Package Level 1 Depth / Length	290 mm 11.4 in
Package Level 1 Height	190 mm 7.5 in
Package Level 1 Gross Weight	2.7 kg 6 lb
Package Level 1 EAN	6417019613505

Technical

Conventional Free-air Thermal Current (I_{th})	$\Theta = 40\text{ °C}$ 200 A
Conventional Thermal Current (I_{the})	Fully Enclosed 200 A
Degree of Protection	acc. to IEC 60529 IP20
Fourth Pole Position	Left Side
Fourth Pole Type	Switched - With Solid Link
Fuse Size	A2-A4
Fuse System	British Standard
Handle Type	Pistol handle
Mounting Type	Base mounting
Number of Poles	4P
Operating Mode	Front
Pollution Degree	3
Position of Line Terminals	Top In - Bottom Out Bottom In - Top Out
Power Loss	at Rated Operating Conditions per Pole 9 W
Rated Conditional Short-Circuit Current (I_{nc})	(415 V) 80 kA
Rated Current (I_n)	Main Circuit 200 A
Rated Impulse Withstand Voltage (U_{imp})	8 kV
Rated Insulation Voltage (U_i)	1000 V
Rated Operational Current AC-21A (I_e)	(500 V) 160 A (690 V) 160 A
Rated Operational Current AC-22A (I_e)	(380 ... 415 V) 160 A (500 V) 160 A (690 V) 160 A
Rated Operational Current AC-22B (I_e)	(380 ... 415 V) 200 A
Rated Operational Current AC-23A (I_e)	(380 ... 415 V) 160 A (500 V) 160 A (690 V) 160 A
Rated Operational Power AC-23A (P_e)	(220 ... 240 V) 45 kW (400 V) 75 kW (415 V) 75 kW (500 V) 90 kW (690 V) 132 kW
Rated Operational Voltage	Main Circuit 690 V AC
Rated Short-time Withstand Current Low Voltage (I_{cw})	for 1 s 5 kiloampere rms
Standards	IEC 60947-3
Switches Operating Mechanism	22 (Between the Poles)
Terminal Type	Lug terminals
Terminal Width	20 mm
Tightening Torque	15 ... 22 N·m

Technical UL/CSA

Tightening Torque	15 ... 22 N·m
-------------------	---------------

Certificates and Declarations

A2L Certificate – IEC	1SCC311209D0201
ATEX Certificate	No certification needed
CCC Certificate	CCC OS200-250 2016
Declaration of Conformity - CE	1SCC311141D2703
DNV GL Certificate	1SCC311123D0203
UL Certificate	No certification needed

External Classifications and Standards

Object Classification Code	Q
ETIM 9	EC001040 - Fuse switch disconnecter
ETIM 10	EC001040 - Fuse switch disconnecter
UNSPSC	39122233
IDEA Granular Category Code (IGCC)	5291 >> Fuse switch disconnecter
eClass	V11.1 : 27371401
WEEE Category	5. Small Equipment (No External Dimension More Than 50 cm)

Categories

Low Voltage Products and Systems → Switches → Switch Fuses

