

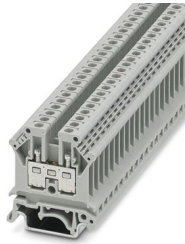
# UK 4 - Feed-through terminal block



3003017

<https://www.phoenixcontact.com/gb/products/3003017>

Please be informed that the data shown in this PDF document is generated from our online catalog. Please find the complete data in the user documentation. Our general terms of use for downloads are valid.



Feed-through terminal block, nom. voltage: 800 V, nominal current: 32 A, number of connections: 2, number of positions: 1, connection method: Screw connection, cross section: 0.2 mm<sup>2</sup> - 4 mm<sup>2</sup>, mounting type: NS 35/7,5, NS 35/15, NS 32, color: gray

## Commercial data

|                                      |               |
|--------------------------------------|---------------|
| Item number                          | 3003017       |
| Packing unit                         | 50 pc         |
| Minimum order quantity               | 50 pc         |
| Sales key                            | BE1211        |
| Product key                          | BE1211        |
| GTIN                                 | 4017918090418 |
| Weight per piece (including packing) | 10.32 g       |
| Weight per piece (excluding packing) | 10.001 g      |
| Customs tariff number                | 85369010      |
| Country of origin                    | DE            |

# UK 4 - Feed-through terminal block



3003017

<https://www.phoenixcontact.com/gb/products/3003017>

## Technical data

### Product properties

|                       |                             |
|-----------------------|-----------------------------|
| Product type          | Feed-through terminal block |
| Product family        | UK                          |
| Number of positions   | 1                           |
| Number of connections | 2                           |
| Number of rows        | 1                           |
| Potentials            | 1                           |

### Insulation characteristics

|                      |     |
|----------------------|-----|
| Overvoltage category | III |
| Degree of pollution  | 3   |

### Electrical properties

|   |      |
|---|------|
| Rated surge voltage                             | 8 kV |
| Maximum power dissipation for nominal condition | 0 W  |

### Connection data

|                                 |   |
|---------------------------------|---|
| Number of connections per level | 2 |
|---------------------------------|---|

#### Level 1 above 1 below 1

|   |  |
|---|--|
| Connection method   | Screw connection                             |
| Screw thread  | M3   |
| Tightening torque   | 0.6 ... 0.8 Nm                               |
| Stripping length  | 8 mm   |
| Connection in acc. with standard  | IEC / EN                                     |
| Conductor cross-section rigid   | 0.2 mm <sup>2</sup> ... 4 mm <sup>2</sup>    |
| Cross section AWG   | 24 ... 12 (converted acc. to IEC)            |
| Conductor cross-section flexible  | 0.2 mm <sup>2</sup> ... 4 mm <sup>2</sup>    |
| Conductor cross-section, flexible [AWG]   | 24 ... 12 (converted acc. to IEC)            |
| Conductor cross-section flexible (ferrule without plastic sleeve)                         | 0.25 mm <sup>2</sup> ... 4 mm <sup>2</sup>   |
| Flexible conductor cross-section (ferrule with plastic sleeve)                            | 0.25 mm <sup>2</sup> ... 2.5 mm <sup>2</sup> |
| 2 conductors with same cross section, solid   | 0.2 mm <sup>2</sup> ... 1.5 mm <sup>2</sup>  |
| 2 conductors with same cross section, flexible  | 0.2 mm <sup>2</sup> ... 1.5 mm <sup>2</sup>  |
| 2 conductors with same cross section, flexible, with ferrule without plastic sleeve       | 0.25 mm <sup>2</sup> ... 1.5 mm <sup>2</sup> |
| 2 conductors with the same cross section, flexible, with TWIN ferrule with plastic sleeve | 0.5 mm <sup>2</sup> ... 1.5 mm <sup>2</sup>  |
| Nominal current   | 32 A   |
| Nominal voltage   | 800 V  |
| Connection in acc. with standard  | UL   |
| Cross section AWG   | 28 ... 12 (converted acc. to IEC)            |
| Nominal current   | 20 A   |
| Nominal voltage   | 600 V  |

# UK 4 - Feed-through terminal block



3003017

<https://www.phoenixcontact.com/gb/products/3003017>

|                                  |                                   |
|----------------------------------|-----------------------------------|
| Connection in acc. with standard | CSA                               |
| Cross section AWG                | 28 ... 12 (converted acc. to IEC) |
| Nominal current                  | 25 A                              |
| Nominal voltage                  | 600 V                             |

## Dimensions

|                    |         |
|--------------------|---------|
| Width              | 6.2 mm  |
| End cover width    | 1.8 mm  |
| Height             | 42.5 mm |
| Depth on NS 32     | 52 mm   |
| Depth on NS 35/7,5 | 47 mm   |
| Depth on NS 35/15  | 54.5 mm |

## Material specifications

|   |                 |
|---|-----------------|
| Color   | gray (RAL 7042) |
| Flammability rating according to UL 94                                  | V2              |
| Insulating material group   | I               |
| Insulating material   | PA              |
| Temperature index of insulation material (DIN EN 60216-1 (VDE 0304-21)) | 125 °C          |
| Relative insulation material temperature index (Elec., UL 746 B)        | 125 °C          |

## Electrical tests

### Surge voltage test

|                       |             |
|-----------------------|-------------|
| Test voltage setpoint | 9.8 kV      |
| Result                | Test passed |

### Temperature-rise test

|  |                                     |
|--|-------------------------------------|
| Requirement temperature-rise test              | Increase in temperature $\leq$ 45 K |
| Result   | Test passed                         |
| Short-time withstand current 4 mm <sup>2</sup> | 0.48 kA                             |
| Result   | Test passed                         |

### Power-frequency withstand voltage

|                       |             |
|-----------------------|-------------|
| Test voltage setpoint | 2 kV        |
| Result                | Test passed |

## Mechanical properties

### Mechanical data

|                 |     |
|-----------------|-----|
| Open side panel | Yes |
|-----------------|-----|

## Mechanical tests

### Mechanical strength

|        |             |
|--------|-------------|
| Result | Test passed |
|--------|-------------|

# UK 4 - Feed-through terminal block



3003017

<https://www.phoenixcontact.com/gb/products/3003017>

## Attachment on the carrier

|                         |             |
|-------------------------|-------------|
| DIN rail/fixing support | NS 32/NS 35 |
| Test force setpoint     | 1 N         |
| Result                  | Test passed |

## Test for conductor damage and slackening

|                                |  |
|--------------------------------|--|
| Rotation speed                 | 10 rpm   |
| Revolutions                    | 135  |
| Conductor cross-section/weight | 0.2 mm <sup>2</sup> / 0.2 kg<br>4 mm <sup>2</sup> / 0.9 kg |
| Result                         | Test passed  |

## Environmental and real-life conditions

### Needle-flame test

|                  |             |
|------------------|-------------|
| Time of exposure | 30 s        |
| Result           | Test passed |

### Ambient conditions

|  |  |
|--|--|
| Ambient temperature (operation)          | -60 °C ... 110 °C (Operating temperature range incl. self-heating; for max. short-term operating temperature, see RTI Elec.) |
| Ambient temperature (storage/transport)  | -25 °C ... 60 °C (for a short time, not exceeding 24 h, -60 °C to +70 °C)  |
| Ambient temperature (assembly)           | -5 °C ... 70 °C  |
| Ambient temperature (actuation)          | -5 °C ... 70 °C  |
| Permissible humidity (operation)         | 20 % ... 90 %  |
| Permissible humidity (storage/transport) | 30 % ... 70 %  |

## Standards and regulations

|                                  |          |
|----------------------------------|----------|
| Connection in acc. with standard | IEC / EN |
|                                  | UL       |
|                                  | CSA      |

## Mounting

|               |           |
|---------------|-----------|
| Mounting type | NS 35/7,5 |
|               | NS 35/15  |
|               | NS 32     |

# UK 4 - Feed-through terminal block

3003017

<https://www.phoenixcontact.com/gb/products/3003017>



## Drawings

Circuit diagram



# UK 4 - Feed-through terminal block




3003017


<https://www.phoenixcontact.com/gb/products/3003017>

## Approvals

To download certificates, visit the product detail page: <https://www.phoenixcontact.com/gb/products/3003017>

|  <b>CSA</b><br>Approval ID: 13631 |                       |                       |                   |                             |
|--|-----------------------|-----------------------|-------------------|-----------------------------|
|  | Nominal voltage $U_N$ | Nominal current $I_N$ | Cross section AWG | Cross section $\text{mm}^2$ |
| keine  |                       |                       |                   |                             |
|  | 600 V                 | 25 A                  | 28 - 12           | -                           |

|  <b>EAC</b><br>Approval ID: KZ7500651131219505 |  |  |  |  |
|---|--|--|--|--|
|---|--|--|--|--|

|  <b>cULus Recognized</b><br>Approval ID: E60425 |                       |                       |                   |                             |
|--|-----------------------|-----------------------|-------------------|-----------------------------|
|  | Nominal voltage $U_N$ | Nominal current $I_N$ | Cross section AWG | Cross section $\text{mm}^2$ |
| B  |                       |                       |                   |                             |
|  | 600 V                 | 20 A                  | 28 - 12           | -                           |
| Multi-conductor connection   | 600 V                 | 20 A                  | - 14              | -                           |
| C  |                       |                       |                   |                             |
|  | 600 V                 | 20 A                  | 28 - 12           | -                           |
| Multi-conductor connection   | 600 V                 | 20 A                  | - 14              | -                           |

|  <b>ClassNK</b><br>Approval ID: 09 ME 142 |  |  |  |  |
|--|--|--|--|--|
|--|--|--|--|--|

| <b>DNV</b><br>Approval ID: TAE00001CT |  |  |  |  |
|---------------------------------------|--|--|--|--|
|---------------------------------------|--|--|--|--|

# UK 4 - Feed-through terminal block



3003017

<https://www.phoenixcontact.com/gb/products/3003017>

## Classifications

### ECLASS

|             |          |
|-------------|----------|
| ECLASS-13.0 | 27250101 |
| ECLASS-15.0 | 27250101 |

### ETIM

|          |          |
|----------|----------|
| ETIM 9.0 | EC000897 |
|----------|----------|

### UNSPSC

|             |          |
|-------------|----------|
| UNSPSC 21.0 | 39121400 |
|-------------|----------|

# UK 4 - Feed-through terminal block



3003017

<https://www.phoenixcontact.com/gb/products/3003017>

## Environmental product compliance

### EU RoHS

|   |                    |
|---|--------------------|
| Fulfills EU RoHS substance requirements | Yes, No exemptions |
|---|--------------------|

### China RoHS

|  |  |
|--|--|
| Environment friendly use period (EFUP) | EFUP-E                                   |
|  | No hazardous substances above the limits |

### EU REACH SVHC

|                                     |                            |
|-------------------------------------|----------------------------|
| REACH candidate substance (CAS No.) | No substance above 0.1 wt% |
|-------------------------------------|----------------------------|

### EF3.0 Climate Change

|         |               |
|---------|---------------|
| CO2e kg | 0.073 kg CO2e |
|---------|---------------|

Phoenix Contact 2025 © - all rights reserved  
<https://www.phoenixcontact.com>

PHOENIX CONTACT Ltd  
Halesfield 13, Telford  
Shropshire, TF7 4PG  
01952 681700  
[info@phoenixcontact.co.uk](mailto:info@phoenixcontact.co.uk)