

## Data sheet for SIMOTICS S-1FG1

Article No. : 1FG1500-5UC46-2DE1-Z  
D11+K11

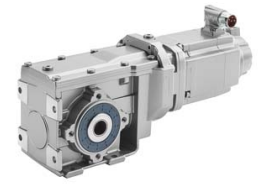


Figure similar

Client order no. :  
Order no. :  
Offer no. :  
Remarks :

Item no. :  
Consignment no. :  
Project :

### Gearbox data

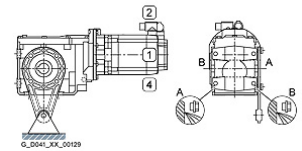
Gear box type	B19
Gearbox basic type	Bevel geared B / K
Gearbox size	19
Transmission stages	2
Transmission (ratio)	5.61
Gear number relation	667/119
Output moment maximum (short-time)	34 Nm
max. input speed (briefly)	4,500 rpm
Output speed short-time	802 rpm
Emergency off output moment (1000 cycles)	62 Nm
Radial force maximum	1,910 N
Max. permissible radial force with Mmax	1,910 N
Moment of inertia	0.23 kgcm <sup>2</sup>
Torsional stiffness	7 Nm'
Efficiency	0.94
Mounting position	M1-A
Mounting type	Torque plate
Output shaft version	Hollow shaft standard
Output shaft dimension	H20 mm
Gearbox flange diameter	-/-
Output shaft bearing	No
Figure 2 torque support	1

### General tech. specifications

Color of the housing	Standard painting (Anthracite RAL 7016)
Specification	CE / UL / CSA / EAC / cRUus
Net weight	8.12 kg
1 m-sound pressure level L <sub>pA</sub> (Tol.+3dB(A))	65
Plug position	top (default) (2)
Adapter flange position	top (default) (2)

### Lubrication and sealing

Gear oil	Synthetic oil CLPH1 VG460
Output shaft sealing	Standard
Oil charge	0.15 l



### Motor data

Motor type	Permanent-magnet synchronous motor
Motor type	Compact
DC-link voltage, max.	510...720V
Shaft height	36 mm
Cooling	Natural cooling
Rated speed	6,000 rpm
Rated torque (100K)	0.77 Nm
Rated power	0.49 kW
Rated current (100K)	1.08 A
Static torque	1.40 Nm
Static current	1.69 A
Moment of inertia	0.90 kgcm <sup>2</sup>
Efficiency η	87 %
Temperature monitoring	Pt1000 temperature sensor
Connector size	1
Degree of protection	IP65
Encoder system	Resolver R15DQ: resolver 15 bits (resolution 32768, internal multi-pole)

### Limiting data

Maximum speed (short-time)	10,000 rpm
Maximum torque	6.50 Nm
Motor current short term	8.0 A

### Optimum operating point

Optimum speed	6,000 rpm
Optimum power	0.48 kW

## Data sheet for SIMOTICS S-1FG1

Article No. : 1FG1500-5UC46-2DE1-Z  
D11+K11

### Recommended Motor Module

Rated inverter current	3.0 A
Maximum inverter current	9.0 A
Maximum torque	6.5 Nm

### Standards

Compliance with standards	CE / UL / CSA / EAC / cRUus
CE marking	EN 60034

### Options

D11	M1-A for bevel and worm gearboxes
K11	Food-grade oil CLP ISO H1 VG460

### Info servo geared motor

Outside the standard temperature range of -10 to +40 °C, further selectable options must be observed, in addition to the lubricant selection.

Further, you have to check the suitability of the components and options used for the requested temperature range.