

Product datasheet

Specifications



TeSys D contactor - 3P(3 NO) - AC-3 - ≤ 440 V 80 A - 24 V DC standard coil

Local distributor code:

381820938

LC1D80BD

EAN Code: 3389110439977

Main

| | |
|--------------------------------|--|
| Range | TeSys |
| Range of product | TeSys Deca |
| Product or component type | Contactors |
| Device short name | LC1D |
| Contactors application | Motor control Resistive load |
| Utilisation category | AC-3 AC-3e AC-4 AC-1 |
| Poles description | 3P |
| [Ue] rated operational voltage | Power circuit: ≤ 300 V DC 25...400 Hz Power circuit: ≤ 690 V AC |
| [Ie] rated operational current | 125 A (at <60 °C) at ≤ 1000 V AC AC-1 for power circuit 80 A (at <60 °C) at ≤ 440 V AC AC-3 for power circuit 80 A (at <60 °C) at ≤ 440 V AC-3e for power circuit |
| [Uc] control circuit voltage | 24 V DC |

Complementary

| | |
|---|---|
| Motor power kW | 22 kW at 220...230 V AC 50 Hz (AC-3) 37 kW at 380...400 V AC 50 Hz (AC-3) 45 kW at 415...440 V AC 50 Hz (AC-3) 55 kW at 500 V AC 50 Hz (AC-3) 45 kW at 660...690 V AC 50 Hz (AC-3) 15 kW at 400 V AC 50 Hz (AC-4) 22 kW at 220...230 V AC 50 Hz (AC-3e) 37 kW at 380...400 V AC 50 Hz (AC-3e) 45 kW at 415...440 V AC 50 Hz (AC-3e) 55 kW at 500 V AC 50 Hz (AC-3e) 45 kW at 660...690 V AC 50 Hz (AC-3e) |
| Motor power hp | 7.5 hp at 120 V AC 50/60 Hz for 1 phase motors 15 hp at 230/240 V AC 50/60 Hz for 1 phase motors 30 hp at 200/208 V AC 50/60 Hz for 3 phases motors 30 hp at 230/240 V AC 50/60 Hz for 3 phases motors 60 hp at 460/480 V AC 50/60 Hz for 3 phases motors 60 hp at 575/600 V AC 50/60 Hz for 3 phases motors |
| Compatibility code | LC1D |
| Pole contact composition | 3 NO |
| Protective cover | With |
| [Ith] conventional free air thermal current | 10 A (at 60 °C) for signalling circuit 125 A (at 60 °C) for power circuit |
| Irms rated making capacity | 140 A AC for signalling circuit conforming to IEC 60947-5-1 250 A DC for signalling circuit conforming to IEC 60947-5-1 1100 A at 440 V for power circuit conforming to IEC 60947 |

| | |
|---|--|
| Rated breaking capacity | 1100 A at 440 V for power circuit conforming to IEC 60947 |
| [Icw] rated short-time withstand current | 640 A 40 °C - 10 s for power circuit 990 A 40 °C - 1 s for power circuit 135 A 40 °C - 10 min for power circuit 320 A 40 °C - 1 min for power circuit 100 A - 1 s for signalling circuit 120 A - 500 ms for signalling circuit 140 A - 100 ms for signalling circuit |
| Associated fuse rating | 10 A gG for signalling circuit conforming to IEC 60947-5-1 200 A gG at <= 690 V coordination type 1 for power circuit 160 A gG at <= 690 V coordination type 2 for power circuit |
| Average impedance | 0.8 mOhm - Ith 125 A 50 Hz for power circuit |
| Power dissipation per pole | 5.1 W AC-3 12.5 W AC-1 5.1 W AC-3e |
| [Ui] rated insulation voltage | Power circuit: 600 V CSA certified Power circuit: 600 V UL certified Power circuit: 1000 V conforming to IEC 60947-4-1 Signalling circuit: 690 V conforming to IEC 60947-1 Signalling circuit: 600 V CSA certified Signalling circuit: 600 V UL certified |
| Overvoltage category | III |
| Pollution degree | 3 |
| [Uimp] rated impulse withstand voltage | 8 kV conforming to IEC 60947 |
| Safety reliability level | B10d = 1369863 cycles contactor with nominal load conforming to EN/ISO 13849-1 B10d = 20000000 cycles contactor with mechanical load conforming to EN/ISO 13849-1 |
| Mechanical durability | 4 Mcycles |
| Electrical durability | 0.8 Mcycles 125 A AC-1 at Ue <= 440 V 1.5 Mcycles 80 A AC-3 at Ue <= 440 V 1.5 Mcycles 80 A AC-3e at Ue <= 440 V |
| Control circuit type | DC standard |
| Coil technology | Without built-in suppressor module |
| Control circuit voltage limits | 0.1...0.3 Uc (-40...70 °C):drop-out DC 0.85...1.1 Uc (-40...55 °C):operational DC 1...1.1 Uc (55...70 °C):operational DC |
| Inrush power in W | 22 W (at 20 °C) |
| Hold-in power consumption in W | 22 W at 20 °C |
| Operating time | 95...130 ms closing 20...35 ms opening |
| Time constant | 75 ms |
| Maximum operating rate | 3600 cyc/h at 60 °C |
| Connections - terminals | Control circuit: screw clamp terminals 2 1...2.5 mm ² - cable stiffness: flexible with cable end Control circuit: screw clamp terminals 1 1...2.5 mm ² - cable stiffness: flexible with cable end Control circuit: screw clamp terminals 1 1...4 mm ² - cable stiffness: flexible without cable end Control circuit: screw clamp terminals 2 1...4 mm ² - cable stiffness: flexible without cable end Control circuit: screw clamp terminals 1 1...4 mm ² - cable stiffness: solid without cable end Control circuit: screw clamp terminals 2 1...4 mm ² - cable stiffness: solid without cable end Power circuit: connector 1 4...50 mm ² - cable stiffness: flexible without cable end Power circuit: connector 2 4...25 mm ² - cable stiffness: flexible without cable end Power circuit: connector 1 4...50 mm ² - cable stiffness: flexible with cable end Power circuit: connector 2 4...16 mm ² - cable stiffness: flexible with cable end Power circuit: connector 1 4...50 mm ² - cable stiffness: solid without cable end Power circuit: connector 2 4...25 mm ² - cable stiffness: solid without cable end |

| | |
|--------------------------------------|---|
| Tightening torque | Control circuit: 1.2 N.m - on screw clamp terminals - with screwdriver flat Ø 6 mm Control circuit: 1.2 N.m - on screw clamp terminals - with screwdriver Philips No 2 Power circuit: 12 N.m - on connector - with screwdriver flat Ø 6 to Ø 8 mm Power circuit: 12 N.m - on connector hexagonal screw head 4 mm Control circuit: 1.2 N.m - on screw clamp terminals - with screwdriver pozidriv No 2 |
| Auxiliary contact composition | 1 NO + 1 NC |
| Auxiliary contacts type | type mechanically linked 1 NO + 1 NC conforming to IEC 60947-5-1 type mirror contact 1 NC conforming to IEC 60947-4-1 |
| Signalling circuit frequency | 25...400 Hz |
| Minimum switching voltage | 17 V for signalling circuit |
| Minimum switching current | 5 mA for signalling circuit |
| Insulation resistance | > 10 MOhm for signalling circuit |
| Non-overlap time | 1.5 ms on de-energisation between NC and NO contact 1.5 ms on energisation between NC and NO contact |
| Mounting support | Plate Rail |

Environment

| | |
|--|---|
| Standards | CSA C22.2 No 14 EN 60947-4-1 EN 60947-5-1 IEC 60947-4-1 IEC 60947-5-1 UL 60947-4-1 |
| Product certifications | CCC UL CB Scheme CSA CE UKCA Marine EAC |
| IP degree of protection | IP20 front face conforming to IEC 60529 |
| Protective treatment | TH conforming to IEC 60068-2-30 |
| Climatic withstand | conforming to IACS E10 exposure to damp heat |
| Permissible ambient air temperature around the device | -40...60 °C 60...70 °C with derating |
| Operating altitude | 0...3000 m |
| Fire resistance | 850 °C conforming to IEC 60695-2-1 |
| Flame retardance | V1 conforming to UL 94 |
| Mechanical robustness | Vibrations contactor open (2 Gn, 5...300 Hz) Shocks contactor open (8 Gn for 11 ms) Vibrations contactor closed (3 Gn, 5...300 Hz) Shocks contactor closed (10 Gn for 11 ms) |
| Height | 127 mm |
| Width | 85 mm |
| Depth | 186 mm |
| Net weight | 2.59 kg |

Packing Units

| | |
|-------------------------------------|-----|
| Unit Type of Package 1 | PCE |
| Number of Units in Package 1 | 1 |

| | |
|------------------------------|-----------|
| Package 1 Height | 11.000 cm |
| Package 1 Width | 16.200 cm |
| Package 1 Length | 22.000 cm |
| Package 1 Weight | 2.585 kg |
| Unit Type of Package 2 | S02 |
| Number of Units in Package 2 | 2 |
| Package 2 Height | 15.000 cm |
| Package 2 Width | 30.000 cm |
| Package 2 Length | 40.000 cm |
| Package 2 Weight | 5.466 kg |
| Unit Type of Package 3 | P06 |
| Number of Units in Package 3 | 32 |
| Package 3 Height | 75.000 cm |
| Package 3 Width | 60.000 cm |
| Package 3 Length | 80.000 cm |
| Package 3 Weight | 97.700 kg |

Logistical informations

| | |
|-------------------|----|
| Country of origin | CZ |
|-------------------|----|

Contractual warranty

| | |
|----------------------|----|
| Warranty (in months) | 18 |
|----------------------|----|



Environmental Data

Schneider Electric aims to achieve Net Zero status by 2050 through supply chain partnerships, lower impact materials, and circularity via our ongoing “Use Better, Use Longer, Use Again” campaign to extend product lifetimes and recyclability.

[Environmental Data explained >](#)

[How we assess product sustainability >](#)

Environmental footprint

Total lifecycle Carbon footprint 176

Environmental Disclosure [Product Environmental Profile](#)

Use Better

Materials and Substances

Packaging made with recycled cardboard Yes

Packaging without single use plastic Yes

[EU RoHS Directive](#) Compliant

REACH Regulation [REACH Declaration](#)

PVC free Yes

Use Again

Repack and remanufacture

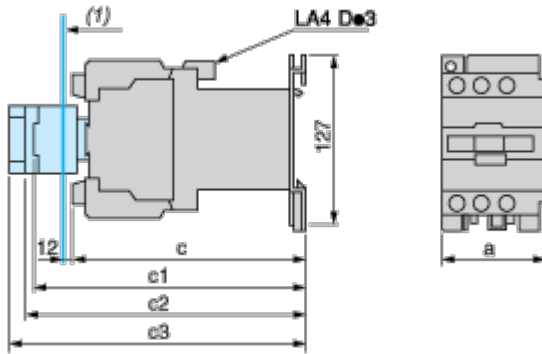
End of life manual availability No need of specific recycling operations

Take-back No

WEEE Label  The product must be disposed on European Union markets following specific waste collection and never end up in rubbish bins

Dimensions Drawings

Dimensions



(1) Minimum electrical clearance

| LC1 | | D80 and D95 |
|-----------|------------------------------------|-------------|
| a | | 85 |
| b1 | with LAD 4BB3 | – |
| | with LA4 DF, DT | – |
| c | without cover or add-on blocks | 181 |
| | with cover, without add-on blocks | 186 |
| c1 | with LAD N (1 contact) | 204 |
| | with LAD N or C (2 or 4 contacts) | 210 |
| c2 | with LA6 DK10 | 221 |
| c3 | with LAD T, R, S | 229 |
| | with LAD T, R, S and sealing cover | 233 |

Connections and Schema

Wiring



Offer Marketing Illustration

Product benefits / Features

TeSys Deca Contactors



Reliable

Multi-standard solutions, high reliability, long mechanical and electrical durability for different sizes, and the most complete accessories.



Energy efficiency

These electronic-coil contactors require up to 80 % less energy than electro-mechanical contactors.



Universal

Multi standards certified (IEC, UL, CSA, CCC, EAC, Marine), Green Premium compliant (RoHS/REACH).



Offer Marketing Illustration

Product benefits / Features



The image shows a TeSys Deca contactor, model LC1D09, which is a three-phase AC contactor. It is a black plastic unit with a green control panel. The top panel has three main terminals labeled 1, 2, and 3. The middle panel has three auxiliary terminals labeled 13 NO, 12 NC, and 14. The bottom panel has three main terminals labeled 4, 5, and 6. The Schneider Electric logo and 'TeSys Deca' branding are visible on the front.

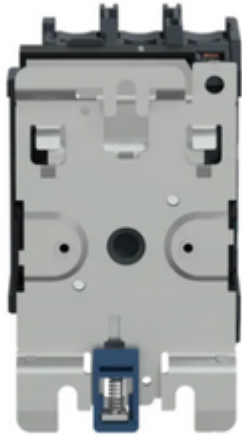
TeSys Deca Contactors

Technical Benefits

- Deca green delivers a consistent low consumption range of contactors from 9 A to 80 A.
- Covers control voltage from 24 to 250 V, with same coils for AC and DC.
- Designed to meet the requirements of industrial and HVAC applications
- With IEC60335-1 compliance, improved fire resistance, and dust-proof auxiliaries
- Suitable for safety applications thanks to mechanically linked contacts and mirror contacts
- Outstanding breaking/making capacity up to 20 In with PLC direct connection

Image of product / Alternate images

Alternative



Technical Illustration

Assembly's dimensions

