

# Product datasheet

Specifications



## Head for non illuminated push button, Harmony XB5, yellow Ø 40 mushroom pushbutton Ø22 mm latching pull

ZB5AT5

! Discontinued

! Discontinued on: 9 Feb 2023

EAN Code: 3389110966336

### Main

|                               |                                      |
|-------------------------------|--------------------------------------|
| Range of product              | Harmony XB5                          |
| Product or component type     | Head for non-illuminated push-button |
| Device short name             | ZB5                                  |
| Bezel material                | Dark grey plastic                    |
| Head type                     | Standard                             |
| Mounting diameter             | 22 mm                                |
| Sale per indivisible quantity | 1                                    |
| Shape of signaling unit head  | Round                                |
| Type of operator              | latching                             |
| Reset                         | Push-pull                            |
| Operator profile              | Yellow mushroom Ø 40 mm, unmarked    |
| Device presentation           | Basic element                        |

### Complementary

|                             |  |
|-----------------------------|--|
| CAD overall width           | 40 mm  |
| CAD overall height          | 40 mm  |
| CAD overall depth           | 56 mm  |
| Mechanical durability       | 300000 cycles  |
| Station name                | XALD 1 cut-out<br>XALK 1 cut-out   |
| Electrical composition code | C11 for <3 contacts using single blocks in front mounting<br>C15 for <1 contacts using single blocks in front mounting<br>SF1 for <3 contacts using single blocks in front mounting<br>SR1 for <3 contacts using single blocks in rear mounting<br>C7 for <4 contacts using single blocks in front mounting<br>C8 for <4 contacts using single and double blocks in front mounting<br>C10 for <4 contacts using single and double blocks in front mounting |
| Compatibility code          | ZB5  |

### Environment

|                                       |             |
|---------------------------------------|-------------|
| Protective treatment                  | TH          |
| Ambient air temperature for storage   | -40...70 °C |
| Ambient air temperature for operation | -40...70 °C |

|   |  |
|---|--|
| <b>Overvoltage category</b>               | Class II conforming to IEC 60536   |
| <b>IP degree of protection</b>            | IP66 conforming to IEC 60529<br>IP67<br>IP69<br>IP69K  |
| <b>NEMA degree of protection</b>          | NEMA 13<br>NEMA 4X   |
| <b>Resistance to high pressure washer</b> | 7000000 Pa at 55 °C, distance : 0.1 m  |
| <b>IK degree of protection</b>            | IK03 conforming to IEC 50102   |
| <b>Standards</b>                          | UL 508<br>IEC 60947-5-4<br>IEC 60947-5-1<br>IEC 60947-1<br>JIS C8201-5-1<br>CSA C22.2 No 14<br>JIS C8201-1   |
| <b>Product certifications</b>             | CSA<br>DNV<br>BV<br>LROS (Lloyds register of shipping)<br>UL listed  |
| <b>Vibration resistance</b>               | 5 gn (f= 2...500 Hz) conforming to IEC 60068-2-6   |
| <b>Shock resistance</b>                   | 30 gn (duration = 18 ms) for half sine wave acceleration conforming to IEC 60068-2-27<br>50 gn (duration = 11 ms) for half sine wave acceleration conforming to IEC 60068-2-27 |

## Packing Units

|                                     |          |
|-------------------------------------|----------|
| <b>Unit Type of Package 1</b>       | PCE      |
| <b>Number of Units in Package 1</b> | 1        |
| <b>Package 1 Height</b>             | 5.400 cm |
| <b>Package 1 Width</b>              | 4.000 cm |
| <b>Package 1 Length</b>             | 8.800 cm |
| <b>Package 1 Weight</b>             | 50.000 g |

## Logistical informations

|                          |    |
|--------------------------|----|
| <b>Country of origin</b> | CZ |
|--------------------------|----|

## Contractual warranty

|                             |    |
|-----------------------------|----|
| <b>Warranty (in months)</b> | 18 |
|-----------------------------|----|

## Environmental Data

Schneider Electric aims to achieve Net Zero status by 2050 through supply chain partnerships, lower impact materials, and circularity via our ongoing “Use Better, Use Longer, Use Again” campaign to extend product lifetimes and recyclability.

[Environmental Data explained >](#)

[How we assess product sustainability >](#)

### Environmental footprint

Total lifecycle Carbon footprint 1

Environmental Disclosure [Product Environmental Profile](#)

## Use Better

### Materials and Substances

Packaging made with recycled cardboard Yes

Packaging without single use plastic Yes

[EU RoHS Directive](#) Pro-active compliance (Product out of EU RoHS legal scope)

REACH Regulation [REACH Declaration](#)

## Use Again

### Repack and remanufacture

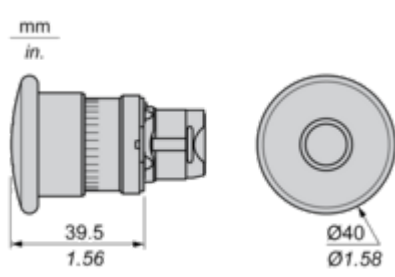
End of life manual availability [End of Life Information](#)

Take-back No

Dimensions Drawings

Dimensions

---



Mounting and Clearance

Panel Cut-out for Pushbuttons, Switches and Pilot Lights (Finished Holes, Ready for Installation)

Connection by Screw Clamp Terminals or Plug-in Connectors or on Printed Circuit Board



- (1) Diameter on finished panel or support
- (2) For selector switches and Emergency stop buttons, use of an anti-rotation plate type ZB5AZ902 is recommended.
- (3)  $\varnothing 22.5$  mm recommended ( $\varnothing 22.3_0^{+0.4}$ ) /  $\varnothing 0.89$  in. recommended ( $\varnothing 0.88_0^{+0.016}$ )

| Connections                                   | a in mm | a in in. | b in mm | b in in. |
|---|---------|----------|---------|----------|
| By screw clamp terminals or plug-in connector | 40      | 1.57     | 30      | 1.18     |
| By Faston connectors                          | 45      | 1.77     | 32      | 1.26     |
| On printed circuit board                      | 30      | 1.18     | 30      | 1.18     |

Detail of Lug Recess



- (1) Diameter on finished panel or support
- (2) For selector switches and Emergency stop buttons, use of an anti-rotation plate type ZB5AZ902 is recommended.
- (3)  $\varnothing 22.5$  mm recommended ( $\varnothing 22.3_0^{+0.4}$ ) /  $\varnothing 0.89$  in. recommended ( $\varnothing 0.88_0^{+0.016}$ )





A: 1.18 in. min.  
 B: 1.57 in. min.

**General Tolerances of the Panel and Printed Circuit Board**

The cumulative tolerance must not exceed 0.3 mm / 0.012 in.: T1 + T2 = 0.3 mm max.

**Installation Precautions**

- Minimum thickness of circuit board: 1.6 mm / 0.06 in.
- Cut-out diameter: 22.4 mm ± 0.1 / 0.88 in. ± 0.004
- Orientation of body/fixing collar ZB5AZ009: ± 2° 30' (excluding cut-outs marked a and b).
- Tightening torque of screws ZBZ006: 0.6 N.m (5.3 lbf.in) max.
- Allow for one ZB5AZ079 fixing collar/pillar and its fixing screws:
  - every 90 mm / 3.54 in. horizontally (X), and 120 mm / 4.72 in. vertically (Y).
  - with each selector switch head (ZB5AD\*, ZB5AJ\*, ZB5AG\*).

The fixing centers marked a and b are diagonally opposed and must align with those marked 4 and 5.



- (1) Head ZB5AD•
- (2) Panel
- (2) Nut
- (4) Printed circuit board

## Mounting of Adapter (Socket) ZBZ01•

- 1 2 elongated holes for ZBZ006 screw access
- 2 1 hole  $\varnothing$  2.4 mm  $\pm$  0.05 / 0.09 in.  $\pm$  0.002 for centring adapter ZBZ01•
- 3 8  $\times$   $\varnothing$  1.2 mm / 0.05 in. holes
- 4 1 hole  $\varnothing$  2.9 mm  $\pm$  0.05 / 0.11 in.  $\pm$  0.002, for aligning the printed circuit board (with cut-out marked **a**)
- 5 1 elongated hole for aligning the printed circuit board (with cut-out marked **b**)
- 6 4 holes  $\varnothing$  2.4 mm / 0.09 in. for clipping in adapter ZBZ01•

Dimensions An + 18.1 relate to the  $\varnothing$  2.4 mm  $\pm$  0.05 / 0.09 in.  $\pm$  0.002 holes for centring adapter ZBZ01•.

Technical Description

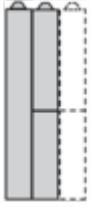
Electrical Composition Corresponding to Code C7

---



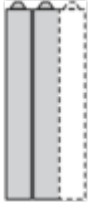
Electrical Compositions Corresponding to Code C8

---

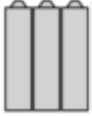


Electrical Compositions Corresponding to Code C10

---



Electrical Composition Corresponding to Codes C9, C11, SF1 and SR1



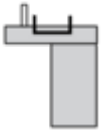
Electrical Composition Corresponding to Code C15

---

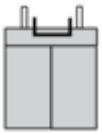
1 N/O



1 N/C



1 N/O + N/C or 1 N/O + N/O or 1 N/C + N/C



**Legend**

---

Single contact



Double contact



Light block

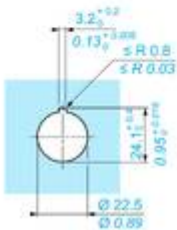
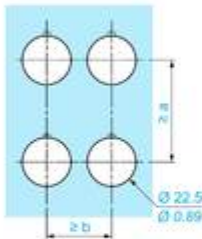
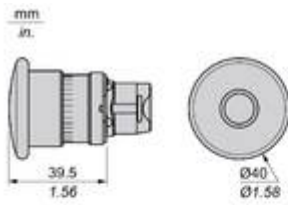


Possible location



Technical Illustration

Dimensions



|           |           | a (mm) | a (in.) | b (mm) | b (in.) |
|-----------|-----------|--------|---------|--------|---------|
|           |           | 40     | 1.57    | 30     | 1.18    |
| ZBE.....  | ZBV.....  |        |         |        |         |
|           |           | 45     | 1.77    | 32     | 1.26    |
| ZBE.....3 | ZBV.....3 |        |         |        |         |
|           |           | 40     | 1.57    | 30     | 1.18    |
| ZBE.....4 | ZBV.....4 |        |         |        |         |
|           |           | 50     | 1.97    | 30     | 1.18    |
| ZBE.....5 | ZBV.....5 |        |         |        |         |
|           |           | 40     | 1.57    | 30     | 1.18    |
| ZBE.....9 | ZBV.....9 |        |         |        |         |
|           |           | 40     | 1.57    | 30     | 1.18    |
| ZBRT..    | ZBRV1     |        |         |        |         |