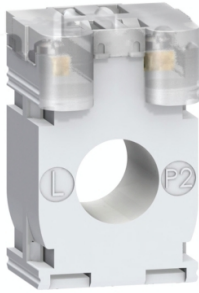


Product datasheet

Specifications



current transformer tropicalised DIN mount 125 5 for cables d. 21

Local distributor code:
397544075

METSECT5CC013

EAN Code: 3303431123445

Main

Range	PowerLogic
Product name	CT
Product or component type	Current transformer
Secondary current	5 A
Accuracy class	Class 0.5 at 2.5 VA Class 1 at 3.5 VA Class 3 at 4 VA
[In] rated current	125 A

Complementary

Current transformer type	Tropicalised for cable Solid core
Current transformer ratio	125/5
[Ith] conventional free air thermal current	7.5 kA
Dynamic withstand current	2.5 Ith
Maximum safety factor	5
[Ue] rated operational voltage	< 720 V AC 50/60 Hz
[Ui] rated insulation voltage	3 kV
Mounting mode	By screws Clip-on
Mounting support	DIN rail Mounting plate
Width	Outside: 44 mm
Height	Outside: 65 mm
Depth	Frame : 30 mm Total : 37 mm
Diameter	21 mm
Net weight	0.175 kg
[Uimp] rated impulse withstand voltage	3 kV
Electrical insulation class	Class B
Cable outer diameter	21 mm
Sealing	With

Environment

Standards	VDE 0414 IEC 61869-2
Product certifications	EAC CE
IP degree of protection	IP20
Relative humidity	0...95 %
Ambient air temperature for operation	-25...60 °C

Packing Units

Unit Type of Package 1	PCE
Number of Units in Package 1	1
Package 1 Height	5.500 cm
Package 1 Width	5.500 cm
Package 1 Length	8.200 cm
Package 1 Weight	170.400 g
Unit Type of Package 2	S02
Number of Units in Package 2	50
Package 2 Height	15.000 cm
Package 2 Width	30.000 cm
Package 2 Length	40.000 cm
Package 2 Weight	8.820 kg

Logistical informations

Country of origin	TN
--------------------------	----

Contractual warranty

Warranty (in months)	18
-----------------------------	----

Environmental Data

Schneider Electric aims to achieve Net Zero status by 2050 through supply chain partnerships, lower impact materials, and circularity via our ongoing “Use Better, Use Longer, Use Again” campaign to extend product lifetimes and recyclability.

[Environmental Data explained >](#)

[How we assess product sustainability >](#)

Environmental footprint

Total lifecycle Carbon footprint 19

Environmental Disclosure [Product Environmental Profile](#)

Use Better

Materials and Substances

Packaging made with recycled cardboard No

Packaging without single use plastic No

[EU RoHS Directive](#) Compliant with Exemptions

SCIP Number Cff808d6-5d51-48cc-84b9-1e988cc717ac

REACH Regulation [REACH Declaration](#)

Use Again

Repack and remanufacture

End of life manual availability [End of Life Information](#)

Take-back No

WEEE Label  The product must be disposed on European Union markets following specific waste collection and never end up in rubbish bins