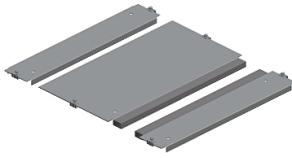


Product datasheet

Specifications



"One entry cable gland plate,
PanelSeT SFN, PanelSet SF, for
electrical enclosure W700 D600mm,
fixed by clips"

NSYEC761

EAN Code: 3606480211492

Main

Range	PanelSeT
Product or component type	Cable gland plate
Accessory / separate part category	Cable management accessory
Application	Prisma application Multi-purpose
Range compatibility	Prisma Prisma PH PanelSeT PanelSeT SFP SFP
Mounting location	Enclosure bottom
Cable gland type	Standard
Cable entry	1 entry
Device composition	fixing elements 1 plate polyurethane adhesive gasket with cross-section of 15 x 25 mm
Quantity per set	Set of 1
Material	Galvanised steel

Complementary

Width	Nominal: 700 mm Useful: 516 mm
Depth	Nominal : 600 mm
Thickness	1.5 mm

Packing Units

Unit Type of Package 1	PCE
Number of Units in Package 1	1
Package 1 Height	55.000 cm
Package 1 Width	34.500 cm
Package 1 Length	3.000 cm
Package 1 Weight	3.898 kg
Unit Type of Package 2	PAM
Number of Units in Package 2	40
Package 2 Height	45.000 cm
Package 2 Width	100.000 cm

Package 2 Length	120.000 cm
------------------	------------

Package 2 Weight	169.000 kg
------------------	------------

Logistical informations

Country of origin	FR
-------------------	----

Contractual warranty

Warranty (in months)	18
----------------------	----



Environmental Data

Schneider Electric aims to achieve Net Zero status by 2050 through supply chain partnerships, lower impact materials, and circularity via our ongoing “Use Better, Use Longer, Use Again” campaign to extend product lifetimes and recyclability.

[Environmental Data explained >](#)

[How we assess product sustainability >](#)

Environmental footprint

Total lifecycle Carbon footprint 28

Environmental Disclosure [Product Environmental Profile](#)

Use Better

Materials and Substances

Packaging made with recycled cardboard No

Packaging without single use plastic No

[EU RoHS Directive](#) Pro-active compliance (Product out of EU RoHS legal scope)

SCIP Number 52da316e-d4e1-4114-85c0-32a03b2934fd

REACH Regulation [REACH Declaration](#)

Use Again

Repack and remanufacture

End of life manual availability No need of specific recycling operations

Take-back No