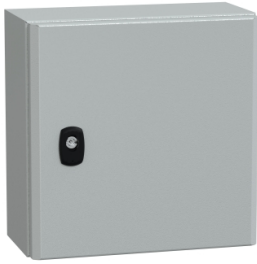


# Product datasheet

Specifications



"Wall mounted steel enclosure,  
PanelSeT S3D, plain door, with  
mounting plate, 300x300x150mm,  
IP66, IK10"

Local distributor code:  
392865937

NSYS3D3315P

EAN Code: 3606480159749

## Main

Range	PanelSeT
Product name	PanelSeT S3D
Application	Multi-purpose
Category	Compact enclosure
Enclosure nominal height	300 mm
Enclosure nominal width	300 mm
Enclosure nominal depth	150 mm
Door type	Plain
Mounting plate description	Plain
Type of gland plate	Standard
Installation accessory type	Wall-mounting
Device composition	1 body 1 mounting plate 1 door with lock 1 cable gland plate

## Complementary

body type	Single piece body Gutter-shaped front rail double sheet thickness
Number of doors	Front face: 1 door(s)
Door opening side	Reversible (120 °)
Lock type	3 mm double-bar lock
Accessibility for operation	Front
Removable parts	Door by hinges Cable gland plate by screws Mounting plate by fixing element
Material	Enclosure: steel Mounting plate: galvanised steel
Surface finish	Enclosure: epoxy-polyester powder
Colour	Enclosure: grey (RAL 7035)
Standards	IEC 62208 UL CUL

Disclaimer: This documentation is not intended as a substitute for and is not to be used for determining suitability or reliability of these products for specific user applications

<b>Product certifications</b>	cUL UL BV GL DNV
<b>Net weight</b>	4.84 kg

## Environment

<b>NEMA degree of protection</b>	NEMA 4X/13
<b>IK degree of protection</b>	IK10 conforming to IEC 62262
<b>IP degree of protection</b>	IP66 conforming to IEC 60529

## Packing Units

<b>Unit Type of Package 1</b>	PCE
<b>Number of Units in Package 1</b>	1
<b>Package 1 Height</b>	20.000 cm
<b>Package 1 Width</b>	31.000 cm
<b>Package 1 Length</b>	32.000 cm
<b>Package 1 Weight</b>	4.900 kg
<b>Unit Type of Package 2</b>	PAM
<b>Number of Units in Package 2</b>	90
<b>Package 2 Height</b>	208.000 cm
<b>Package 2 Width</b>	100.000 cm
<b>Package 2 Length</b>	120.000 cm
<b>Package 2 Weight</b>	453.000 kg

## Logistical informations

<b>Country of origin</b>	FR
--------------------------	----

## Contractual warranty

<b>Warranty (in months)</b>	18
-----------------------------	----

## Environmental Data

Schneider Electric aims to achieve Net Zero status by 2050 through supply chain partnerships, lower impact materials, and circularity via our ongoing “Use Better, Use Longer, Use Again” campaign to extend product lifetimes and recyclability.

[Environmental Data explained >](#)

[How we assess product sustainability >](#)

### Environmental footprint

Total lifecycle Carbon footprint 46

Environmental Disclosure [Product Environmental Profile](#)

## Use Better

### Materials and Substances

Packaging made with recycled cardboard No

Packaging without single use plastic No

[EU RoHS Directive](#) Pro-active compliance (Product out of EU RoHS legal scope)

SCIP Number E893f0a0-d2cc-4011-9425-3873dde70142

REACH Regulation [REACH Declaration](#)

## Use Again

### Repack and remanufacture

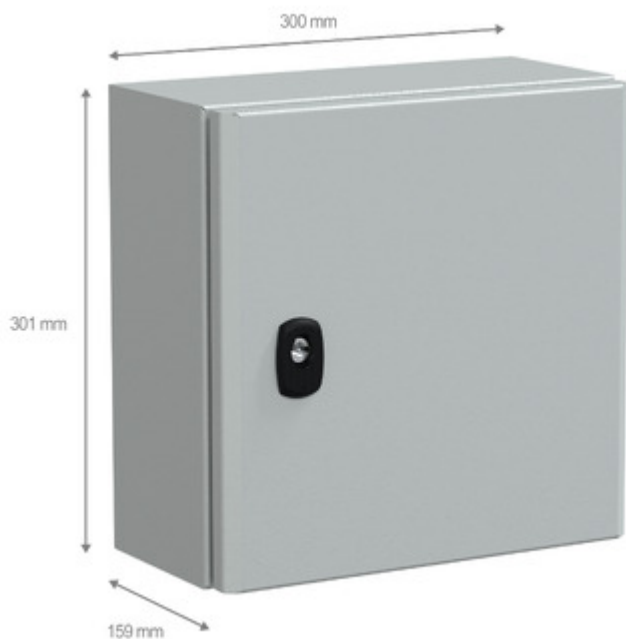
End of life manual availability No need of specific recycling operations

Take-back No

Technical Illustration

Dimensions

---



Offer Marketing Illustration

Product benefits / Features

---



Sturdy components' protection

Earthing studs included

Large choice of dimensions & accessories

Quality & aesthetics

Easy to equip  
Easy to maintain

Reusable eco-friendly packaging