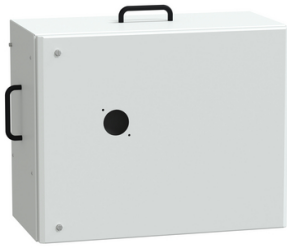


# Product datasheet

Specifications



## TAP OFF UNIT 250A COMPACT NS

KSB250DC5

EAN Code: 3606480005763

### Main

Range of product	Canalis
Range compatibility	Canalis KS busbar trunking Canalis KT busbar trunking
Offer type	Classic
Product or component type	Tap-off unit
[Ie] rated operational current	250 A at 35 °C
Protection type	Circuit breaker: Compact NSX250
Provided equipment	circuit-breaker to be ordered separately
Mounting mode	Plate with fixed polarity
Tap-off unit polarity	3L+PEN
Colour	White (RAL 9001)

### Complementary

Device application	Medium power distribution
[Ue] rated operational voltage	400 V depending on protective device 500 V depending on protective device
[Uimp] rated impulse withstand voltage	6.8 kV
[Ui] rated insulation voltage	400 V depending on protective device 500 V depending on protective device
Network frequency	50/60 Hz
Control type	Extended rotary handle
Electrical connection	Crimp lug - ISO40 150 mm <sup>2</sup> flexible Crimp lug - ISO40 150 mm <sup>2</sup> rigid
door/cover opening side	Right
Tap-off unit disconnection mode	By opening the door
Number of openings	1 opening for FL21 gland plate
Standards	IEC 61439-6 IEC 61439-1
Body material	Metal
Width	500 mm
Depth	300 mm
depth (door open)	726.5 mm
Height	400 mm

---

Net weight	12.5 kg
------------	---------

## Environment

---

Earthing system	TN-C
-----------------	------

---

IP degree of protection	IP55 conforming to IEC 60529
-------------------------	------------------------------

---

IK degree of protection	IK08 conforming to IEC 62262
-------------------------	------------------------------

## Packing Units

---

Unit Type of Package 1	PCE
------------------------	-----

---

Number of Units in Package 1	1
------------------------------	---

---

Package 1 Height	33.5 cm
------------------	---------

---

Package 1 Width	45.5 cm
-----------------	---------

---

Package 1 Length	55.0 cm
------------------	---------

---

Package 1 Weight	13.248 kg
------------------	-----------

---

Unit Type of Package 2	P12
------------------------	-----

---

Number of Units in Package 2	4
------------------------------	---

---

Package 2 Height	83.0 cm
------------------	---------

---

Package 2 Width	80.0 cm
-----------------	---------

---

Package 2 Length	120.0 cm
------------------	----------

---

Package 2 Weight	86.0 kg
------------------	---------

## Logistical informations

---

Country of origin	FR
-------------------	----

## Contractual warranty

---

Warranty (in months)	18
----------------------	----




## Environmental Data

Schneider Electric aims to achieve Net Zero status by 2050 through supply chain partnerships, lower impact materials, and circularity via our ongoing “Use Better, Use Longer, Use Again” campaign to extend product lifetimes and recyclability.



[Environmental Data explained >](#)

[How we assess product sustainability >](#)

### Use Better

 <b>Materials and Substances</b>	
Packaging made with recycled cardboard	Yes
Packaging without single use plastic	Yes
<a href="#">EU RoHS Directive</a>	Compliant with Exemptions
SCIP Number	Fbe82b7c-542c-4391-913a-58c8f489ca40
REACH Regulation	<a href="#">REACH Declaration</a>
Halogen-free status	Halogen free product
PVC free	Yes
Silicone-free	Yes

### Use Again

 <b>Repack and remanufacture</b>	
End of life manual availability	No need of specific recycling operations
Take-back	No
WEEE Label	 The product must be disposed on European Union markets following specific waste collection and never end up in rubbish bins