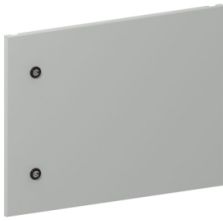


# Product datasheet

Specifications



## "PanelSet SFM plain partial door - 450x600 mm - 9M"

NSYMPD9M6

EAN Code: 3606480850189

### Main

Range	PanelSeT
Accessory / separate part category	Enclosure accessory
Product or component type	Partial door
Application	Compartmentalised application
For enclosure nominal dimensions	- W: 600 mm
Total number of 50 mm modules	9
Mounting location	Front
Range compatibility	PanelSeT SFM
Device composition	1 partial door 2 hinges 1 5 mm double bar insert
Quantity per set	Set of 1

### Complementary

Material	Steel
Colour	Grey (RAL 7035)
Surface finish	Epoxy-polyester powder
Lock type	Lock 5 mm double bar
Number of locks	1
Door type	External plain
Door opening side	Reversible (120 °)
Height	Nominal: 450 mm
Width	Nominal: 600 mm

### Packing Units

Unit Type of Package 1	PCE
Number of Units in Package 1	1
Package 1 Height	58.000 cm
Package 1 Width	46.000 cm
Package 1 Length	6.000 cm
Package 1 Weight	5.230 kg
Unit Type of Package 2	P12

---

<b>Number of Units in Package 2</b>	18
<b>Package 2 Height</b>	64.000 cm
<b>Package 2 Width</b>	80.000 cm
<b>Package 2 Length</b>	120.000 cm
<b>Package 2 Weight</b>	105.000 kg

---

## Logistical informations

---

<b>Country of origin</b>	FR
--------------------------	----

## Contractual warranty

---

<b>Warranty (in months)</b>	18
-----------------------------	----

## Environmental Data

Schneider Electric aims to achieve Net Zero status by 2050 through supply chain partnerships, lower impact materials, and circularity via our ongoing “Use Better, Use Longer, Use Again” campaign to extend product lifetimes and recyclability.

[Environmental Data explained >](#)

[How we assess product sustainability >](#)

### Environmental footprint

[Environmental Disclosure](#)

[Product Environmental Profile](#)

## Use Better

### Materials and Substances

Packaging made with recycled cardboard

No

Packaging without single use plastic

No

[EU RoHS Directive](#)

Pro-active compliance (Product out of EU RoHS legal scope)

SCIP Number

52da316e-d4e1-4114-85c0-32a03b2934fd

REACH Regulation

[REACH Declaration](#)

## Use Again

### Repack and remanufacture

End of life manual availability

No need of specific recycling operations

Take-back

No