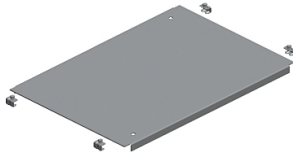


Product datasheet

Specifications



"Plain cable gland plate, PanelSeT SFN, PanelSet SF, for electrical enclosure W600 D600mm, fixed by clips"

Local distributor code:
13313014

NSYEC66

EAN Code: 3606485126012

Main

Range	PanelSeT
Product or component type	Cable gland plate
Accessory / separate part category	Cable management accessory
Application	Electronic application Multi-purpose
Range compatibility	PanelSeT PanelSeT SF SF PanelSeT PanelSeT SFM SFM
Mounting location	Enclosure bottom
Cable gland type	Standard
Cable entry	Plain
Device composition	fixing elements 1 plate
Quantity per set	Set of 1
Material	Galvanised steel

Complementary

Height	30 mm
Width	Nominal: 600 mm Useful: 416 mm
Depth	Nominal : 600 mm Real : 515 mm
Thickness	1.5 mm

Packing Units

Unit Type of Package 1	PCE
Number of Units in Package 1	1
Package 1 Height	3.000 cm
Package 1 Width	45.500 cm
Package 1 Length	52.000 cm
Package 1 Weight	3.120 kg
Unit Type of Package 2	P12
Number of Units in Package 2	30
Package 2 Height	71.000 cm

Package 2 Width	80.000 cm
Package 2 Length	120.000 cm
Package 2 Weight	104.000 kg

Logistical informations

Country of origin	FR
-------------------	----

Contractual warranty

Warranty (in months)	18
----------------------	----

Environmental Data

Schneider Electric aims to achieve Net Zero status by 2050 through supply chain partnerships, lower impact materials, and circularity via our ongoing "Use Better, Use Longer, Use Again" campaign to extend product lifetimes and recyclability.

[Environmental Data explained >](#)

[How we assess product sustainability >](#)

Environmental footprint

Total lifecycle Carbon footprint 22

Environmental Disclosure [Product Environmental Profile](#)

Use Better

Materials and Substances

Packaging made with recycled cardboard No

Packaging without single use plastic No

[EU RoHS Directive](#) Pro-active compliance (Product out of EU RoHS legal scope)

SCIP Number 52da316e-d4e1-4114-85c0-32a03b2934fd

REACH Regulation [REACH Declaration](#)

Use Again

Repack and remanufacture

End of life manual availability No need of specific recycling operations

Take-back No