

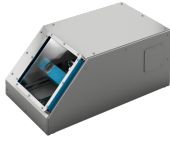
# PAIS-E2H0

Pallet Integrity Inspection System

QUALITY CONTROL SYSTEMS

**SICK**  
Sensor Intelligence.

### Ordering information



| Type      | part no. |
|-----------|----------|
| PAIS-E2H0 | 1144856  |

Other models and accessories → [www.sick.com/Pallet\\_Integrity\\_Inspection\\_System](http://www.sick.com/Pallet_Integrity_Inspection_System)

### Detailed technical data

#### Features

|                          |   |
|--------------------------|---|
| <b>Variant</b>           | Bottom-only   |
| <b>Technology</b>        | 3D laser triangulation  |
| <b>System features</b>   | Protective housing for use in challenging environments<br>Inspection of bottom side of the loaded pallet                            |
| <b>Laser class</b>       | 2M (EN 60825-1:2014+A11:2021; IEC 60825-1:2014)   |
| <b>Laser color</b>       | Red, visible, 660 nm, ± 10 nm   |
| <b>Supported pallets</b> | 2 default pallet types: Euro-pallet 1200x800 mmUK / Industrial Pallet 1200x1000 mmPlus<br>possibility to create custom pallet types |

#### Mechanics/electronics

|                                       |  |
|---------------------------------------|--|
| <b>Dimensions, system (L x W x H)</b> | 722 mm x 461 mm x 306 mm (PAIS system)<br>665 mm x 356 mm x 786 mm (Control cabinet)   |
| <b>Enclosure rating</b>               | Electrical cabinet: IP54<br>Integrated components of scanning units: IP65/IP67<br>Scanning units enclosure: IP30 <sup>1)</sup> |
| <b>Supply voltage</b>                 | 230 V AC <sup>2)</sup>   |
| <b>Current consumption</b>            | 0.6 A, rated current<br>1.5 A, peak current  |
| <b>Power consumption</b>              | 140 W, rated power<br>345 W, peak power  |
| <b>Window material</b>                | Glass  |
| <b>Housing material</b>               | Stainless steel  |
| <b>Weight</b>                         | 35 kg, single system<br>55 kg, Control cabinet<br>5.4 kg, Cables   |

<sup>1)</sup> If cable holes are covered, otherwise IP10.

<sup>2)</sup> 50 Hz.

#### Performance

|                                  |                 |
|----------------------------------|-----------------|
| <b>Typical object speed</b>      | 0.5 m/s         |
| <b>3D profile resolution</b>     | Up to 0.6 mm/px |
| <b>Minimum detectable defect</b> | > 3 mm          |
| <b>Typical evaluation time</b>   | Approx. 1.5 s   |

Interfaces

|                                |   |
|--------------------------------|---|
| <b>Ethernet</b>                |   |
| Function                       | Service interface   |
| Data transmission rate         | 1,000 Mbit/s  |
| <b>Encoder interface</b>       | RS-422 / TTL (DBS36E-BBCP02048)   |
| <b>Configuration interface</b> | Web-Interface   |
| <b>Connection type</b>         | Wire terminals, conductors up to 2,5 mm <sup>2</sup> (for the power supply) |
| <b>Digital inputs</b>          | 3 (isolated)  |
| <b>Digital outputs</b>         | 2 (isolated)  |

Ambient data

|  |  |
|--|--|
| <b>Ambient temperature, operation</b>      | 0 °C ... +40 °C                                  |
| <b>Ambient temperature, storage</b>        | -10 °C ... +50 °C                                |
| <b>Permissible relative humidity</b>       | 5% ... 85 %, Non-condensing                      |
| <b>Electromagnetic compatibility (EMC)</b> | EN 61000-6-2:2005+AC:2005, EN IEC 61000-6-2:2019 |

General notes

|                       |  |
|-----------------------|--|
| <b>Items supplied</b> | 2x bottom-only variant with stainless-steel housing<br>1x electrical cabinet |
|-----------------------|--|

Classifications

|                       |          |
|-----------------------|----------|
| <b>ECLASS 5.0</b>     | 27281001 |
| <b>ECLASS 5.1.4</b>   | 27289090 |
| <b>ECLASS 6.0</b>     | 27289090 |
| <b>ECLASS 6.2</b>     | 27289090 |
| <b>ECLASS 7.0</b>     | 27289090 |
| <b>ECLASS 8.0</b>     | 27289090 |
| <b>ECLASS 8.1</b>     | 27289090 |
| <b>ECLASS 9.0</b>     | 27289090 |
| <b>ECLASS 10.0</b>    | 27289090 |
| <b>ECLASS 11.0</b>    | 27289090 |
| <b>UNSPSC 16.0901</b> | 52161523 |

## SICK AT A GLANCE

SICK is one of the leading manufacturers of intelligent sensors and sensor solutions for industrial applications. A unique range of products and services creates the perfect basis for controlling processes securely and efficiently, protecting individuals from accidents and preventing damage to the environment.

We have extensive experience in a wide range of industries and understand their processes and requirements. With intelligent sensors, we can deliver exactly what our customers need. In application centers in Europe, Asia and North America, system solutions are tested and optimized in accordance with customer specifications. All this makes us a reliable supplier and development partner.

Comprehensive services complete our offering: SICK LifeTime Services provide support throughout the machine life cycle and ensure safety and productivity.

For us, that is “Sensor Intelligence.”

## WORLDWIDE PRESENCE:

Contacts and other locations –[www.sick.com](http://www.sick.com)