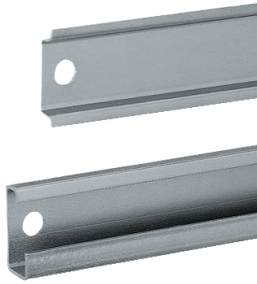


Product datasheet

Specifications



One symmetric mounting rail 35x15 L500mm type A - Wall mounting - Supply: 20

Local distributor code:

398253284

NSYSDR50A

EAN Code: 3606480184376

Main

Anwendung	Multi-purpose
Range	PanelSeT
Product or component type	Rail
Accessory / separate part category	Mounting accessory
Type of rail	Symmetrical DIN
Enclosure nominal dimensions	-
Range compatibility	PanelSeT CRN PanelSeT S3D PanelSeT PLM
Device composition	fixing elements 1 rail
Quantity per set	Set of 20

Complementary

Material	Zinc coated steel
Surface finish	Zinc coated
Fixing mode	By fixing element - structure of enclosure location
Adjustment	Continuous adjustment Pitch 25 mm
Length	Nominal: 500 mm Real: 450 mm
Height	Nominal: 15 mm
Width	Nominal: 35 mm
Thickness	1.5 mm

Packing Units

Unit Type of Package 1	PCE
Number of Units in Package 1	1
Package 1 Height	4.000 cm
Package 1 Width	9.000 cm
Package 1 Length	4.500 cm
Package 1 Weight	318.000 g
Unit Type of Package 2	CAR
Number of Units in Package 2	10

Package 2 Height	4.000 cm
Package 2 Width	9.000 cm
Package 2 Length	45.000 cm
Package 2 Weight	3.188 kg
Unit Type of Package 3	PAL
Number of Units in Package 3	150
Package 3 Height	29.000 cm
Package 3 Width	37.500 cm
Package 3 Length	120.000 cm
Package 3 Weight	47.820 kg

Logistical informations

Country of origin	FR
-------------------	----

Contractual warranty

Warranty (in months)	18
----------------------	----

Environmental Data

Schneider Electric aims to achieve Net Zero status by 2050 through supply chain partnerships, lower impact materials, and circularity via our ongoing "Use Better, Use Longer, Use Again" campaign to extend product lifetimes and recyclability.

[Environmental Data explained >](#)

[How we assess product sustainability >](#)

Environmental footprint

[Environmental Disclosure](#)

[Product Environmental Profile](#)

Use Better

Materials and Substances

Packaging made with recycled cardboard

No

Packaging without single use plastic

No

[EU RoHS Directive](#)

Pro-active compliance (Product out of EU RoHS legal scope)

REACH Regulation

[REACH Declaration](#)

Use Again

Repack and remanufacture

End of life manual availability

No need of specific recycling operations

Take-back

No