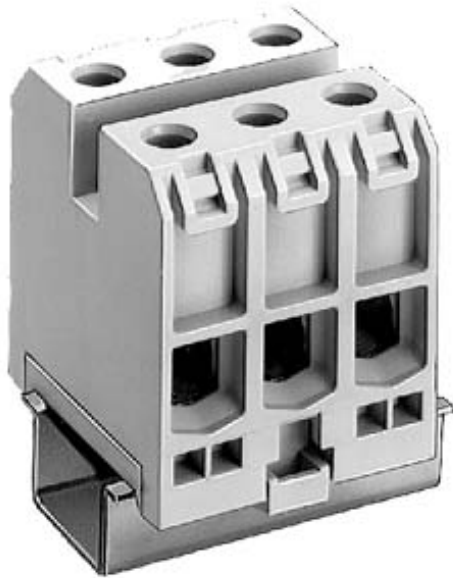







THROUGH-TYPE TERMINAL THERMOPL. SCREW TERMINAL ON BOTH ENDS BLOCK 3 TERMINALS 48MM, SZ 35



Model	
Design of terminal / Terminal levels internally linked	No
General technical data	
Terminal contact spacing	16 mm
Protection class	
Combustibility class acc. to UL 94	V2
Main circuit	
Operating voltage / rated value	800 V
Operating current / rated value	125 A
Appearance	
Color	beige
Product details	
Product component / required / connection plate	No
Number	
Number of terminal levels	1
Number of terminal points / per terminal level	2

Connections	
Connectable conductor cross-section / stranded	
<ul style="list-style-type: none"> • minimum • maximum 	10 mm ² 35 mm ²
Wire stripping length	17 mm
Connectable conductor cross-section	
<ul style="list-style-type: none"> • solid <ul style="list-style-type: none"> — minimum — maximum • finely stranded <ul style="list-style-type: none"> — with core end processing / minimum — with core end processing / maximum — without core end processing / minimum — without core end processing / maximum 	4 mm ² 35 mm ² 6 mm ² 35 mm ² 6 mm ² 35 mm ²
Tightening torque / with screw-type terminals	
<ul style="list-style-type: none"> • minimum • maximum 	2.5 N·m 2.5 N·m
Type of electrical connection	
<ul style="list-style-type: none"> • 1 • 2 	screw-type terminal screw-type terminal
Position / of the terminal	lateral
Mechanical Design	
Height / with lowest-profile installation	26 mm
Length	53 mm
Mounting type	DIN rail 35 mm
Net weight	191 g
Material / of the insulating body	Thermoplast
Environmental conditions	
Ambient temperature	
<ul style="list-style-type: none"> • during operation / minimum • during operation / maximum 	-25 °C 55 °C
Certificates	
Design tested acc. to type of protection / EEx e	No

General Product Approval	Declaration of Conformity	Test Certificates	Shipping Approval
 CSA	 UL	 EAC	 EG-Konf.
		sonstig	 BUREAU VERITAS

Shipping Approval	other



[Umweltbestätigung](#)

Further information

Information- and Downloadcenter (Catalogs, Brochures,...)

<http://www.siemens.com/lowvoltage/catalogs>

Industry Mall (Online ordering system)

<https://eb.automation.siemens.com/mall/en/WW/Catalog/Product/8WA1305>

Service&Support (Manuals, Certificates, Characteristics, FAQs,...)

<http://support.automation.siemens.com/WW/view/en/8WA1305/all>

Image database (product images, 2D dimension drawings, 3D models, device circuit diagrams, ...)

http://www.automation.siemens.com/bilddb/cax_en.aspx?mfb=8WA1305

CAX-Online-Generator

<http://www.siemens.com/cax>

Tender specifications

<http://www.siemens.com/specifications>