

RC-12P1N1280EP - Cable connector



1597017

<https://www.phoenixcontact.com/gb/products/1597017>

Please be informed that the data shown in this PDF document is generated from our online catalog. Please find the complete data in the user documentation. Our general terms of use for downloads are valid.



M23, Cable connector, straight, Screw locking mechanism, No. of pos.: 12, Direction of rotation: Standard, contact connection type: Pin, Solder cup, cable diameter range: 3 mm ... 10.5 mm, coding: N. This product is in the process of being discontinued. This product must no longer be considered for new projects. Please contact your sales representative for alternatives.

Commercial data

| | |
|--------------------------------------|---------------|
| Item number | 1597017 |
| Packing unit | 20 pc |
| Minimum order quantity | 20 pc |
| Sales key | ABRAFA |
| Product key | ABRAFA |
| GTIN | 4046356213950 |
| Weight per piece (including packing) | 77.655 g |
| Weight per piece (excluding packing) | 72.293 g |
| Customs tariff number | 85366990 |
| Country of origin | DE |

RC-12P1N1280EP - Cable connector



1597017

<https://www.phoenixcontact.com/gb/products/1597017>

Technical data

Connector

Insulating body

| | |
|--|---|
| Coding | N |
| Material (Insulating body) | PBT |
| Material (Contact) | CuZn |
| Material (Contact surface) | Ni/Au |
| Insertion/withdrawal cycles | 100 |
| Connection method | Solder cup |
| Contact switching type | Pin |
| Application | Signal |
| Number of positions | 12 |
| Direction of rotation | Standard |
| Connection profile | 12 |
| Number Contact (Contact group 1) | 12 |
| Diameter Contact (Contact group 1) | 1 mm |
| Litz wire cross-section min. Contact (Contact group 1) | 0.08 mm ² |
| Litz wire cross-section max. Contact (Contact group 1) | 1 mm ² |
| Rated current Contact (Contact group 1) | 8 A (for max. connection cross section) |
| Rated voltage Contact (Contact group 1) | 48 V AC 74 V DC |
| Rated surge voltage | 1.5 kV |
| Overvoltage category | III |
| Degree of pollution | 3 |

Housing

| | |
|-----------------------------------|----------------------------------|
| Note | Order contact inserts separately |
| Type | Cable connector housing |
| Thread type | M23 |
| Design | straight |
| Type of locking | Screw locking mechanism |
| Pg screw connection | none |
| Material (Housing) | Metal |
| Degree of protection (plugged in) | IP65 IP67 IP68 |

Seal

| | |
|-------------------------|------------------|
| External cable diameter | 3 mm ... 10.5 mm |
| Seal material | NBR |

RC-12P1N1280EP - Cable connector



1597017

<https://www.phoenixcontact.com/gb/products/1597017>

Drawings

Schematic diagram



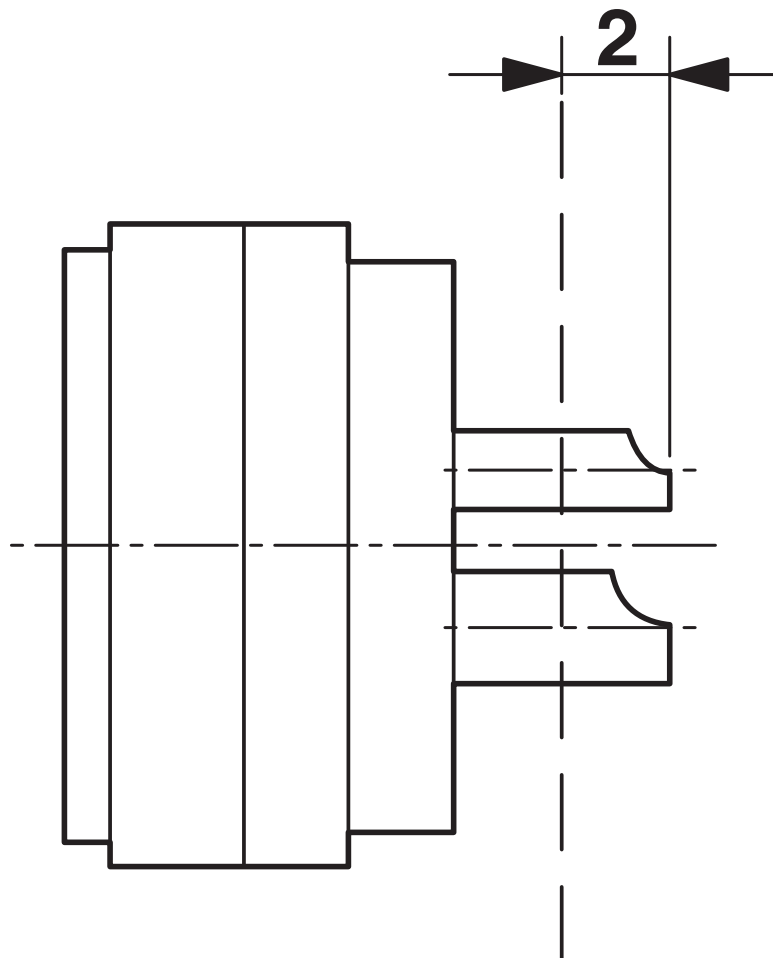
Connector pin assignment

RC-12P1N1280EP - Cable connector

1597017

<https://www.phoenixcontact.com/gb/products/1597017>

Schematic diagram



Dimensional drawing

RC-12P1N1280EP - Cable connector



1597017

<https://www.phoenixcontact.com/gb/products/1597017>

Classifications

ECLASS

| | |
|-------------|----------|
| ECLASS-13.0 | 27440116 |
| ECLASS-15.0 | 27440116 |

ETIM

| | |
|-----------|----------|
| ETIM 10.0 | EC002635 |
|-----------|----------|

UNSPSC

| | |
|-------------|----------|
| UNSPSC 21.0 | 39121400 |
|-------------|----------|

RC-12P1N1280EP - Cable connector



1597017

<https://www.phoenixcontact.com/gb/products/1597017>

Environmental product compliance

EU RoHS

| | |
|---|------|
| Fulfills EU RoHS substance requirements | Yes |
| Exemption | 6(c) |

China RoHS

| | |
|--|---|
| Environment friendly use period (EFUP) | EFUP-50 |
| | An article-related China RoHS declaration table can be found in the download area for the respective article under "Manufacturer declaration". For all articles with EFUP-E, no China RoHS declaration table issued and required. |

EU REACH SVHC

| | |
|-------------------------------------|--------------------------------------|
| REACH candidate substance (CAS No.) | Lead(CAS: 7439-92-1) |
| SCIP | 5c6653a3-94d0-49cf-9072-70c54a30591d |

Phoenix Contact 2026 © - all rights reserved

<https://www.phoenixcontact.com>

PHOENIX CONTACT Ltd
Halesfield 13, Telford
Shropshire, TF7 4PG
01952 681700
info@phoenixcontact.co.uk