

PSD-S CE-SM SPRING - Connection element



2700091

<https://www.phoenixcontact.com/gb/products/2700091>

Please be informed that the data shown in this PDF document is generated from our online catalog. Please find the complete data in the user documentation. Our general terms of use for downloads are valid.

Connection element with spring-cage terminal blocks for base mounting



Product description

This connection element is intended to be part of a modular signal tower and is used to electrically connect the tower. According to your requirements, a signal tower may comprise any combination of up to five signal elements. You may use up to five optical signal elements or up to four optical and one audible signal element. Only use an audible signal element as the top element. A bayonet locking system establishes the mechanical and electrical connection between the elements. Mounting elements for base or tube mounting can be used to mount the signal tower. Please note that PSD-S signal towers (70 mm diameter) are not mechanically compatible with PSD-S 50 signal towers (50 mm diameter).

Your advantages

- Connection element for mounting on a mounting surface (floor), junction box, or bracket
- Spring-cage connection
- Degree of protection: IP65, when mounted

Commercial data

| | |
|--------------------------------------|---------------|
| Item number | 2700091 |
| Packing unit | 1 pc |
| Minimum order quantity | 1 pc |
| Sales key | DRL116 |
| Product key | DRL116 |
| GTIN | 4046356490146 |
| Weight per piece (including packing) | 94.2 g |
| Weight per piece (excluding packing) | 86 g |
| Customs tariff number | 85319000 |
| Country of origin | DE |

PSD-S CE-SM SPRING - Connection element



2700091

<https://www.phoenixcontact.com/gb/products/2700091>

Technical data

Notes

Note on application

| | |
|---------------------|-------------------------|
| Note on application | Only for industrial use |
|---------------------|-------------------------|

Product properties

| | |
|-------------------------------------|--------------------|
| Product family | PSD-S |
| Scope of supply | End cover and seal |
| | End cover and seal |
| Number of mountable signal elements | max. 5 |

Connection data

without ferrule

| | |
|---|---|
| Connection method | Spring-cage connection |
| Conductor cross-section, flexible | 0.5 mm ² ... 1.5 mm ² |
| Conductor cross-section, flexible [AWG] | ... 15 |
| Stripping length | 7 mm |

With ferrule

| | |
|---|--|
| Connection method | Spring-cage connection |
| Conductor cross-section, flexible | 0.25 mm ² ... 1.5 mm ² |
| Conductor cross-section, flexible [AWG] | ... 15 |
| Stripping length | 7 mm |

solid

| | |
|--------------------------------|---|
| Connection method | Spring-cage connection |
| Conductor cross-section, rigid | 0.5 mm ² ... 1.5 mm ² |
| Stripping length | 7 mm |

Dimensions

| | |
|---------------------|-------|
| Dimensional drawing | |
| Height | 27 mm |
| Diameter | 69 mm |

Material specifications

PSD-S CE-SM SPRING - Connection element



2700091

<https://www.phoenixcontact.com/gb/products/2700091>

| | |
|----------|-------|
| Color | black |
| Material | PA-GF |

Environmental and real-life conditions

Ambient conditions

| | |
|---------------------------------|----------------------|
| Degree of protection | IP65, when installed |
| Ambient temperature (operation) | -30 °C ... 50 °C |

Mounting

| | |
|-------------------|--|
| Mounting type | Screw mounting (Seal pre-installed for each element) |
| Mounting position | any |

PSD-S CE-SM SPRING - Connection element

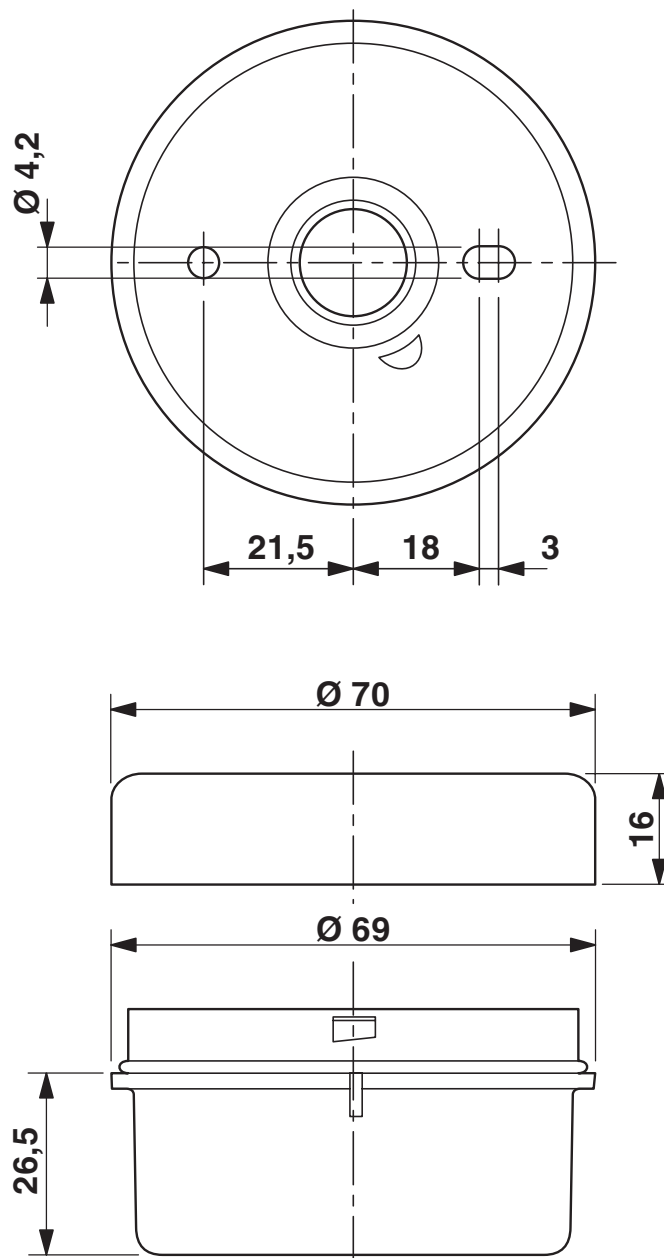
2700091

<https://www.phoenixcontact.com/gb/products/2700091>



Drawings

Dimensional drawing



PSD-S CE-SM SPRING - Connection element



2700091

<https://www.phoenixcontact.com/gb/products/2700091>

Approvals

To download certificates, visit the product detail page: <https://www.phoenixcontact.com/gb/products/2700091>



cULus Listed

Approval ID: E123528

PSD-S CE-SM SPRING - Connection element



2700091

<https://www.phoenixcontact.com/gb/products/2700091>

Classifications

ECLASS

| | |
|-------------|----------|
| ECLASS-13.0 | 27371232 |
| ECLASS-15.0 | 27371232 |

ETIM

| | |
|-----------|----------|
| ETIM 10.0 | EC001152 |
|-----------|----------|

UNSPSC

| | |
|-------------|----------|
| UNSPSC 21.0 | 46171600 |
|-------------|----------|

PSD-S CE-SM SPRING - Connection element



2700091

<https://www.phoenixcontact.com/gb/products/2700091>

Environmental product compliance

EU RoHS

| | |
|---|--------------------|
| Fulfills EU RoHS substance requirements | Yes, No exemptions |
|---|--------------------|

China RoHS

| | |
|--|--|
| Environment friendly use period (EFUP) | EFUP-E |
| | No hazardous substances above the limits |

EU REACH SVHC

| | |
|-------------------------------------|----------------------------|
| REACH candidate substance (CAS No.) | No substance above 0.1 wt% |
|-------------------------------------|----------------------------|

Phoenix Contact 2026 © - all rights reserved
<https://www.phoenixcontact.com>

PHOENIX CONTACT Ltd
Halesfield 13, Telford
Shropshire, TF7 4PG
01952 681700
info@phoenixcontact.co.uk