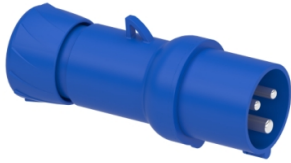


Product datasheet

Specifications



PratiKa wander plug - straight - 16 A - 2P + E - 200...250 V AC - IP44

Local distributor code:

411663735

PKX16M423

EAN Code: 3303432009038

Main

Range	Mureva
Product or component type	Wander plug
Device short name	Mureva plug
Plug, socket category	Low voltage
Poles description	2P + E
Network type	AC
Outlet standard	Industrial

Complementary

Plug, socket, control station shape	Straight
[In] rated current	16 A
[Ue] rated operational voltage	200...250 V
Network frequency	50/60 Hz
Ground lug clockwise position	6 h
Plug, socket material	Housing: self-extinguishing engineering polymer
Contacts material	Sleeves: brass
Connections - terminals	Fast connection
Cable cross section	1...2.5 mm ²
Cable outer diameter	8...15 mm
cable entry	Fair lead Cable gland
Thread type	Pg 16
Net weight	0.15 kg
Height	129 mm
Width	59 mm
Depth	59 mm
Colour	Grey (RAL 7035)
Voltage colour	Blue

Environment

Standards	IEC 60309-1 IEC 60309-2
IP degree of protection	IP44 conforming to IEC 60529

IK degree of protection	IK08 conforming to EN 62262
Fire resistance	850 °C conforming to IEC 60695-2-11
Relative humidity	50 % at 40 °C 70 % at 30 °C 90 % at 20 °C
Operating altitude	2000 m
Ambient air temperature for operation	35 °C (86400 s) -25...40 °C

Packing Units

Unit Type of Package 1	PCE
Number of Units in Package 1	1
Package 1 Height	5.500 cm
Package 1 Width	5.400 cm
Package 1 Length	13.500 cm
Package 1 Weight	133.200 g
Unit Type of Package 2	BB1
Number of Units in Package 2	10
Package 2 Height	10.200 cm
Package 2 Width	26.000 cm
Package 2 Length	27.000 cm
Package 2 Weight	1.438 kg
Unit Type of Package 3	S03
Number of Units in Package 3	40
Package 3 Height	30.000 cm
Package 3 Width	30.000 cm
Package 3 Length	40.000 cm
Package 3 Weight	5.728 kg

Logistical informations

Country of origin	IT
--------------------------	----

Contractual warranty

Warranty (in months)	18
-----------------------------	----



Environmental Data

Schneider Electric aims to achieve Net Zero status by 2050 through supply chain partnerships, lower impact materials, and circularity via our ongoing “Use Better, Use Longer, Use Again” campaign to extend product lifetimes and recyclability.

[Environmental Data explained >](#)

[How we assess product sustainability >](#)



Environmental footprint

Total lifecycle Carbon footprint	8 kg CO2 eq.
Environmental Disclosure	Product Environmental Profile
Carbon footprint of the manufacturing phase [A1 to A3]	0.9 kg CO2 eq.
Carbon footprint of the distribution phase [A4]	0 kg CO2 eq.
Carbon footprint of the installation phase [A5]	0 kg CO2 eq.
Carbon footprint of the use phase [B2, B3, B4, B6]	6 kg CO2 eq.
Carbon footprint of the end-of-life phase [C1 to C4]	0.4 kg CO2 eq.

Use Better



Materials and Substances

Packaging made with recycled cardboard	Yes
Packaging without single use plastic	Yes
EU RoHS Directive	Compliant with Exemptions
SCIP Number	661ec80b-b956-4b0a-92bb-53046f4cfb4c
REACH Regulation	REACH Declaration

Use Longer



Lifetime extension

Repair	No
--------	----

Use Again



Repack and remanufacture

End of life manual availability	No need of specific recycling operations
Take-back	No
WEEE Label	 The product must be disposed on European Union markets following specific waste collection and never end up in rubbish bins

Technical Illustration

Exploded view



Technical Illustration

Exploded view



Technical Illustration

Exploded view



Technical Illustration

Exploded view



Image of product / Alternate images

Alternative

