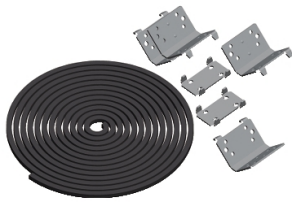


Product datasheet

Specifications



"Standard coupling kit, PanelSeT SFN, PanelSet SF, set of 4 brackets, 2 connectors, sealing gasket and fixing elements"

Local distributor code:

1917697

NSYSFBK

EAN Code: 3606485131825

Main

| | |
|------------------------------------|---|
| Range | PanelSeT |
| Accessory / separate part category | Coupling accessory |
| Product or component type | Coupling kit |
| Anwendung | Multi-purpose |
| Mounting location | Side coupling of 2 enclosures Depthwise coupling of 2 enclosures |
| Range compatibility | PanelSeT SF suitable enclosure |
| Device composition | 2 flat connector 4 bracket fixing elements sealing gasket |
| Quantity per set | Set of 1 |

Complementary

| | |
|-------------------------|---|
| Material | Sealing gasket: EPDM Bracket: steel Flat connector: steel |
| Surface finish | Zinc coated |
| Fixing mode | By screws - screw type M6 self tapping |
| Height | 65 mm |
| Width | 340 mm |
| Depth | 365 mm |
| IP degree of protection | IP55 |
| Mounting diameter | 0 mm |

Packing Units

| | |
|------------------------------|-----------|
| Unit Type of Package 1 | PCE |
| Number of Units in Package 1 | 1 |
| Package 1 Height | 6.500 cm |
| Package 1 Width | 34.000 cm |
| Package 1 Length | 36.500 cm |
| Package 1 Weight | 1.664 kg |
| Unit Type of Package 2 | P12 |
| Number of Units in Package 2 | 100 |

| | |
|------------------|------------|
| Package 2 Height | 116.000 cm |
| Package 2 Width | 80.000 cm |
| Package 2 Length | 120.000 cm |
| Package 2 Weight | 187.000 kg |

Logistical informations

Country of origin FR

Contractual warranty

Warranty (in months) 18



Environmental Data

Schneider Electric aims to achieve Net Zero status by 2050 through supply chain partnerships, lower impact materials, and circularity via our ongoing “Use Better, Use Longer, Use Again” campaign to extend product lifetimes and recyclability.

[Environmental Data explained >](#)

[How we assess product sustainability >](#)



Environmental footprint

| | |
|--|---|
| Total lifecycle Carbon footprint | 12 kg CO2 eq. |
| Environmental Disclosure | Product Environmental Profile |
| Carbon footprint of the manufacturing phase [A1 to A3] | 7 kg CO2 eq. |
| Carbon footprint of the distribution phase [A4] | 0.3 kg CO2 eq. |
| Carbon footprint of the installation phase [A5] | 0.4 kg CO2 eq. |
| Carbon footprint of the use phase [B2, B3, B4, B6] | 0 kg CO2 eq. |
| Carbon footprint of the end-of-life phase [C1 to C4] | 4 kg CO2 eq. |

Use Better



Materials and Substances

| | |
|--|--|
| Packaging made with recycled cardboard | No |
| Packaging without single use plastic | No |
| EU RoHS Directive | Pro-active compliance (Product out of EU RoHS legal scope) |
| SCIP Number | 52da316e-d4e1-4114-85c0-32a03b2934fd |
| REACH Regulation | REACH Declaration |

Use Longer



Lifetime extension

| | |
|--------|----|
| Repair | No |
|--------|----|

Use Again



Repack and remanufacture

| | |
|---------------------------------|--|
| Recyclability potential, in % | 98 |
| End of life manual availability | No need of specific recycling operations |
| Take-back | No |