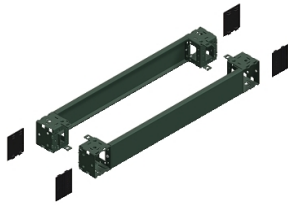


Product datasheet

Specifications



"Front & rear plinth, PanelSeT SFN, PanelSeT SF, PanelSeT SM, for electrical enclosure W1200mm, plinth H100mm"

Local distributor code:

398323253

NSYSPF12100

EAN Code: 3606485126593

Main

Range	PanelSeT
Accessory / separate part category	Enclosure accessory
Product or component type	Plinth front
Application	Multi-purpose
Nominal dimensions of the housing	-
Device composition	fixing elements 4 corner cover 1 front panel 1 rear panel 4 corner
Range compatibility	PanelSeT SF PanelSeT SM PanelSeT S3D PanelSeT CRN PanelSeT SFN
Mounting support	Plinth side panels

Complementary

Fixing mode	By fixing element - on structure location
Colour	Grey (RAL 7022)
Surface finish	Epoxy-polyester powder
Permanent permissible load	1300 kg
Height	100 mm
Width	Nominal: 1200 mm

Environment

IP degree of protection	IP20 (complete plinth)
IK degree of protection	IK10

Packing Units

Unit Type of Package 1	PCE
Number of Units in Package 1	1
Package 1 Height	11.500 cm
Package 1 Width	20.000 cm
Package 1 Length	122.000 cm

Package 1 Weight	6.500 kg
Unit Type of Package 2	PAL
Number of Units in Package 2	40
Package 2 Height	101.000 cm
Package 2 Width	101.000 cm
Package 2 Length	121.000 cm
Package 2 Weight	274.000 kg

Logistical informations

Country of origin	IN
-------------------	----

Contractual warranty

Warranty (in months)	18
----------------------	----



Environmental Data

Schneider Electric aims to achieve Net Zero status by 2050 through supply chain partnerships, lower impact materials, and circularity via our ongoing “Use Better, Use Longer, Use Again” campaign to extend product lifetimes and recyclability.

[Environmental Data explained >](#)

[How we assess product sustainability >](#)



Environmental footprint

Total lifecycle Carbon footprint	48 kg CO2 eq.
Environmental Disclosure	Product Environmental Profile
Carbon footprint of the manufacturing phase [A1 to A3]	30 kg CO2 eq.
Carbon footprint of the distribution phase [A4]	1 kg CO2 eq.
Carbon footprint of the installation phase [A5]	2 kg CO2 eq.
Carbon footprint of the use phase [B2, B3, B4, B6]	0 kg CO2 eq.
Carbon footprint of the end-of-life phase [C1 to C4]	16 kg CO2 eq.

Use Better



Materials and Substances

Packaging made with recycled cardboard	No
Packaging without single use plastic	No
EU RoHS Directive	Pro-active compliance (Product out of EU RoHS legal scope)
SCIP Number	52da316e-d4e1-4114-85c0-32a03b2934fd
REACH Regulation	REACH Declaration

Use Longer



Lifetime extension

Repair	No
--------	----

Use Again



Repack and remanufacture

End of life manual availability	No need of specific recycling operations
Take-back	No