

Product datasheet

Specifications



Longstator motor, Lexium MC12 multi carrier, arc 45 degree, 200mm, IP65

LXMMC12MA02S100

EAN Code: 3606482085008

Main

Range of product	Lexium MC12 multi carrier
Product or component type	Longstator motor

Complementary

Installation direction	45°
Peak force	120 N
Accuracy	0.05 repetitive 0.35 absolute
Maximum number of carrier per controller	200
Maximum length of track per controller	40 m
Maximum actuation speed	4 m/s
Maximum attraction force	380 N
Maximum acceleration	120 m/s ²
Minimum distance between carriers	0 m
Maximum number of carrier per segment	4
IP degree of protection	IP65
Radius of curvature	256 mm
Length	200.4 mm
Depth	136 mm
Net weight	4.5 kg

Packing Units

Unit Type of Package 1	PCE
Number of Units in Package 1	1
Package 1 Height	4.100 cm
Package 1 Width	19.500 cm
Package 1 Length	22.000 cm
Package 1 Weight	5.244 kg

Logistical informations

Country of origin	DE
-------------------	----

Contractual warranty

Warranty (in months)

18



Environmental Data

Schneider Electric aims to achieve Net Zero status by 2050 through supply chain partnerships, lower impact materials, and circularity via our ongoing “Use Better, Use Longer, Use Again” campaign to extend product lifetimes and recyclability.

[Environmental Data explained >](#)

[How we assess product sustainability >](#)



Environmental footprint

Total lifecycle Carbon footprint	20 721 kg CO2 eq.
Environmental Disclosure	Product Environmental Profile
Carbon footprint of the manufacturing phase [A1 to A3]	118 kg CO2 eq.
Carbon footprint of the distribution phase [A4]	0.7 kg CO2 eq.
Carbon footprint of the installation phase [A5]	0 kg CO2 eq.
Carbon footprint of the use phase [B2, B3, B4, B6]	20 601 kg CO2 eq.
Carbon footprint of the end-of-life phase [C1 to C4]	1 kg CO2 eq.

Use Better



Materials and Substances

Packaging made with recycled cardboard	Yes
Packaging without single use plastic	No
EU RoHS Directive	Compliant with Exemptions
REACH Regulation	REACH Declaration
PVC free	Yes

Use Longer



Lifetime extension

Repair	No
--------	----

Use Again



Repack and remanufacture

End of life manual availability	End of Life Information
Take-back	No

Offer Marketing Illustration

Product benefits / Features

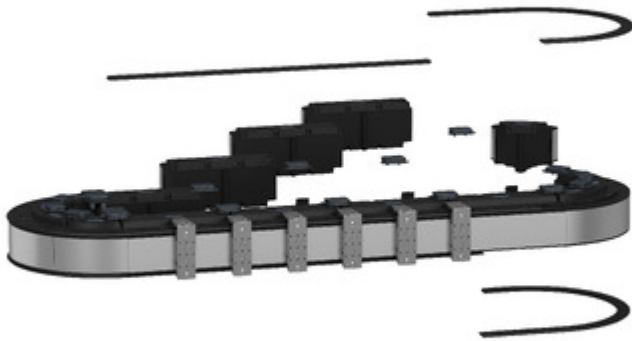
The infographic features a central 3D rendering of a Lexium MC12 motor assembly. It is surrounded by four circular icons, each with a corresponding benefit text block. The background is a solid light blue color.

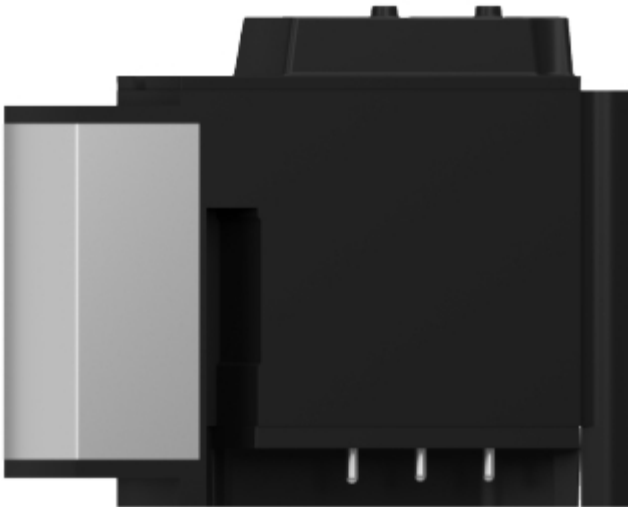
Benefits Lexium™ MC12

- Icon: Gear and lightning bolt**
Increase machine performance and flexibility by up to 50%
Increase your productivity and flexibility with a cost-effective, efficient, and wide range of products to choose from.
- Icon: Document with checkmark**
Reduce your time to market by up to 30% with improved design speed and design quality of your machines.
- Icon: Clock**
Achieve faster changeover time by a simple virtual commissioning and mechanical installation without any special tools.
- Icon: Magnifying glass over graph**
Increase OEE of the machines
Get faster, flexible machines with less maintenance and a higher level of diagnostics.

Image of product / Alternate images

Alternative





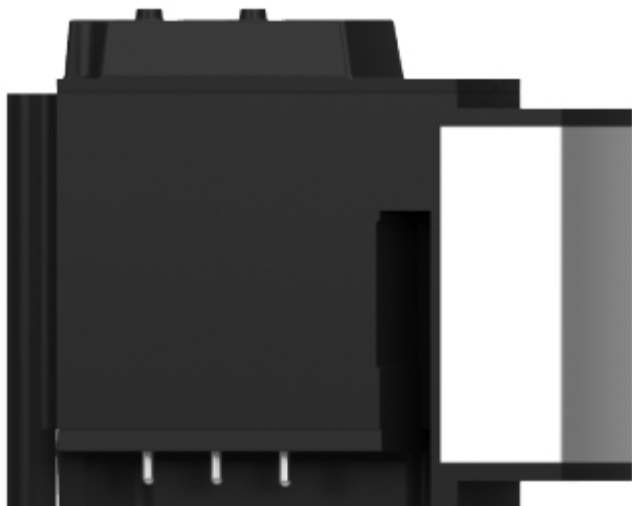




Image of product in real life situation

