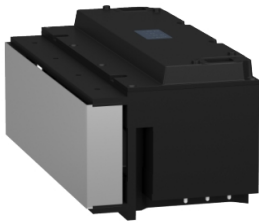


Product datasheet

Specifications



Longstator motor, Lexium MC12 multi carrier, straight, 300mm, IP65

LXMMC12MS06S100

EAN Code: 3606482084995

Main

| | |
|---------------------------|---------------------------|
| Range of product | Lexium MC12 multi carrier |
| Product or component type | Longstator motor |

Complementary

| | |
|--|----------------------------------|
| Installation direction | Straight |
| Peak force | 120 N |
| Accuracy | 0.03 repetitive 0.25 absolute |
| Maximum number of carrier per controller | 200 |
| Maximum length of track per controller | 40 m |
| Maximum actuation speed | 4 m/s |
| Maximum attraction force | 380 N |
| Maximum acceleration | 120 m/s ² |
| Minimum distance between carriers | 0 m |
| Maximum number of carrier per segment | 6 |
| IP degree of protection | IP65 |
| Length | 300.4 mm |
| Width | 162.6 mm |
| Depth | 136 mm |
| Net weight | 7.9 kg |

Packing Units

| | |
|------------------------------|------------|
| Unit Type of Package 1 | PCE |
| Number of Units in Package 1 | 1 |
| Package 1 Height | 20.000 cm |
| Package 1 Width | 26.000 cm |
| Package 1 Length | 59.500 cm |
| Package 1 Weight | 9.168 kg |
| Unit Type of Package 2 | P12 |
| Number of Units in Package 2 | 32 |
| Package 2 Height | 160.000 cm |
| Package 2 Width | 80.000 cm |

| | |
|------------------|------------|
| Package 2 Length | 120.000 cm |
|------------------|------------|

| | |
|------------------|------------|
| Package 2 Weight | 324.211 kg |
|------------------|------------|

Logistical informations

| | |
|-------------------|----|
| Country of origin | DE |
|-------------------|----|

Contractual warranty

| | |
|----------------------|----|
| Warranty (in months) | 18 |
|----------------------|----|



Environmental Data

Schneider Electric aims to achieve Net Zero status by 2050 through supply chain partnerships, lower impact materials, and circularity via our ongoing “Use Better, Use Longer, Use Again” campaign to extend product lifetimes and recyclability.

[Environmental Data explained >](#)

[How we assess product sustainability >](#)



Environmental footprint

| | |
|--|---|
| Total lifecycle Carbon footprint | 20 799 kg CO2 eq. |
| Environmental Disclosure | Product Environmental Profile |
| Carbon footprint of the manufacturing phase [A1 to A3] | 195 kg CO2 eq. |
| Carbon footprint of the distribution phase [A4] | 1 kg CO2 eq. |
| Carbon footprint of the installation phase [A5] | 0 kg CO2 eq. |
| Carbon footprint of the use phase [B2, B3, B4, B6] | 20 601 kg CO2 eq. |
| Carbon footprint of the end-of-life phase [C1 to C4] | 2 kg CO2 eq. |

Use Better



Materials and Substances

| | |
|--|-----------------------------------|
| Packaging made with recycled cardboard | Yes |
| Packaging without single use plastic | No |
| EU RoHS Directive | Compliant with Exemptions |
| REACH Regulation | REACH Declaration |
| PVC free | Yes |

Use Longer



Lifetime extension

| | |
|--------|----|
| Repair | No |
|--------|----|

Use Again



Repack and remanufacture

| | |
|---------------------------------|---|
| End of life manual availability | End of Life Information |
| Take-back | No |

Offer Marketing Illustration

Product benefits / Features

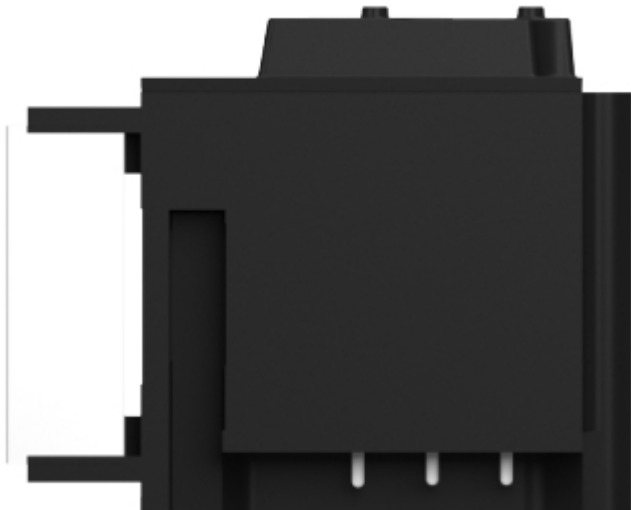
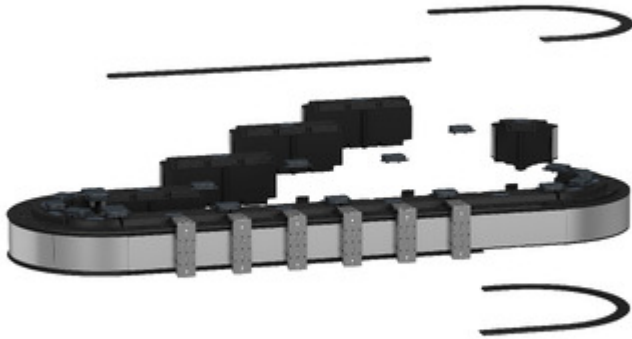
The infographic features a central image of a Lexium MC12 circuit breaker assembly. It is surrounded by four circular icons, each with a corresponding benefit text block. The background is a solid light blue color.

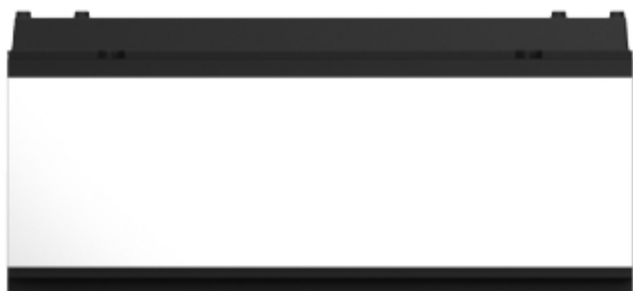
Benefits Lexium™ MC12

- Icon: Gear and lightning bolt**
Increase machine performance and flexibility by up to 50%
Increase your productivity and flexibility with a cost-effective, efficient, and wide range of products to choose from.
- Icon: Lightning bolt and clock**
Reduce your time to market by up to 30% with improved design speed and design quality of your machines.
- Icon: Clock and lightning bolt**
Achieve faster changeover time by a simple virtual commissioning and mechanical installation without any special tools.
- Icon: Magnifying glass and lightning bolt**
Increase OEE of the machines
Get faster, flexible machines with less maintenance and a higher level of diagnostics.

Image of product / Alternate images

Alternative





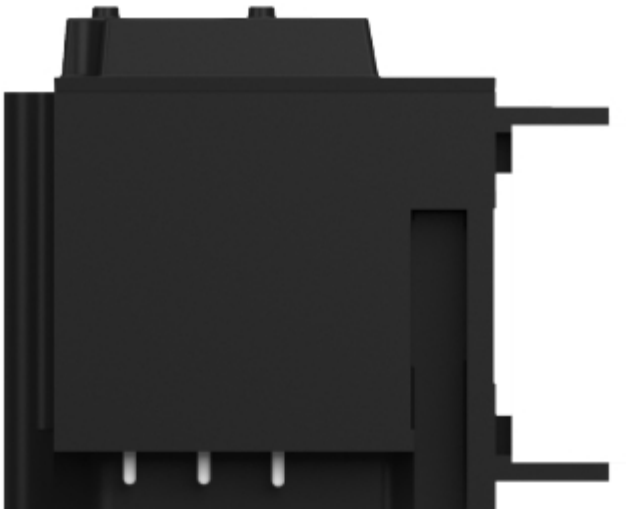




Image of product in real life situation

