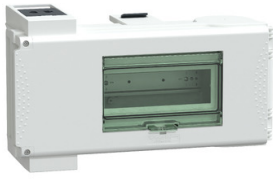


Product datasheet

Specifications



TAP OFF UNIT 63A 8 MODULES

Local distributor code:

2222365

KSB63SM48

EAN Code: 3606480006135

Main

Range of product	Canalis
Range compatibility	Canalis KS busbar trunking Canalis KT busbar trunking
Product or component type	Tap-off unit
busbar trunking compatibility	Canalis KS busbar trunking plug-in Canalis KT busbar trunking with KS type plug-in
[Ie] rated operational current	63 A
Protection type	Circuit breaker: miniature circuit breaker (MCB)
Mounting mode	Plug-in with fixed polarity
Tap-off unit polarity	3L+N+PE
Colour	White (RAL 9001)

Complementary

Device application	Medium power distribution
Provided equipment	circuit-breaker to be ordered separately
[Ue] rated operational voltage	230...690 V depending on protective device
[Uimp] rated impulse withstand voltage	6.8 kV
[Ui] rated insulation voltage	400 V depending on protective device 500 V depending on protective device 690 V depending on protective device
Network frequency	50/60 Hz
Electrical connection	Lugs - ISO63 16 mm ² flexible Lugs - ISO63 16 mm ² rigid
door/cover opening side	Right
Tap-off unit disconnection mode	By opening the door
Standards	IEC 61439-6 IEC 61439-1
Body material	Plastic
18 mm pitches	8
Width	444 mm
Depth	133 mm
depth (door open)	432.5 mm
Height	220 mm
Net weight	2.4 kg

Disclaimer: This documentation is not intended as a substitute for and is not to be used for determining suitability or reliability of these products for specific user applications

Environment

Earthing system	TT TN-S IT
-----------------	------------------

IP degree of protection	IP55 conforming to IEC 60529
-------------------------	------------------------------

IK degree of protection	IK08 conforming to IEC 62262
-------------------------	------------------------------

Packing Units

Unit Type of Package 1	PCE
------------------------	-----

Number of Units in Package 1	1
------------------------------	---

Package 1 Height	16.000 cm
------------------	-----------

Package 1 Width	20.300 cm
-----------------	-----------

Package 1 Length	35.700 cm
------------------	-----------

Package 1 Weight	2.015 kg
------------------	----------

Unit Type of Package 2	P12
------------------------	-----

Number of Units in Package 2	38
------------------------------	----

Package 2 Height	80.000 cm
------------------	-----------

Package 2 Width	80.000 cm
-----------------	-----------

Package 2 Length	120.000 cm
------------------	------------

Package 2 Weight	98.000 kg
------------------	-----------

Logistical informations

Country of origin	IT
-------------------	----

Contractual warranty

Warranty (in months)	18
----------------------	----



Environmental Data

Schneider Electric aims to achieve Net Zero status by 2050 through supply chain partnerships, lower impact materials, and circularity via our ongoing “Use Better, Use Longer, Use Again” campaign to extend product lifetimes and recyclability.

[Environmental Data explained >](#)

[How we assess product sustainability >](#)



Environmental footprint

[Environmental Disclosure](#)

[Product Environmental Profile](#)

Use Better



Materials and Substances

Packaging made with recycled cardboard

Yes

Packaging without single use plastic

Yes

[EU RoHS Directive](#)

Compliant

SCIP Number

Cb1a2eb4-9b7e-4708-8b1b-be81799688d2

REACH Regulation

[REACH Declaration](#)

Halogen-free status

Halogen free product

PVC free

Yes

Silicone-free

Yes

Use Longer



Lifetime extension

Repair

No

Use Again



Repack and remanufacture

End of life manual availability

No need of specific recycling operations

Take-back

No

WEEE Label



The product must be disposed on European Union markets following specific waste collection and never end up in rubbish bins

Technical Illustration

Assembly's dimensions

