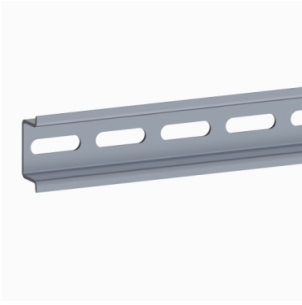


# Product datasheet

Specifications



## One symmetric mounting rail perforated 35x15 L2000mm Supply: 20

Local distributor code:  
398253336

NSYSDR200D

EAN Code: 3606480184345

### Main

Anwendung	Multi-purpose
Range	PanelSeT
Product or component type	Rail
Accessory / separate part category	Mounting accessory
Type of rail	Symmetrical DIN
Enclosure nominal dimensions	-
Range compatibility	PanelSeT
Device composition	1 rail
Quantity per set	Set of 10

### Complementary

Material	Galvanised steel
Surface finish	Perforated
Fixing mode	By fixing element - structure of enclosure location
Adjustment	Pitch 25 mm Continuous adjustment
Length	2000 mm
Height	Nominal: 15 mm
Width	Nominal: 35 mm
thickness	1.5 mm

### Packing Units

Unit Type of Package 1	PCE
Number of Units in Package 1	1
Package 1 Height	5.000 cm
Package 1 Width	0.800 cm
Package 1 Length	201.500 cm
Package 1 Weight	1.258 kg
Unit Type of Package 2	CAR
Number of Units in Package 2	10
Package 2 Height	5.000 cm
Package 2 Width	8.000 cm

---

<b>Package 2 Length</b>	201.500 cm
<b>Package 2 Weight</b>	12.580 kg
<b>Unit Type of Package 3</b>	PAL
<b>Number of Units in Package 3</b>	540
<b>Package 3 Height</b>	50.000 cm
<b>Package 3 Width</b>	201.500 cm
<b>Package 3 Length</b>	120.000 cm
<b>Package 3 Weight</b>	713.000 kg

---

## Logistical informations

---

Country of origin ES

## Contractual warranty

---

Warranty (in months) 18



## Environmental Data

Schneider Electric aims to achieve Net Zero status by 2050 through supply chain partnerships, lower impact materials, and circularity via our ongoing “Use Better, Use Longer, Use Again” campaign to extend product lifetimes and recyclability.

[Environmental Data explained >](#)

[How we assess product sustainability >](#)



### Environmental footprint

[Environmental Disclosure](#)

[Product Environmental Profile](#)

## Use Better



### Materials and Substances

Packaging made with recycled cardboard

No

Packaging without single use plastic

No

[EU RoHS Directive](#)

Pro-active compliance (Product out of EU RoHS legal scope)

REACH Regulation

[REACH Declaration](#)

## Use Longer



### Lifetime extension

Repair

No

## Use Again



### Repack and remanufacture

End of life manual availability

No need of specific recycling operations

Take-back

No