

PLD E 400 W 500 - LED enclosure light

2702223

<https://www.phoenixcontact.com/gb/products/2702223>

Please be informed that the data shown in this PDF document is generated from our online catalog. Please find the complete data in the user documentation. Our general terms of use for downloads are valid.



LED enclosure light, 24 V DC, length: 500 mm, degree of protection: IP20, can be swiveled, can be switched in series, including mounting accessories

Product description

The LED light is designed to illuminate the interior of control cabinets. The prismatic integrated into the light cover ensures optimum illumination of the control cabinet. You can mount the light without tools via the clip system. You can connect several lights in succession. You can switch the light on and off either via the integrated button or via an external door position switch.

Your advantages

- Tool-free mounting, thanks to clip fastening
- Wiring via sensor/actuator cables with M8 snap-in technology
- Series connection reduces cabling effort for control cabinets arranged in series
- Optimum lighting of the control cabinet, thanks to integrated prismatics and capacity to swivel
- Swiveling enables optimum adjustment to the relevant control cabinet depth
- LED service life of 50,000 h (L70 value) prevents bulb replacement

Commercial data

| | |
|--------------------------------------|---------------|
| Item number | 2702223 |
| Packing unit | 1 pc |
| Minimum order quantity | 1 pc |
| Sales key | DRL232 |
| Product key | DRL232 |
| GTIN | 4055626057798 |
| Weight per piece (including packing) | 274.65 g |
| Weight per piece (excluding packing) | 274.65 g |
| Customs tariff number | 94054231 |
| Country of origin | DE |

PLD E 400 W 500 - LED enclosure light



2702223

<https://www.phoenixcontact.com/gb/products/2702223>

Technical data

Notes

Utilization restriction

| | |
|----------|---------------------------------------------------------------------------|
| EMC note | EMC: class A product, see manufacturer's declaration in the download area |
|----------|---------------------------------------------------------------------------|

Product properties

| | |
|--------------------|------------------------------------------------------------------------------------------------------------|
| Application | Control cabinet |
| Mounting position | any |
| Special properties | can be swiveled $\pm 90^\circ$ swivel range can be switched in series including mounting accessories |
| Socket type | No socket |

Electrical properties

| | |
|-------------------------------------------------|-----|
| Maximum power dissipation for nominal condition | 5 W |
|-------------------------------------------------|-----|

Supply: Module electronics

| | |
|----------------------|------------------------|
| Connection method | M8 connector (snap-in) |
| Number of positions | 3 |
| Supply voltage | 24 V DC |
| Supply voltage range | 19.2 V DC ... 30 V DC |
| Power consumption | 5 W |

Connection data

| | |
|-------------------|------------------------|
| Connection method | M8 connector (snap-in) |
|-------------------|------------------------|

Signaling

Light properties

| | |
|-------------------------|------------------------------------------------------------------|
| Source of light type | LED |
| Number of LEDs | 20 |
| Color temperature | 5000 K |
| Color rendering index | 75 |
| Luminous flux | 560 lm (Net luminous flux) |
| Illumination | max. 1350 lx (50 cm distance) max. 335 lx (Distance of 1 m) |
| Ordinance | Delegated Regulation (EU) 2019/2015 |
| Energy efficiency class | E (1 light source) |
| Note | This product contains an energy efficiency class E light source. |


Dimensions

PLD E 400 W 500 - LED enclosure light



2702223

<https://www.phoenixcontact.com/gb/products/2702223>

| | |
|---------------------|------------------------------------------------------------------------------------|
| Dimensional drawing |  |
| Width | 23 mm |
| Height | 38 mm |
| Length | 500 mm |

Material specifications

| | |
|------------------|-------------------------|
| Color | traffic grey A RAL 7042 |
| Material | Plastic |
| Housing material | Plastic |

Environmental and real-life conditions

Ambient conditions

| | |
|------------------------------------------|---------------------------------------------------|
| Ambient temperature (operation) | -25 °C ... 60 °C |
| Degree of protection | IP20 |
| Air pressure (operation) | 70 kPa ... 106 kPa (up to 3000 m above sea level) |
| Air pressure (storage/transport) | 70 kPa ... 106 kPa (up to 3000 m above sea level) |
| Ambient temperature (storage/transport) | -40 °C ... 85 °C |
| Permissible humidity (operation) | 5 % ... 95 % |
| Permissible humidity (storage/transport) | 5 % ... 95 % |

Standards and regulations

| | |
|------------------|-----|
| Protection class | III |
|------------------|-----|

Mounting

| | |
|-------------------|---------------------------------------------|
| Mounting type | Clip mounting |
| Assembly note | Magnet attachment available as an accessory |
| | Screw fixings available as accessories |
| Mounting position | any |

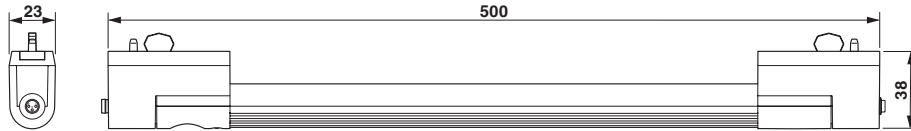
PLD E 400 W 500 - LED enclosure light

2702223

<https://www.phoenixcontact.com/gb/products/2702223>

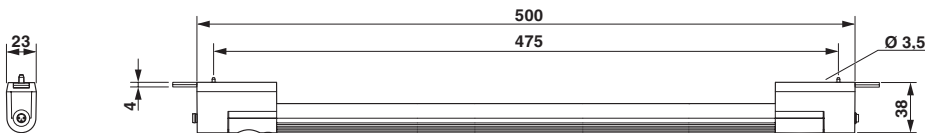
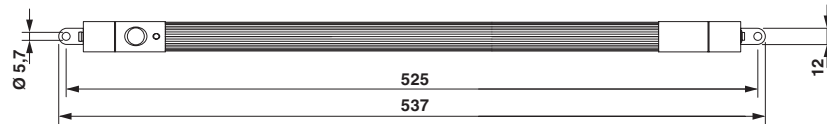
Drawings

Dimensional drawing



Dimensional drawing

Dimensional drawing



Dimensional drawing for screw mounting

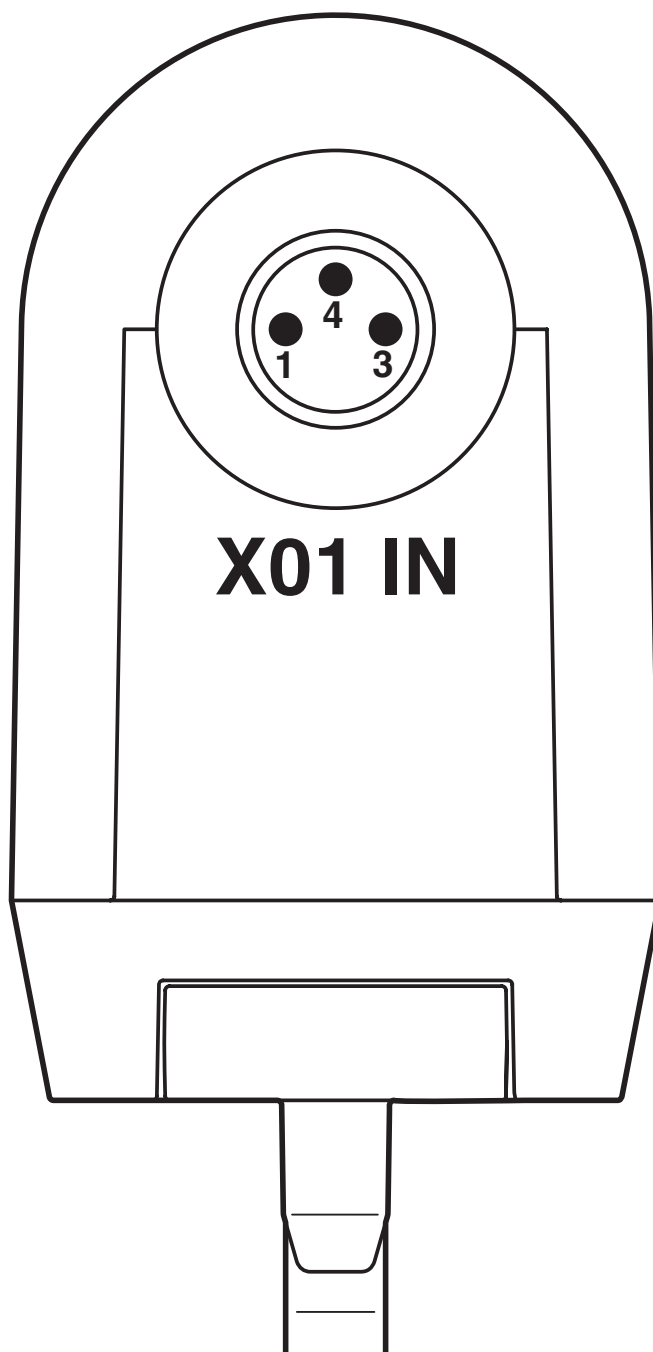
PLD E 400 W 500 - LED enclosure light

2702223

<https://www.phoenixcontact.com/gb/products/2702223>



Connection diagram



Connection of the supply voltage of a light

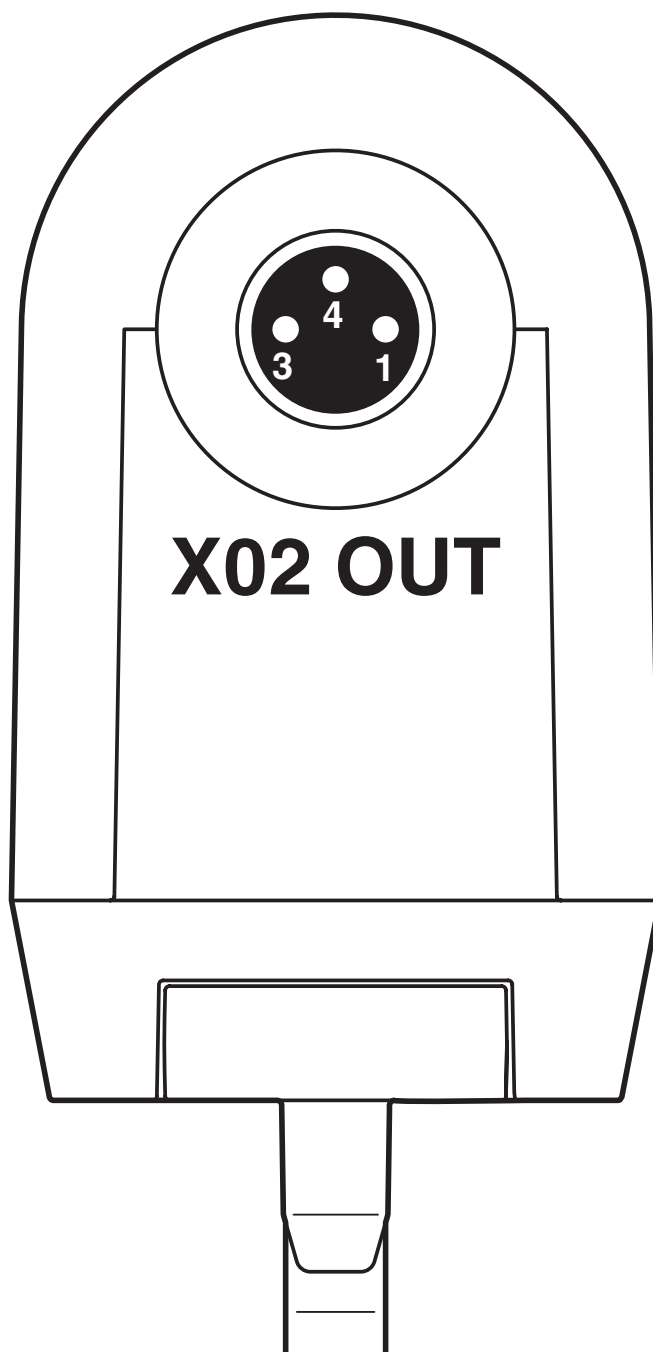
PLD E 400 W 500 - LED enclosure light

2702223

<https://www.phoenixcontact.com/gb/products/2702223>



Connection diagram



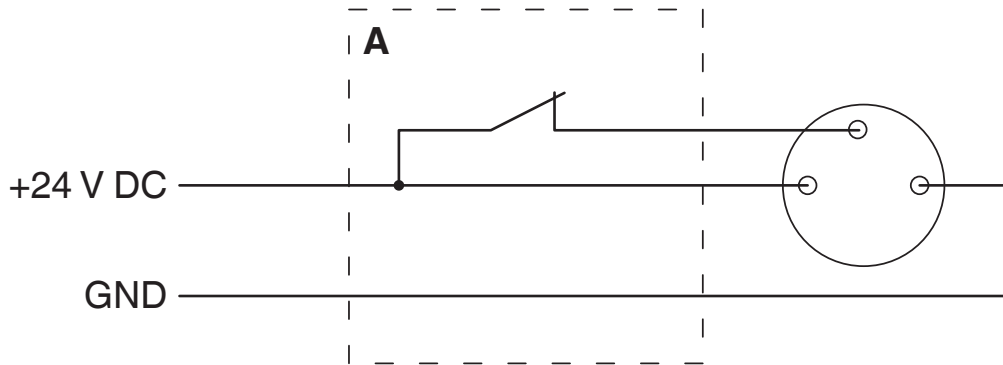
Forwarding of the supply voltage with the series connection of lights

PLD E 400 W 500 - LED enclosure light

2702223

<https://www.phoenixcontact.com/gb/products/2702223>

Connection diagram



Connection of the light using a door position switch (A)

Schematic diagram



Connection of a light

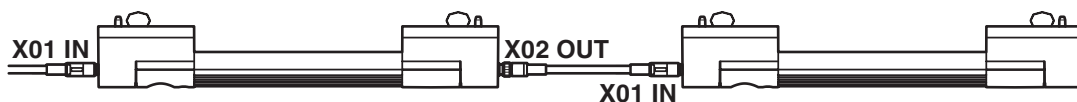
PLD E 400 W 500 - LED enclosure light



2702223

<https://www.phoenixcontact.com/gb/products/2702223>

Schematic diagram



Series connection of two lights

PLD E 400 W 500 - LED enclosure light



2702223

<https://www.phoenixcontact.com/gb/products/2702223>

Classifications

ECLASS

| | |
|-------------|----------|
| ECLASS-13.0 | 27182808 |
|-------------|----------|

UNSPSC

| | |
|-------------|----------|
| UNSPSC 21.0 | 32151500 |
|-------------|----------|

PLD E 400 W 500 - LED enclosure light



2702223

<https://www.phoenixcontact.com/gb/products/2702223>

Environmental product compliance

EU RoHS

| | |
|-----------------------------------------|--------------------|
| Fulfills EU RoHS substance requirements | Yes, No exemptions |
|-----------------------------------------|--------------------|

China RoHS

| | |
|----------------------------------------|------------------------------------------|
| Environment friendly use period (EFUP) | EFUP-E |
| | No hazardous substances above the limits |

EU REACH SVHC

| | |
|-------------------------------------|----------------------------|
| REACH candidate substance (CAS No.) | No substance above 0.1 wt% |
|-------------------------------------|----------------------------|

Phoenix Contact 2026 © - all rights reserved
<https://www.phoenixcontact.com>

PHOENIX CONTACT Ltd
Halesfield 13, Telford
Shropshire, TF7 4PG
01952 681700
info@phoenixcontact.co.uk