

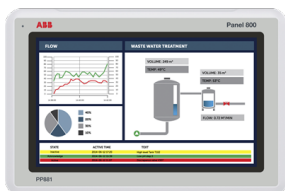



---

 PRODUCT-DETAILS

# 3BSE092978R1

## PP881 Standard Panel 10"




---

### General Information

<b>Product ID:</b>	3BSE092978R1
<b>ABB Type Designation:</b>	PP881
<b>Catalog Description:</b>	PP881 Standard Panel 10"
<b>Long Description:</b>	1024x600 widescreen (16:9). Requires Panel Builder 800 Version 6.2 for configuration.  To protect the front, it's recommended to use the RX881 Touch cover. Replaces PP877. For mounting in the same cut-out as PP877, RX800 Adapter plate is required.
<b>Display Name:</b>	3BSE092978R1

---

### Additional Information

<b>Medium Description:</b>	1024x600 widescreen (16:9). Requires Panel Builder 800 Version 6.2 for configuration.  To protect the front, it's recommended to use the RX881 Touch cover. Replaces PP877. For mounting in the same cut-out as PP877, RX800 Adapter plate is required.
<b>Product Type:</b>	Control_System_Accessory

---

## Ordering

---

<b>HS Code:</b>	853710 -- ELECTRICAL MACHINERY AND EQUIPMENT AND PARTS THEREOF; SOUND RECORDERS AND REPRODUCERS, TELEVISION IMAGE AND SOUND RECORDERS AND REPRODUCERS, AND PARTS AND ACCESSORIES OF SUCH ARTICLES; Boards, panels, consoles, desks, cabinets and other bases, equipped with two or more apparatus of heading 8535 or 8536, for electric control or the distribution of electricity, including those incorporating instruments or apparatus of Chapter 90, and numerical control apparatus, other than switching apparatus of heading 8517; For a voltage not exceeding 1000V
<b>Customs Tariff Number:</b>	85371010

---



---

## Dimensions

---

<b>Product Net Depth / Length:</b>	52 mm
<b>Product Net Height:</b>	194 mm
<b>Product Net Width:</b>	292 mm
<b>Product Net Weight:</b>	1.65 kg

---



---

## Environmental

---

<b>RoHS Information:</b>	Following EU Directive 2011/65/EU
<b>WEEE Category:</b>	2. Screens, Monitors, and Equipment Containing Screens Having a Surface Greater Than 100 cm <sup>2</sup>
<b>Number of Batteries:</b>	1
<b>Battery Chemical Composition:</b>	Lithium
<b>Battery Type:</b>	Button Cell
<b>Battery Weight:</b>	2.5 g
<b>Screen Size:</b>	10.1 in
<b>SCIP:</b>	No SVHC present Taiwan (Chinese Taipei)

---



---

## Categories

---

Products > Control System Products > Panel HMI > Panel 800 > Panel 800 - Operator Panels > PP881 Standard Panels > PP881 Standard Panel 10"

Products > Control Systems > 800xA > Operations > Panel 800

Products > Control Systems > Compact Product Suite > Operations > Panel 800

Products > Control Systems > Freelance > Operations > Panel 800

