

Data sheet for SIMOTICS S-1FG1

Article No. : 1FG1102-1QD23-2AD1-Z
D01+K12+N23

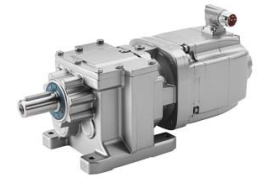


Figure similar

Client order no. :
Order no. :
Offer no. :
Remarks :

Item no. :
Consignment no. :
Project :

Gearbox data

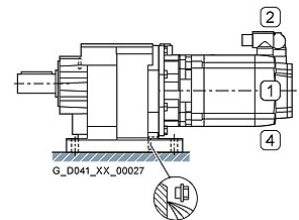
Gear box type	Z29
Gearbox basic type	Helical geared Z / D
Gearbox size	29
Transmission stages	2
Transmission (ratio)	4.82
Gear number relation	135/28
Output moment maximum (short-time)	48 Nm
max. input speed (briefly)	4,500 rpm
Output speed short-time	934 rpm
Emergency off output moment (1000 cycles)	146 Nm
Radial force maximum	1,090 N
Max. permissible radial force with Mmax	1,090 N
Moment of inertia	0.50 kgcm ²
Torsional stiffness	6 Nm/°
Efficiency	0.96
Mounting position	M1
Mounting type	Foot-mounted
Output shaft version	Solid shaft standard
Output shaft dimension	V25 x 50 mm
Gearbox flange diameter	-/-
Output shaft bearing	No
Figure 2 torque support	-

General tech. specifications

Color of the housing	Standard painting (Anthracite RAL 7016)
Specification	CE / UL / CSA / EAC / cRUus
Net weight	10.36 kg
1 m-sound pressure level L _{pA} (Tol.+3dB(A))	65
Plug position	top (default) (2)
Adapter flange position	top (default) (2)

Lubrication and sealing

Gear oil	Synthetic oil CLP PAO VG220
Output shaft sealing	Standard
Oil charge	0.20 l



Motor data

Motor type	Permanent-magnet synchronous motor
Motor type	Compact
DC-link voltage, max.	510...720V
Shaft height	48 mm
Cooling	Natural cooling
Rated speed	3,000 rpm
Rated torque (100K)	2.35 Nm
Rated power	0.74 kW
Rated current (100K)	1.85 A
Static torque	2.85 Nm
Static current	2.10 A
Moment of inertia	3.20000 kgcm ²
Efficiency η	89 %
Temperature monitoring	Pt1000 temperature sensor
Connector size	1
Degree of protection	IP65
Encoder system	Encoder AS20DQI: absolute encoder single-turn 20 bits

Limiting data

Maximum speed (short-time)	9,000 rpm
Maximum torque	10.50 Nm
Motor current short term	7.6 A

Optimum operating point

Optimum speed	3,000 rpm
Optimum power	0.74 kW

Data sheet for SIMOTICS S-1FG1

Article No. : 1FG1102-1QD23-2AD1-Z
D01+K12+N23

Recommended Motor Module

Rated inverter current	3.0 A
Maximum inverter current	9.0 A
Maximum torque	10.5 Nm

Holding brake

Holding brake	with holding brake
Holding brake version	Permanent-magnet brake
Power supply voltage	DC 24 V \pm 10 %
Dynamic braking torque M_{1Br}	3.00 Nm
Holding torque M_{4Br}	4.00 Nm
Rated current	0.5 A
Opening time	70.0 ms
Closing time	30.0 ms
Maximum switching energy per braking action	150.0 J

Standards

Compliance with standards	CE / UL / CSA / EAC / cRUus
CE marking	EN 60034

Options

- D01 M1 for helical and parallel shaft gearboxes
- K12 Poly-alpha-olefin oil CLP ISO PAO VG220
- N23 Standard holding brake (permanent magnet brake)

Info servo geared motor

Outside the standard temperature range of -10 to +40 °C, further selectable options must be observed, in addition to the lubricant selection.

Further, you have to check the suitability of the components and options used for the requested temperature range.