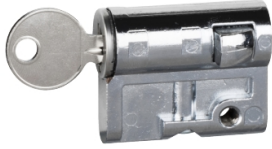


# Product datasheet

Specifications



## Barrel and key 405 for retractable handle of 3 point lock PLM version or PLD

Local distributor code:  
398324728

NSYTCL405ME

EAN Code: 3606480192586

### Main

Range	PanelSeT
Accessory / separate part category	Locking accessory
Product or component type	Cylindrical barrel
Application	Multi-purpose
Mounting support	Direct mounting on door
Product compatibility	NSYPLM...V version PLD enclosures
Range compatibility	PanelSeT PLM PanelSeT PLD
Device composition	1 cylindrical barrel 2 key

### Complementary

Quantity per set	Set of 1
Lock type	Key lock
Type of keylock	Cylindrical
Key number	405

### Packing Units

Unit Type of Package 1	PCE
Number of Units in Package 1	1
Package 1 Height	3.000 cm
Package 1 Width	14.000 cm
Package 1 Length	10.000 cm
Package 1 Weight	50.000 g

### Logistical informations

Country of origin	ES
-------------------	----

### Contractual warranty

Warranty (in months)	18
----------------------	----



## Environmental Data

Schneider Electric aims to achieve Net Zero status by 2050 through supply chain partnerships, lower impact materials, and circularity via our ongoing “Use Better, Use Longer, Use Again” campaign to extend product lifetimes and recyclability.

[Environmental Data explained >](#)

[How we assess product sustainability >](#)

### Use Better



#### Materials and Substances

Packaging made with recycled cardboard	No
Packaging without single use plastic	No
SCIP Number	B275ac6d-38de-4397-a911-e79c04976382
EU RoHS Directive	<a href="#">Compliant By Exemption</a>
REACH Regulation	<a href="#">Reference contains Substances of Very High Concern above the threshold</a>

### Use Longer



#### Lifetime extension

Repair	No
--------	----

### Use Again



#### Repack and remanufacture

Take-back	No
-----------	----

Image of product / Alternate images

Alternative

---

