

Product datasheet

Specifications



Roof Connected Cooling Unit, Climasys CU, 1,2kW, 230V, 50/60Hz, IP54

NSYCU1K2RDG

EAN Code: 3606486055397

Main

Range	ClimaSys
Product name	CU
mounting type	Roof of enclosure
Product or component type	Cooling unit
Installation	Indoor roof
Product destination	For enclosure
Mounting mode	By screws
Supply Voltage	220...240 V 1 phase 50 Hz EN/IEC 230 V +/- 6 % 1 phase 60 Hz UL
Rated Power	1250 W
Cooling power	1250 W 50/60 Hz L35-L35 800 W 50/60 Hz L35-L50

Complementary

Height	412 mm
Width	595 mm
Depth	395 mm
[In] rated current	4.3 A
Inrush current	16 A
Power consumption in W	650 W at 50/60 Hz, L35-L35 700 W at 50/60 Hz, L35-L50
Energy efficiency ratio	1.9
Control type	Electronic controller
Temperature setting range	20...50 °C at 50/60 Hz
Ambient air temperature for operation	20...50 °C at 50/60 Hz inside the enclosure: 5...55 °C at 50/60 Hz outside the enclosure:
Noise level	70 dB
Pressure	32 bar
Flow rate	Internal circuit: 850 m3/h at 50/60 Hz External circuit: 850 m3/h at 50/60 Hz
Net weight	34.5 kg
Cooling gas type	R134a (0.156 kg)
Type of filter	Optional external circuit filter
Recommended circuit breaker protection	M9F23116

Thermal protection Recommended (fuse)	1 phase 15 A (T)
Material	Steel
Colour	Grey (RAL 7035)

Environment

Product certifications	UL IEC EN
Directives	2006/42/EC - machinery 2014/30/EU - electromagnetic compatibility 2011/65/EU - RoHS
Standards	EN/ISO 12100 EN 60335-1 EN 60335-2-40 EN 61000-3-2 EN 61000-3-3 EN 61000-6-2 EN 61000-6-3 EN/IEC 63000:2018 EN 14511
IP degree of protection	IP54 conforming to IEC 60529 (on the internal circuit) IP24 conforming to IEC 60529 (on the external circuit)

Packing Units

Unit Type of Package 1	PCE
Number of Units in Package 1	1
Package 1 Height	46.000 cm
Package 1 Width	48.000 cm
Package 1 Length	62.000 cm
Package 1 Weight	37.000 kg
Unit Type of Package 2	P12
Number of Units in Package 2	4
Package 2 Height	111.000 cm
Package 2 Width	80.000 cm
Package 2 Length	120.000 cm
Package 2 Weight	165.000 kg

Contractual warranty

Warranty (in months)	18
-----------------------------	----



Environmental Data

Schneider Electric aims to achieve Net Zero status by 2050 through supply chain partnerships, lower impact materials, and circularity via our ongoing “Use Better, Use Longer, Use Again” campaign to extend product lifetimes and recyclability.

[Environmental Data explained >](#)

[How we assess product sustainability >](#)



Environmental footprint

Total lifecycle Carbon footprint	3 295 kg CO2 eq.
Carbon footprint of the manufacturing phase [A1 to A3]	140 kg CO2 eq.
Carbon footprint of the distribution phase [A4]	4 kg CO2 eq.
Carbon footprint of the installation phase [A5]	5 kg CO2 eq.
Carbon footprint of the use phase [B2, B3, B4, B6]	3 075 kg CO2 eq.
Carbon footprint of the end-of-life phase [C1 to C4]	72 kg CO2 eq.

Use Better



Materials and Substances

F-gas free	Product containing F-gas
Packaging made with recycled cardboard	Yes
Packaging without single use plastic	No
EU RoHS Directive	Compliant
REACH Regulation	Free of Substances of Very High Concern above the threshold

Use Longer




Lifetime extension

Repair	No
--------	----

Use Again

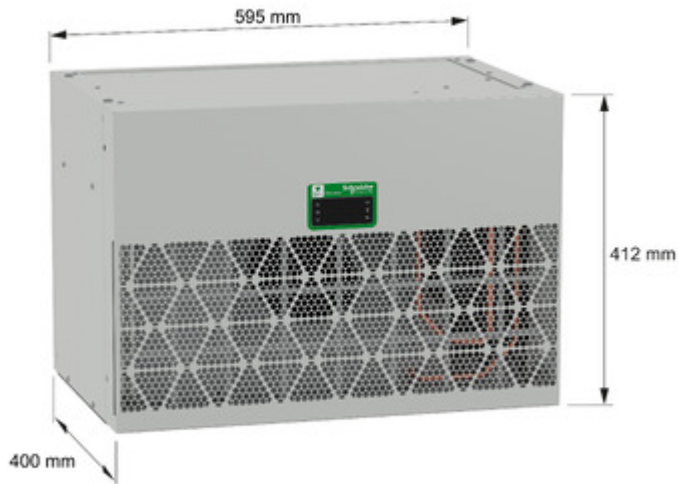


Repack and remanufacture

Recyclability potential, in %	89
End of life manual availability	End of Life Information
Take-back	Nej
WEEE Label	 The product must be disposed on European Union markets following specific waste collection and never end up in rubbish bins

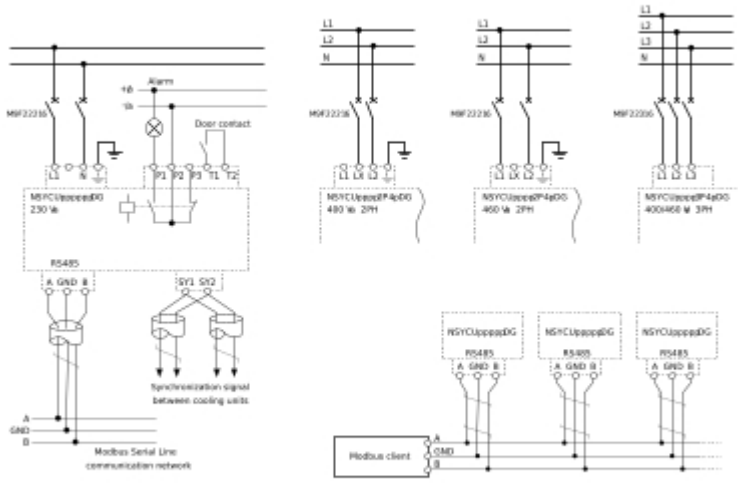
Technical Illustration

Dimensions



Technical Illustration

Wiring diagram



Offer Marketing Illustration

Product benefits / Features

The illustration features a central image of three different models of cooling units: a tall rack-mounted unit, a medium-sized rack-mounted unit, and a smaller floor-standing unit. Surrounding these units are six circular icons, each with a corresponding text description of a product benefit or feature.

- Connected with alarming and setting data**: Represented by an icon of a speaker with sound waves.
- Easy selection with 40 references IEC & UL**: Represented by an icon of four checkboxes, with the top two checked.
- 3 redundant modes for critical application**: Represented by an icon of a three-tiered server rack.
- Recycled packaging, good energy efficiency ratio**: Represented by an icon of a recycling symbol.
- 30% Smaller and lighter Cooling Units**: Represented by an icon of a square with a diagonal line and a smaller square inside.
- Easy mounting with 3 positions, easy spare parts replacement**: Represented by an icon of a clock with a checkmark.

Offer Marketing Illustration

Energy Label



Technical Illustration

Exploded view



Technical Illustration

Exploded view



Image of product / Alternate images

Alternative





