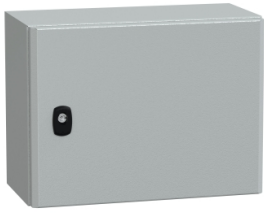


Product datasheet

Specifications



"Wall mounted steel enclosure,
PanelSeT S3D, plain door, with
mounting plate, 300x400x200mm,
IP66, IK10"

Local distributor code:

392866020

NSYS3D3420P

EAN Code: 3606480159657

Main

Range	PanelSeT
Product name	PanelSeT S3D
Application	Multi-purpose
Category	Compact enclosure
Enclosure nominal height	300 mm
Enclosure nominal width	400 mm
Enclosure nominal depth	200 mm
Door type	Plain
Mounting plate description	Plain
Type of gland plate	Standard
Installation accessory type	Wall-mounting
Device composition	1 body 1 mounting plate 1 door with lock 1 cable gland plate

Complementary

body type	Single piece body Gutter-shaped front rail double sheet thickness
Number of doors	Front face: 1 door(s)
Door opening side	Reversible (120 °)
Lock type	3 mm double-bar lock
Accessibility for operation	Front
Removable parts	Door by hinges Cable gland plate by screws Mounting plate by fixing element
Material	Enclosure: steel Mounting plate: galvanised steel
Surface finish	Enclosure: epoxy-polyester powder
Colour	Enclosure: grey (RAL 7035)
Standards	IEC 62208 UL CUL

Disclaimer: This documentation is not intended as a substitute for and is not to be used for determining suitability or reliability of these products for specific user applications

Product certifications	DNV BV UL cUL GL
-------------------------------	------------------------------

Net weight	6.8 kg
-------------------	--------

Environment

NEMA degree of protection	NEMA 4X/13
----------------------------------	------------

IK degree of protection	IK10 conforming to IEC 62262
--------------------------------	------------------------------

IP degree of protection	IP66 conforming to IEC 60529
--------------------------------	------------------------------

Packing Units

Unit Type of Package 1	PCE
-------------------------------	-----

Number of Units in Package 1	1
-------------------------------------	---

Package 1 Height	25.000 cm
-------------------------	-----------

Package 1 Width	32.000 cm
------------------------	-----------

Package 1 Length	41.500 cm
-------------------------	-----------

Package 1 Weight	6.854 kg
-------------------------	----------

Unit Type of Package 2	P12
-------------------------------	-----

Number of Units in Package 2	22
-------------------------------------	----

Package 2 Height	97.000 cm
-------------------------	-----------

Package 2 Width	80.000 cm
------------------------	-----------

Package 2 Length	120.000 cm
-------------------------	------------

Package 2 Weight	162.000 kg
-------------------------	------------

Logistical informations

Country of origin	FR
--------------------------	----

Contractual warranty

Warranty (in months)	18
-----------------------------	----



Environmental Data

Schneider Electric aims to achieve Net Zero status by 2050 through supply chain partnerships, lower impact materials, and circularity via our ongoing “Use Better, Use Longer, Use Again” campaign to extend product lifetimes and recyclability.

[Environmental Data explained >](#)

[How we assess product sustainability >](#)



Environmental footprint

Total lifecycle Carbon footprint	65 kg CO2 eq.
Carbon footprint of the manufacturing phase [A1 to A3]	33 kg CO2 eq.
Carbon footprint of the distribution phase [A4]	14 kg CO2 eq.
Carbon footprint of the installation phase [A5]	1 kg CO2 eq.
Carbon footprint of the use phase [B2, B3, B4, B6]	0 kg CO2 eq.
Carbon footprint of the end-of-life phase [C1 to C4]	16 kg CO2 eq.
Environmental Disclosure	Product Environmental Profile

Use Better



Materials and Substances

Packaging made with recycled cardboard	No
Packaging without single use plastic	No
SCIP Number	E893f0a0-d2cc-4011-9425-3873dde70142
EU RoHS Directive	Compliant
REACH Regulation	Free of Substances of Very High Concern above the threshold

Use Longer



Lifetime extension

Repair	No
--------	----

Use Again

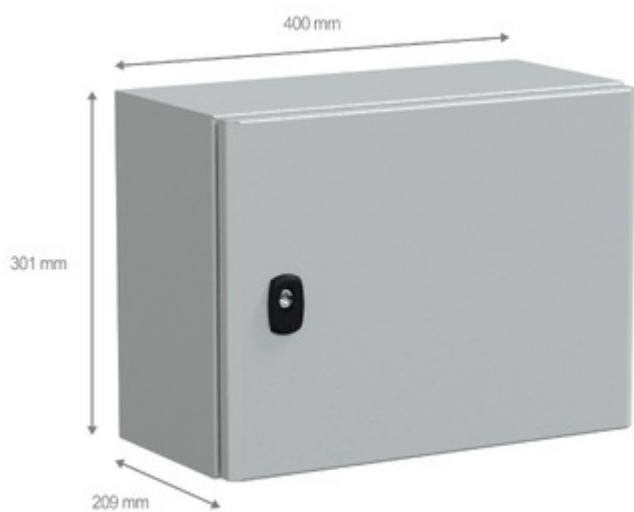


Repack and remanufacture

Recyclability potential, in %	98
End of life manual availability	No need of specific recycling operations
Take-back	Nej

Technical Illustration

Dimensions



Offer Marketing Illustration

Product benefits / Features

Sturdy components' protection

Earthing studs included

Large choice of dimensions & accessories

Quality & aesthetics

Easy to equip
Easy to maintain

Reusable eco-friendly packaging