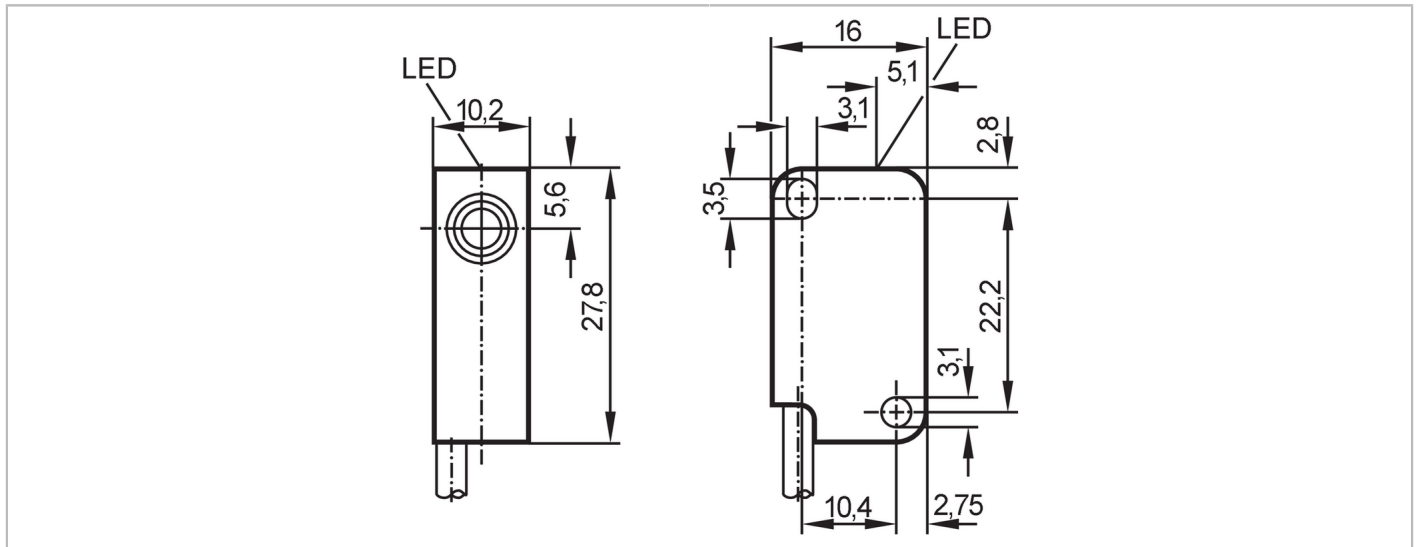


# IS5096



## Inductive sensor

IS-3002-BPKG/0,2M



Product characteristics	
Electrical design	PNP
Output function	normally open
Sensing range [mm]	2
Housing	rectangular
Dimensions [mm]	27.8 x 10.2 x 16
Electrical data	
Operating voltage [V]	10...30 DC; ("supply class 2" to cULus)
Current consumption [mA]	< 15
Protection class	III
Reverse polarity protection	yes
Outputs	
Electrical design	PNP
Output function	normally open
Max. voltage drop switching output DC [V]	2.5
Permanent current rating of switching output DC [mA]	200
Switching frequency DC [Hz]	800
Short-circuit protection	yes
Type of short-circuit protection	pulsed
Overload protection	yes
Detection zone	
Sensing range [mm]	2
Real sensing range $S_r$ [mm]	(1,8...3,2)
Operating distance [mm]	0...1.6
Accuracy / deviations	
Correction factor	steel: 1 / stainless steel: 0.7 / brass: 0.4 / aluminium: 0.3 / copper: 0.2

# IS5096



## Inductive sensor

IS-3002-BPKG/0,2M

Hysteresis	[% of Sr]	3...15
Switch point drift	[% of Sr]	-10...10

### Operating conditions

Ambient temperature	[°C]	-25...80
Protection		IP 67

### Tests / approvals

EMC	EN 61000-4-2 ESD	8 kV AD
	EN 61000-4-3 HF radiated	3 V/m
	EN 61000-4-4 Burst	2 kV
	EN 61000-4-6 HF conducted	3 V
	EN 55011 emission	class B
MTTF	[years]	3044
UL approval	Ta	-25...80 °C
	Enclosure type	Type 1
	power supply	Class 2
	File number UL	E174191

### Mechanical data

Weight	[g]	13.4
Housing		rectangular
Mounting		flush mountable
Dimensions	[mm]	27.8 x 10.2 x 16
Materials		housing: PBT; LED window: PC

### Displays / operating elements

Display	switching status	1 x LED, yellow
---------	------------------	-----------------

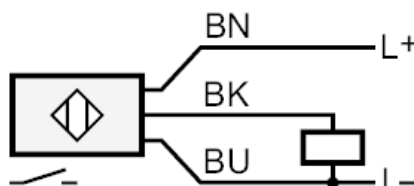
### Remarks

Pack quantity		1 pcs.
---------------	--	--------

### Electrical connection

Cable: 0.2 m, PUR, Ø 3.4 mm; 3 x 0.14 mm<sup>2</sup>

### Connection



Core colours :  
BN = brown  
BU = blue  
BK = black