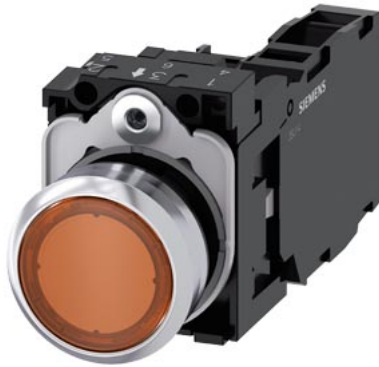




Illuminated pushbutton, 22 mm, round, metal, shiny, amber, pushbutton, flat, momentary contact type, with holder, 1 NO+1 NC, LED module with integrated LED 110 V AC, screw terminal



|  |  |
|--|--|
| <b>product brand name</b>  | SIRIUS ACT   |
| <b>product designation</b>   | Illuminated pushbuttons  |
| <b>design of the product</b>   | Complete unit  |
| <b>product type designation</b>  | 3SU1   |
| <b>product line</b>  | Metal, shiny, 22 mm  |
| <b>manufacturer's article number</b>   |  |
| <ul style="list-style-type: none"> <li>• of supplied contact module at position 1</li> <li>• of supplied LED module</li> <li>• of the supplied holder</li> <li>• of the supplied actuator</li> </ul> | <a href="#">3SU1400-1AA10-1FA0</a><br><a href="#">3SU1401-1BC00-1AA0</a><br><a href="#">3SU1550-0AA10-0AA0</a><br><a href="#">3SU1051-0AB00-0AA0</a> |
| <b>number of command points</b>  | 1  |
| <b>Actuator</b>  |  |
| <b>design of the actuating element</b>   | Button, flat   |
| <b>principle of operation of the actuating element</b>   | momentary contact type   |
| product extension optional light source  | Yes  |
| color of the actuating element   | amber  |
| <b>material of the actuating element</b>   | plastic  |
| <b>shape of the actuating element</b>  | round  |
| <b>outer diameter of the actuating element</b>   | 29.45 mm   |
| <b>number of contact modules</b>   | 1  |
| <b>Front ring</b>  |  |
| <b>product component front ring</b>  | Yes  |
| <b>design of the front ring</b>  | Standard   |
| <b>material of the front ring</b>  | Metal, high gloss  |
| <b>color of the front ring</b>   | silver   |
| <b>Holder</b>  |  |
| <b>material of the holder</b>  | Plastic  |
| <b>Display</b>   |  |
| <b>number of LED modules</b>   | 1  |
| <b>General technical data</b>  |  |
| product function positive opening  | Yes  |
| product component light source   | Yes  |
| <b>insulation voltage rated value</b>  | 320 V  |
| <b>degree of pollution</b>   | 3  |
| type of voltage of the operating voltage   | AC/DC  |
| <b>surge voltage resistance rated value</b>  | 4 kV   |

|   |   |
|---|---|
| <b>protection class IP</b>                                | IP66, IP67, IP69(IP69K)   |
| protection class IP of the terminal                       | IP20, clamping screw tightened  |
| <b>degree of protection NEMA rating</b>                   | 1, 2, 3, 3R, 4, 4X, 12, 13  |
| <b>shock resistance</b>                                   |   |
| • according to IEC 60068-2-27                             | sinusoidal half-wave 15g / 11 ms  |
| <b>vibration resistance</b>                               |   |
| • according to IEC 60068-2-6                              | 10 ... 500 Hz: 5g   |
| <b>operating frequency maximum</b>                        | 3 600 1/h   |
| <b>mechanical service life (operating cycles) typical</b> | 3 000 000   |
| electrical endurance (operating cycles) typical           | 10 000 000  |
| <b>thermal current</b>                                    | 10 A  |
| <b>reference code according to IEC 81346-2</b>            | S   |
| <b>continuous current of the C characteristic MCB</b>     | 10 A; for a short-circuit current smaller than 400 A  |
| <b>continuous current of the quick DIAZED fuse link</b>   | 10 A  |
| <b>continuous current of the DIAZED fuse link gG</b>      | 10 A  |
| <b>Substance Prohibitance (Date)</b>                      | 10/01/2014  |
| <b>SVHC substance name</b>                                | Lead monoxide (lead oxide) CAS-No. 1317-36-8<br>2-methyl-1-(4-methylthiophenyl)-2-morpholinopropan-1-one CAS-No. 71868-10-5 |
| <b>Net Weight</b>   | 84 g  |
| <b>operating voltage</b>                                  |   |
| • at AC   |   |
| — at 50 Hz rated value                                    | 5 ... 500 V   |
| — at 60 Hz rated value                                    | 5 ... 500 V   |
| • at DC rated value                                       | 5 ... 500 V   |
| <b>Power Electronics</b>                                  |   |
| <b>contact reliability</b>                                | One maloperation per 100 million (17 V, 5 mA), one maloperation per 10 million (5 V, 1 mA)                                  |
| <b>Supply voltage</b>                                     |   |
| type of voltage of the supply voltage of the light source | AC  |
| <b>supply voltage of the light source at AC</b>           |   |
| • at 50 Hz rated value                                    | 110 V   |
| • at 60 Hz rated value                                    | 110 V   |
| <b>Control circuit/ Control</b>                           |   |
| <b>inrush current of LED module maximum</b>               | 3 A   |
| <b>Auxiliary circuit</b>                                  |   |
| <b>design of the contact of auxiliary contacts</b>        | Silver alloy  |
| <b>number of NC contacts for auxiliary contacts</b>       | 1   |
| <b>number of NO contacts for auxiliary contacts</b>       | 1   |
| <b>Connections/ Terminals</b>                             |   |
| <b>type of electrical connection</b>                      | screw terminal  |
| • of modules and accessories                              | Screw-type terminal   |
| <b>type of connectable conductor cross-sections</b>       |   |
| • solid with core end processing                          | 2x (0.5 ... 0.75 mm <sup>2</sup> )  |
| • solid without core end processing                       | 2x (1.0 ... 1.5 mm <sup>2</sup> )   |
| • finely stranded with core end processing                | 2x (0.5 ... 1.5 mm <sup>2</sup> )   |
| • finely stranded without core end processing             | 2x (1,0 ... 1,5 mm <sup>2</sup> )   |
| • for AWG cables  | 2x (18 ... 14)  |
| <b>tightening torque of the screws in the bracket</b>     | 1 ... 1.2 N·m   |
| tightening torque with screw-type terminals               | 0.8 ... 0.9 N·m   |
| <b>Lamp</b>   |   |
| <b>type of light source</b>                               | LED   |
| <b>color of the light source</b>                          | amber   |
| <b>light intensity</b>                                    | 450 ... 1 120 mcd   |
| <b>Safety related data</b>                                |   |
| product function suitable for safety function             | Yes   |
| <b>test wear-related service life necessary</b>           | Yes   |
| <b>proportion of dangerous failures</b>                   |   |
| • with low demand rate according to SN 31920              | 20 %  |

|  |           |
|--|-----------|
| <ul style="list-style-type: none"> <li>with high demand rate per NC contact according to SN 31920</li> </ul> | 20 %      |
| <ul style="list-style-type: none"> <li>with high demand rate per NO contact according to SN 31920</li> </ul> | 50 %      |
| <b>B10 value with high demand rate according to SN 31920</b>   | 3 000 000 |
| <b>failure rate [FIT] with low demand rate per NC contact according to SN 31920</b>                          | 100 FIT   |
| <b>ISO 13849</b>   |           |
| <b>device type according to ISO 13849-1</b>  | 3         |
| <b>IEC 61508</b>   |           |
| <b>safety device type according to IEC 61508-2</b>   | Type A    |
| T1 value for proof test interval or service life according to IEC 61508                                      | 20 a      |

|  |  |
|--|--|
| <b>Ambient conditions</b>  |  |
| <b>ambient temperature</b>   |  |
| <ul style="list-style-type: none"> <li>during operation</li> <li>during storage</li> </ul> | -25 ... +70 °C<br>-40 ... +80 °C   |
| environmental category during operation according to IEC 60721                             | 3M6, 3S2, 3B2, 3K6 (with relative air humidity of 10 ... 95%, no condensation in operation permitted for all devices behind front panel) |

|  |                      |
|--|----------------------|
| <b>Installation/ mounting/ dimensions</b>                                    |                      |
| <b>fastening method</b>  | front plate mounting |
| <ul style="list-style-type: none"> <li>of modules and accessories</li> </ul> | Front plate mounting |
| <b>height</b>  | 40 mm                |
| <b>width</b>   | 30 mm                |
| <b>shape of the installation opening</b>                                     | round                |
| <b>mounting diameter</b>   | 22.3 mm              |
| <b>positive tolerance of installation diameter</b>                           | 0.4 mm               |
| <b>mounting height</b>   | 11 mm                |
| <b>installation width</b>  | 29.5 mm              |
| <b>installation depth</b>  | 71.7 mm              |

|  |   |
|--|---|
| <b>Approvals Certificates</b>  |   |
| Environmental Product Declaration  |   |
| <ul style="list-style-type: none"> <li>global warming potential [CO2 eq] / during manufacturing</li> <li>global warming potential [CO2 eq] / during operation</li> <li>global warming potential [CO2 eq] / after end of life</li> <li>global warming potential [CO2 eq] / total</li> </ul> | 0.625 kg<br>0.235 kg<br>-0.267 kg<br>0.593 kg |

|                    |                                 |
|--------------------|---------------------------------|
| <b>Environment</b> | <b>General Product Approval</b> |
|--------------------|---------------------------------|



Siemens EcoTech



[Environmental Confirmations](#)



|                                 |                          |                             |
|---------------------------------|--------------------------|-----------------------------|
| <b>General Product Approval</b> | <b>Test Certificates</b> | <b>Maritime application</b> |
|---------------------------------|--------------------------|-----------------------------|



[Special Test Certificate](#)

[Type Test Certificates/Test Report](#)



|                             |              |
|-----------------------------|--------------|
| <b>Maritime application</b> | <b>other</b> |
|-----------------------------|--------------|



[Confirmation](#)

|                            |
|----------------------------|
| <b>Further information</b> |
|----------------------------|

Information on the packaging

<https://support.industry.siemens.com/cs/ww/en/view/109813875>

Information for data generation and storage

<https://support.industry.siemens.com/cs/ww/en/view/109995012>

Information- and Downloadcenter (Catalogs, Brochures,...)

<https://www.siemens.com/ic10>

Industry Mall (Online ordering system)

<https://mall.industry.siemens.com/mall/en/en/Catalog/product?mlfb=3SU1153-0AB00-1FA0>

Cax online generator

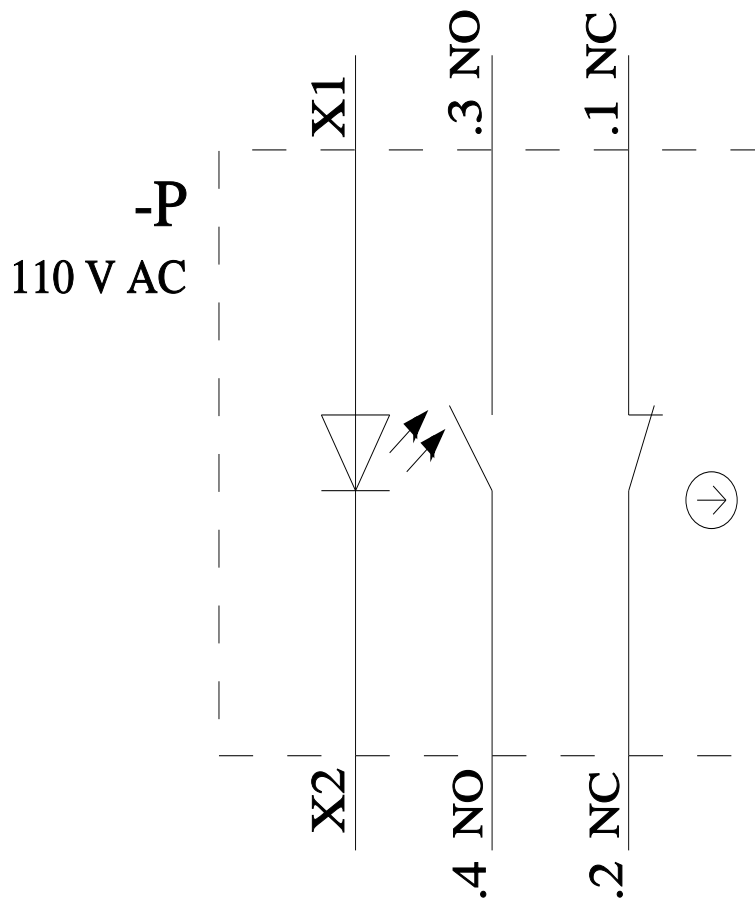
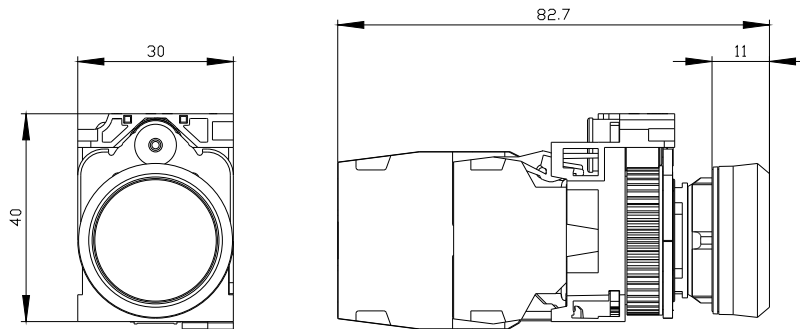
<https://support.automation.siemens.com/WW/CAXorder/default.aspx?lang=en&mlfb=3SU1153-0AB00-1FA0>

Service&Support (Manuals, Certificates, Characteristics, FAQs,...)

<https://support.industry.siemens.com/cs/ww/en/ps/3SU1153-0AB00-1FA0>

Image database (product images, 2D dimension drawings, 3D models, device circuit diagrams, EPLAN macros, ...)

[https://www.automation.siemens.com/bilddb/cax\\_de.aspx?mlfb=3SU1153-0AB00-1FA0&lang=en](https://www.automation.siemens.com/bilddb/cax_de.aspx?mlfb=3SU1153-0AB00-1FA0&lang=en)



last modified:

7/22/2025