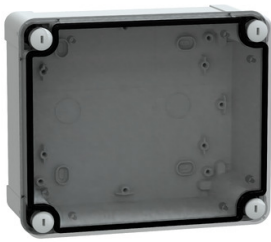


Product datasheet

Specifications



ABS box IP66 IK07 RAL7035 Int.H175W150D80 Ext.H193W164D87 Transp.cover H20

Local distributor code:

387531535

NSYTBS19168T

EAN Code: 3606480165467

Main

Range	PanelSeT
Device application	Multi-purpose
Category	Industrial box
Height	192 mm
Width	164 mm
Depth	87 mm
Internal height	175 mm
Internal width	150 mm
Internal depth	80 mm
Enclosure mounting	Wall mounted
Device composition	1 body 1 cover 4 cover screw
Body type	One piece moulded
Type of front cover	Low transparent cover
Cover fixing	Plastic screws
Lock type	Captive screw flat outside sealed area
Removable parts	Cover by captive screws

Complementary

Material	ABS with 45% of post-industrial recycled content
Colour	Grey (RAL 7035) Transparent
Standards	IEC 62208
Product certifications	TÜV
Electrical insulation class	Class II
IP degree of protection	IP66 conforming to NEMA 4.4X
IK degree of protection	IK07 conforming to IEC 62262
Glow wire resistance	650 °C conforming to IEC 60695-2-11
Ambient air temperature for storage	-15...40 °C
Operating temperature	-25...60 °C
Product weight	0.46 kg

Packing Units

Unit Type of Package 1	PCE
Number of Units in Package 1	1
Package 1 Height	10.000 cm
Package 1 Width	17.000 cm
Package 1 Length	20.500 cm
Package 1 Weight	467.000 g
Unit Type of Package 2	CAR
Number of Units in Package 2	20
Package 2 Height	40.000 cm
Package 2 Width	40.500 cm
Package 2 Length	60.500 cm
Package 2 Weight	10.600 kg
Unit Type of Package 3	P12
Number of Units in Package 3	240
Package 3 Height	134.500 cm
Package 3 Width	80.000 cm
Package 3 Length	120.000 cm
Package 3 Weight	132.000 kg

Logistical informations

Country of origin	HU
-------------------	----

Contractual warranty

Warranty (in months)	18
----------------------	----



Environmental Data

Schneider Electric aims to achieve Net Zero status by 2050 through supply chain partnerships, lower impact materials, and circularity via our ongoing “Use Better, Use Longer, Use Again” campaign to extend product lifetimes and recyclability.

[Environmental Data explained >](#)

[How we assess product sustainability >](#)



Environmental footprint

Total lifecycle Carbon footprint	4 kg CO2 eq.
Carbon footprint of the manufacturing phase [A1 to A3]	2 kg CO2 eq.
Carbon footprint of the distribution phase [A4]	0.9 kg CO2 eq.
Carbon footprint of the installation phase [A5]	0.1 kg CO2 eq.
Carbon footprint of the use phase [B2, B3, B4, B6]	0 kg CO2 eq.
Carbon footprint of the end-of-life phase [C1 to C4]	0.9 kg CO2 eq.
Environmental Disclosure	Product Environmental Profile

Use Better



Materials and Substances

Average percentage of recycled plastic content	45 %
Packaging made with recycled cardboard	No
Packaging without single use plastic	No
EU RoHS Directive	Compliant
REACH Regulation	Free of Substances of Very High Concern above the threshold

Use Longer



Lifetime extension

Repair	No
--------	----

Use Again



Repack and remanufacture

Recyclability potential, in %	1
End of life manual availability	No need of specific recycling operations
Take-back	No

Technical Illustration

Dimensions

