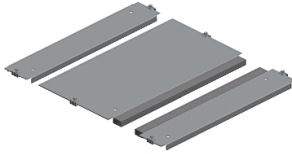


Product datasheet

Specifications



"One entry cable gland plate,
PanelSeT SFN, PanelSet SF, for
electrical enclosure W800 D600mm,
fixed by clips"

Local distributor code:

13313166

NSYEC861

EAN Code: 3606485126302

Main

Range	PanelSeT
Product or component type	Cable gland plate
Accessory / separate part category	Cable management accessory
Application	Electronic application Multi-purpose
Range compatibility	PanelSeT SF PanelSeT SFM
Mounting location	Enclosure bottom
Cable gland type	Standard
Cable entry	1 entry
Device composition	fixing elements 1 plate self extinguishing polyurethane adhesive gasket with cross-section of 15 x 25 mm
Quantity per set	Set of 1
Material	Galvanised steel

Complementary

Height	30 mm
Width	Nominal: 800 mm Useful: 616 mm
Depth	Nominal : 600 mm Real : 650 mm
thickness	1.5 mm

Packing Units

Unit Type of Package 1	PCE
Number of Units in Package 1	1
Package 1 Height	3.000 cm
Package 1 Width	34.500 cm
Package 1 Length	65.000 cm
Package 1 Weight	4.600 kg
Unit Type of Package 2	P12
Number of Units in Package 2	30
Package 2 Height	58.000 cm

Package 2 Width	80.000 cm
Package 2 Length	120.000 cm
Package 2 Weight	149.000 kg

Logistical informations

Country of origin	FR
-------------------	----

Contractual warranty

Warranty (in months)	18
----------------------	----



Environmental Data

Schneider Electric aims to achieve Net Zero status by 2050 through supply chain partnerships, lower impact materials, and circularity via our ongoing “Use Better, Use Longer, Use Again” campaign to extend product lifetimes and recyclability.

[Environmental Data explained >](#)

[How we assess product sustainability >](#)



Environmental footprint

Total lifecycle Carbon footprint	33 kg CO2 eq.
Carbon footprint of the manufacturing phase [A1 to A3]	20 kg CO2 eq.
Carbon footprint of the distribution phase [A4]	0.9 kg CO2 eq.
Carbon footprint of the installation phase [A5]	1 kg CO2 eq.
Carbon footprint of the use phase [B2, B3, B4, B6]	0 kg CO2 eq.
Carbon footprint of the end-of-life phase [C1 to C4]	11 kg CO2 eq.
Environmental Disclosure	Product Environmental Profile

Use Better



Materials and Substances

Packaging made with recycled cardboard	No
Packaging without single use plastic	No
SCIP Number	52da316e-d4e1-4114-85c0-32a03b2934fd
EU RoHS Directive	Compliant By Exemption
REACH Regulation	Reference contains Substances of Very High Concern above the threshold
PVC free	Yes
Silicone-free	No

Use Longer



Lifetime extension

Repair	No
--------	----

Use Again



Repack and remanufacture

Recyclability potential, in %	98
End of life manual availability	No need of specific recycling operations
Take-back	No