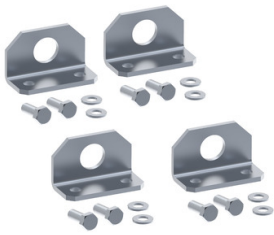


# Product datasheet

Specifications



## "Lifting brackets, PanelSeT SFN, PanelSet SF, set of 4"

Local distributor code:

383545415

NSYSFELB

EAN Code: 3606485131559

## Main

Area	PanelSeT
category	Lifting accessory
Product or component type	Lifting bracket
Application	Multi-purpose
Mounting location	Enclosure top
Mounting support	Directly in the axis of the uprights
Range compatibility	Prisma Prisma PH PanelSeT PanelSeT SFHD PanelSeT PanelSeT SFM
Device composition	4 bracket fixing elements
Quantity per set	Set of 1

## Complementary

Material	Steel
Surface finish	Zinc coated
Fixing mode	By screws - screw type M12
Permanent permissible load	500 kg
Height	60 mm
Width	100 mm
Depth	49 mm
Diameter	32 mm

## Packing Units

Unit Type of Package 1	PCE
Number of Units in Package 1	1
Package 1 Height	7.500 cm
Package 1 Width	9.000 cm
Package 1 Length	15.000 cm
Package 1 Weight	1.956 kg
Unit Type of Package 2	PAM
Number of Units in Package 2	250
Package 2 Height	49.000 cm

---

Package 2 Width	100.000 cm
-----------------	------------

---

Package 2 Length	120.000 cm
------------------	------------

---

Package 2 Weight	504.000 kg
------------------	------------

## Logistical informations

---

Country of origin	IN
-------------------	----

## Contractual warranty

---

Warranty (in months)	18
----------------------	----



## Environmental Data

Schneider Electric aims to achieve Net Zero status by 2050 through supply chain partnerships, lower impact materials, and circularity via our ongoing “Use Better, Use Longer, Use Again” campaign to extend product lifetimes and recyclability.

[Environmental Data explained >](#)

[How we assess product sustainability >](#)



### Environmental footprint

Total lifecycle Carbon footprint	14 kg CO2 eq.
Carbon footprint of the manufacturing phase [A1 to A3]	8 kg CO2 eq.
Carbon footprint of the distribution phase [A4]	0.4 kg CO2 eq.
Carbon footprint of the installation phase [A5]	0.4 kg CO2 eq.
Carbon footprint of the use phase [B2, B3, B4, B6]	0 kg CO2 eq.
Carbon footprint of the end-of-life phase [C1 to C4]	5 kg CO2 eq.
Environmental Disclosure	<a href="#">Product Environmental Profile</a>

## Use Better



### Materials and Substances

Packaging made with recycled cardboard	No
Packaging without single use plastic	No
EU RoHS Directive	<a href="#">Compliant</a>
REACH Regulation	<a href="#">Free of Substances of Very High Concern above the threshold</a>
PVC free	Yes
Silicone-free	No

## Use Longer



### Lifetime extension

Repair	No
--------	----

## Use Again



### Repack and remanufacture

Recyclability potential, in %	98
End of life manual availability	No need of specific recycling operations
Take-back	No

Image of product / Alternate images

Alternative

---

