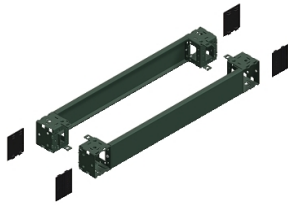


# Product datasheet

Specifications



## "Front & rear plinth, PanelSeT SFN, PanelSeT SF, PanelSeT SM, for electrical enclosure W1000mm, plinth H100mm"

Local distributor code:

398323237

NSYSPF10100

EAN Code: 3606485126586

## Main

Range	PanelSeT
Accessory / separate part category	Enclosure accessory
Product or component type	Plinth front
Application	Multi-purpose
Nominal dimensions of the housing	-
Device composition	fixing elements 4 corner cover 1 front panel 1 rear panel 4 corner
Range compatibility	PanelSeT SF PanelSeT SM PanelSeT S3D PanelSeT CRN PanelSeT SFN
Mounting support	Plinth side panels

## Complementary

Fixing mode	By fixing element - on structure location
Colour	Grey (RAL 7022)
Surface finish	Epoxy-polyester powder
Permanent permissible load	1300 kg
Height	100 mm
Width	Nominal: 1000 mm

## Environment

IP degree of protection	IP20 (complete plinth)
IK degree of protection	IK10

## Packing Units

Unit Type of Package 1	PCE
Number of Units in Package 1	1
Package 1 Height	11.500 cm
Package 1 Width	20.000 cm
Package 1 Length	102.000 cm

---

Package 1 Weight	5.800 kg
Unit Type of Package 2	PAL
Number of Units in Package 2	48
Package 2 Height	103.000 cm
Package 2 Width	102.000 cm
Package 2 Length	120.000 cm
Package 2 Weight	292.000 kg

---

## Logistical informations

---

Country of origin	TN
-------------------	----

## Contractual warranty

---

Warranty (in months)	18
----------------------	----



## Environmental Data

Schneider Electric aims to achieve Net Zero status by 2050 through supply chain partnerships, lower impact materials, and circularity via our ongoing “Use Better, Use Longer, Use Again” campaign to extend product lifetimes and recyclability.

[Environmental Data explained >](#)

[How we assess product sustainability >](#)



### Environmental footprint

Total lifecycle Carbon footprint	39 kg CO2 eq.
Carbon footprint of the manufacturing phase [A1 to A3]	24 kg CO2 eq.
Carbon footprint of the distribution phase [A4]	1 kg CO2 eq.
Carbon footprint of the installation phase [A5]	1 kg CO2 eq.
Carbon footprint of the use phase [B2, B3, B4, B6]	0 kg CO2 eq.
Carbon footprint of the end-of-life phase [C1 to C4]	13 kg CO2 eq.
Environmental Disclosure	<a href="#">Product Environmental Profile</a>

## Use Better



### Materials and Substances

Packaging made with recycled cardboard	No
Packaging without single use plastic	No
SCIP Number	52da316e-d4e1-4114-85c0-32a03b2934fd
EU RoHS Directive	<a href="#">Compliant By Exemption</a>
REACH Regulation	<a href="#">Reference contains Substances of Very High Concern above the threshold</a>
PVC free	Yes
Silicone-free	No

## Use Longer



### Lifetime extension

Repair	No
--------	----

## Use Again



### Repack and remanufacture

Recyclability potential, in %	98
End of life manual availability	No need of specific recycling operations
Take-back	No