

Product datasheet

Specifications



Fast charging station, EVlink Pro DC, 60kW wallbox, CCS2 + CCS2 connectors, 3.6m cable range with cable management system

EVD1S60TBB

EAN Code: 3606482455443

Main

Range	EVlink
Product name	EVlink Pro DC
Product or component type	Fast charging station
Type of installation	Indoor/outdoor
Poles description	3P + N + E

Complementary

Range compatibility	EVlink EVlink Field Services EVlink EVlink Load Management System
Device application	Electrical Vehicle charger
Mounting location	Wall mounting Floor stand with pedestal (to be ordered separately)
Earthing system	TN-S TN-C-S TT Compatible IT with additional isolation transformer on the power supply
[Us] rated supply voltage	380...415 V AC at 50 Hz, 3 phases + neutral
Input current	97...107 A
Nominal output power	SAE CCS Combo 2: 60 kW at 1.5...200 A150...1000 V DC
Output type	Side: 2 charging cable of 3.6 m
Number of outputs	2
Connector type	SAE CCS Combo 2
Provided equipment	1 energy meter per output
Cable management system	With
Protection type	Short-circuit protection on output Overload protection Ground fault protection Residual current breaker with overcurrent protection (RCBO) Temperature rise protection
Access control system	RFID authentication card RFID conforming to ISO/IEC 14443 A and B RFID authentication card NFC Free access QR code/application
Contactless payment terminal	Without
Display type	LCD touch screen : 7 inch

Disclaimer: This documentation is not intended as a substitute for and is not to be used for determining suitability or reliability of these products for specific user applications

Main user language (constantly evolving)	Danish Dutch English French German Norwegian Spanish
Control button type	Charge interruption button
Material	Enclosure: stainless steel 304 Aluminium
Colour	Front face: signal white (RAL 9003) Body: black (Pantone black C)
Efficiency	95 %
Power factor	0.99
Ambient air temperature for operation	-30...55 °C (with derating above 50 °C)
Height	1204 mm
Width	1303 mm
Depth	339 mm
Net weight	131 kg (without power module) 161 kg (with power module)
Services	Commercial service plan Commissioning service Warranty extension up to 5 years Repair service
Ethernet service	Web browser
Communication port protocol	OCPP 1.6 Modbus TCP Ethernet TCP/IP
Communication network type	4G WLAN Ethernet TCP/IP Wi-Fi

Environment

Electromagnetic compatibility	Immunity for industrial environments: Emission standard for industrial environments:
IP degree of protection	IP55
IK degree of protection	IK10 Screen: IK08
Ambient air temperature for storage	-40...70 °C
Operating altitude	0...2000 m
Relative humidity	5...95 %, without condensation
Standards	IEC 61851-1:ed. 3 IEC 61851-23:ed. 1 IEC 62196-1 IEC 62196-3 EN/IEC 61000-6-2:2005 EN/IEC 61000-6-4:class A ISO 15118-2 DIN 70121 VDV 261
Atmospheric-corrosivity category	C3

Packing Units

Unit Type of Package 1	PCE
Number of Units in Package 1	1
Package 1 Height	76.500 cm
Package 1 Width	111.000 cm
Package 1 Length	125.000 cm
Package 1 Weight	193.999 kg

Logistical informations

Country of origin CN



Environmental Data

Schneider Electric aims to achieve Net Zero status by 2050 through supply chain partnerships, lower impact materials, and circularity via our ongoing “Use Better, Use Longer, Use Again” campaign to extend product lifetimes and recyclability.

[Environmental Data explained >](#)

[How we assess product sustainability >](#)



Environmental footprint

Total lifecycle Carbon footprint	101 ton CO2 eq.
Carbon footprint of the manufacturing phase [A1 to A3]	0 kg CO2 eq.
Carbon footprint of the distribution phase [A4]	0 kg CO2 eq.
Carbon footprint of the installation phase [A5]	0 kg CO2 eq.
Carbon footprint of the use phase [B2, B3, B4, B6]	0 kg CO2 eq.
Carbon footprint of the end-of-life phase [C1 to C4]	0 kg CO2 eq.
Environmental Disclosure	Product Environmental Profile

Use Better



Materials and Substances

Packaging made with recycled cardboard	No
Packaging without single use plastic	No
SCIP Number	5ac9138c-a36d-4dcb-9d64-4a599808ae5a
EU RoHS Directive	Compliant By Exemption
REACH Regulation	Reference contains Substances of Very High Concern above the threshold

Use Longer



Lifetime extension

Repair	No
--------	----

Use Again



Repack and remanufacture

Recyclability potential, in %	70
End of life manual availability	End of Life Information
Removable battery	No
Take-back	No
WEEE Label	 The product must be disposed on European Union markets following specific waste collection and never end up in rubbish bins

Technical Illustration

Dimensions

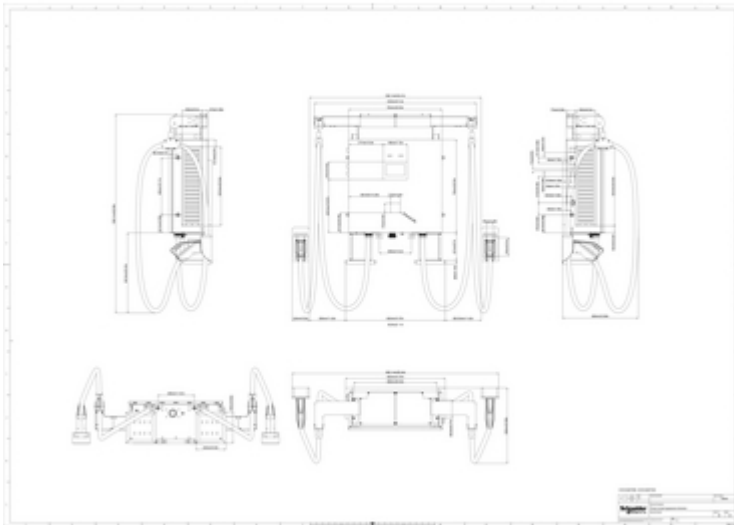


Image of product in real life situation

